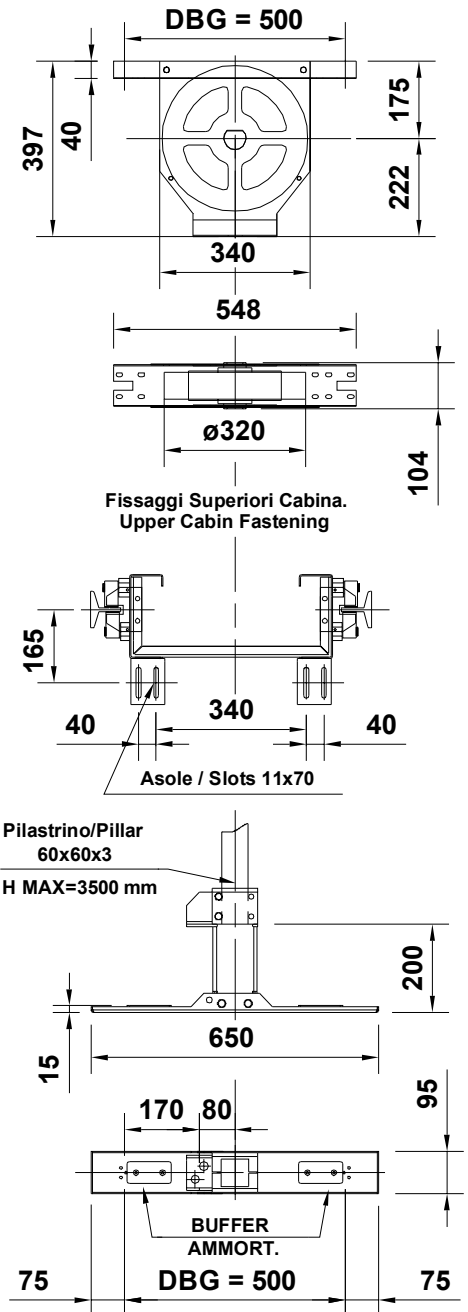
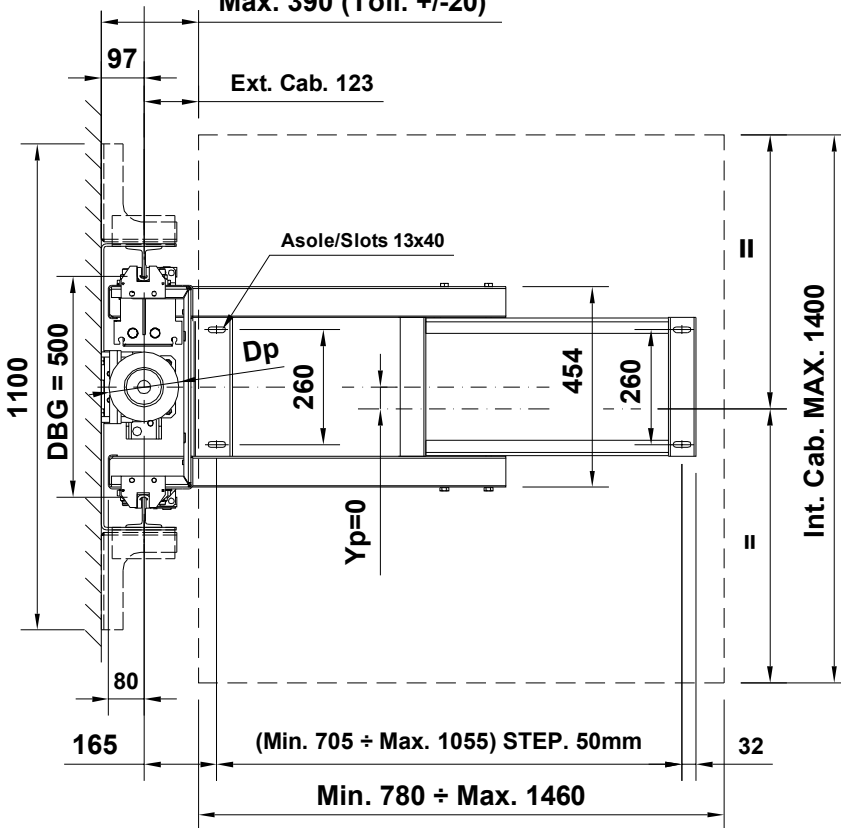


Min. 220 (Toll. 0/+20)
 Max. 390 (Toll. +/-20)



CARATTERISTICHE TECNICHE TECHNICAL DATA(*)		
CARICHI LOADS	Peso Cabina Max. / Car Weight (Pc)	260 Kg
	Massa Arcata / Car Frame Weight (Pa)	90 Kg
	Portata Nominale / Useful load (Q)	300 Kg
	Tiro Funi Max./Max Draught Ropes (Pa+Pc+Q)	650 Kg
	Pc + Q Max	560 Kg
	Massa Arcatina / Pulley Assembly Weight	23 Kg
Velocità Max. (con blocchi a presa Istantanea) Max Speed (with instantaneous safety gear)		0,15 m/s
Tipo Guide / Guide Type	82/68/9 - 70/70/9 - 70/65/9 - 89/62/16	
Nr. Funi (Diametro e Tipo) (*) Nr. Ropes (Diameter and Type) (*)	N°2 (ø8) 6X19S+FC (R1770)	
Diametro Puleggia / Pulley Diameter	ø 320	
Pattino tipo / Guide shoe type	a striscio	
Diametro Max. Pistone "Dp" / Max Ram Diameter "Dp"	ø 158	
Profondità fossa Min./Min Pit Depth (fondo/floor 30mm)	150 mm	
(*) in accordo con / according		DIR.MACC 2006/42/CE

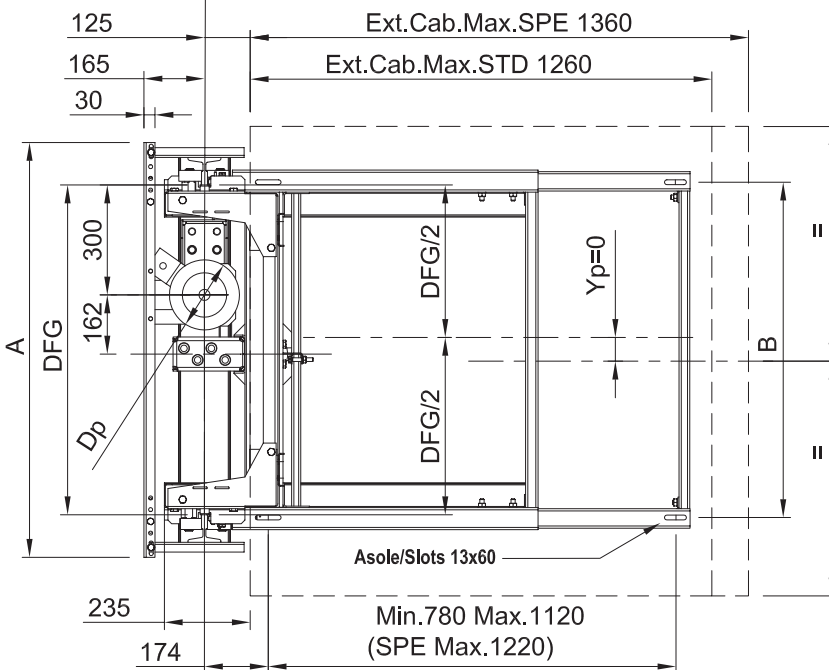
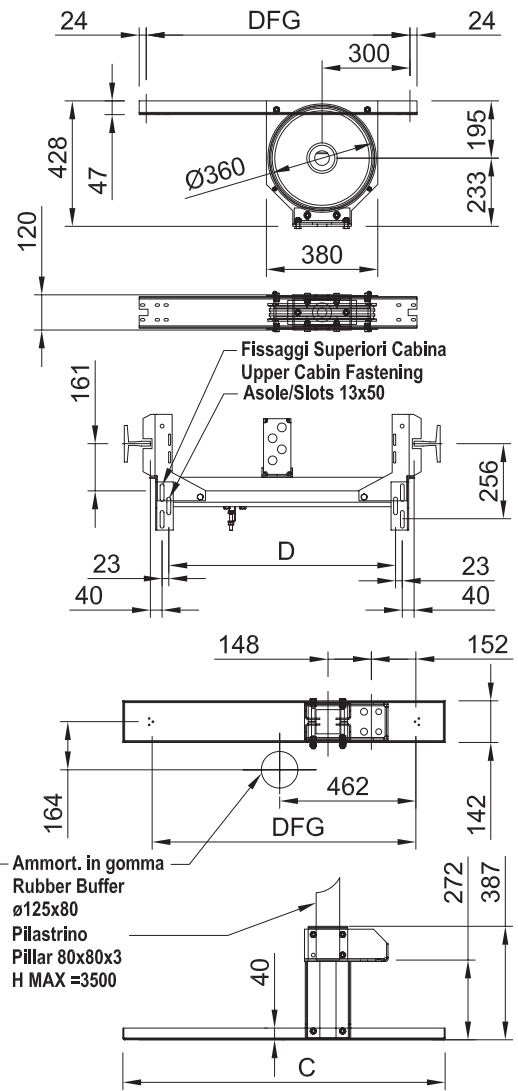
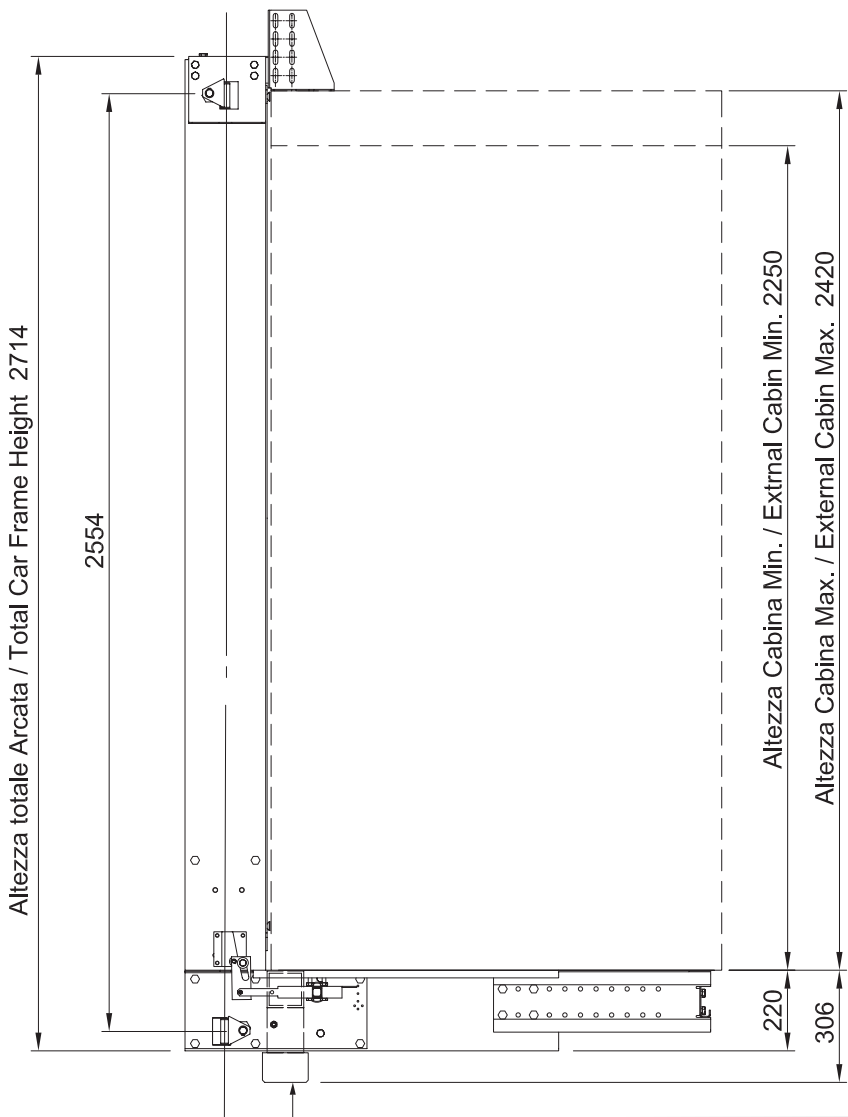
ARCATA 501 R 2:1
CARFRAME 501 R 2:1

Soggetto a modifica senza preavviso / Subject to change without notice

PAGE	1
DATE	15/02/2012
DOC. Nr.	T4ATT001
EDITION	1.0

TECHNOLETT S.r.l.

LAVIS - TRENTO



CARATTERISTICHE TECNICHE TECHNICAL DATA		
CARICHI LOADS	Peso Cabina Max. / Car Weight (Pc)	474 Kg
	Massa Arcata / Car Frame Weight (Pa)	146 Kg
	Portata Nominale / Useful load (Q)	630 Kg
	Tiro Funi Max./Max Draught Ropes (Pa+Pc+Q)	1250 Kg
	Pc + Q Max	1104 Kg
	Massa Arcatina / Pulley Assembly Weight	34 Kg
Velocità Max. (con Blocchi a presa Istantanea) Max Speed (with instantaneous Safety Gear)		0,63 m/s
Velocità Max. (con Blocchi a presa Progressiva) Max Speed (with progressive Safety Gear)	(*)	1 m/s
Tipo Guide STD Guide Type STD	T125/82/16 - T125/68/9 - T90/75/16 T89/62/16 - T82/68/9	
ALTRI TIPI A RICHIESTA / OTHER TYPES ON REQUEST		
Numero funi e diametro Number of Ropes and diameter		N°4 - ø9
Diametro Puleggia / Pulley Diameter		ø 360
Pattino tipo / Guide shoe type		a striscio
Ruote a richiesta / Bearings Rollers optional		ø 80
Diametro Max. Pistone "Dp" / Max Ram Diameter "Dp"		ø 195
Fossa Tecnica Min con disp. di sicurezza (fondo sp.80mm) Min Technical Pit with safety pillar device (car floor th. 80mm)		500 mm
Fossa a normativa a EN 81.2 (fondo sp.80mm) Pit EN 81.2 (car floor th.80mm)		1100 mm

DFG	A	B	C	D
800	1032	815	1000	674
900	1132	915	1100	774

(*) Con blocchi Presa progressiva utilizzare solo guide trafilate oliate e lavorate oliate
Use only cold-drawn oiled and machined oiled Guide Rails in case of Progressive safety gear

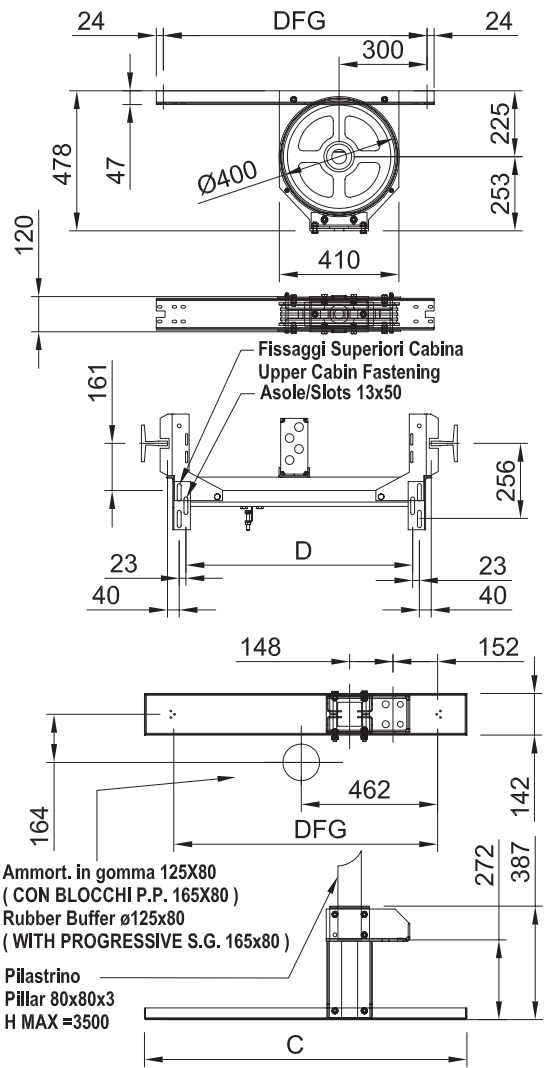
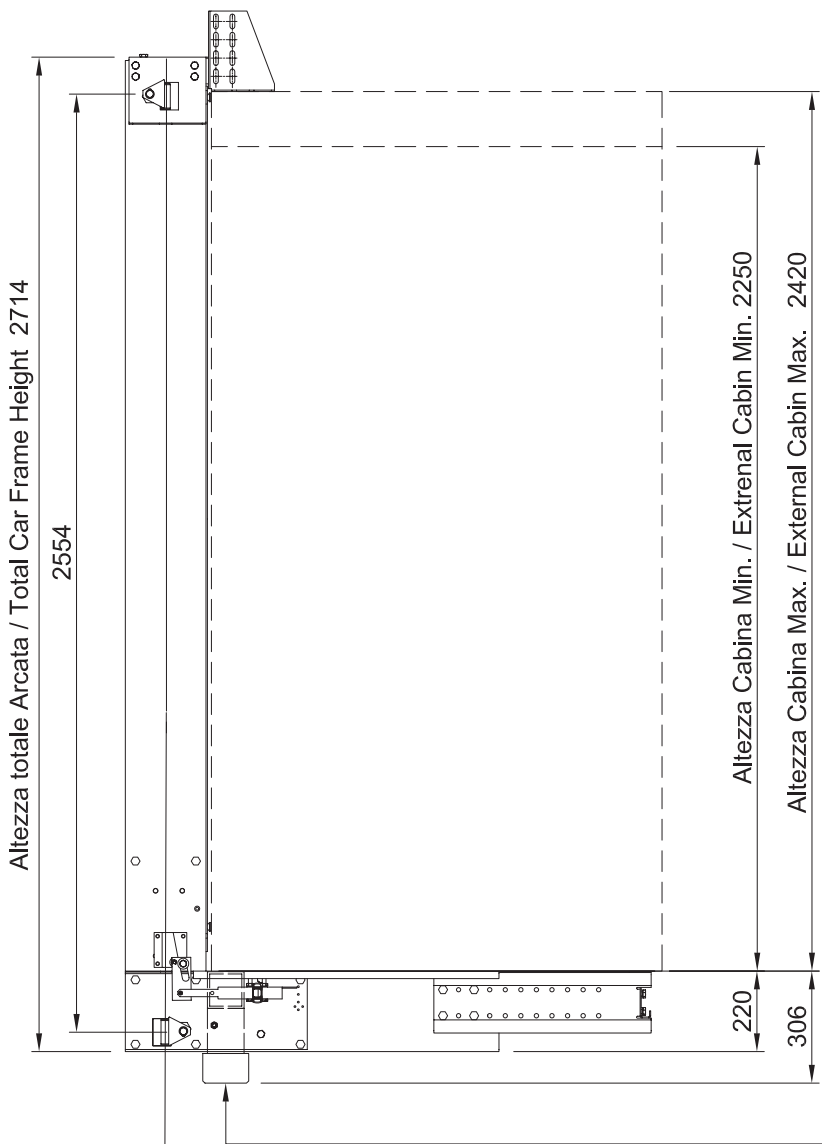
ARCATA 6305 2:1 CARFRAME 6305 2:1

Soggetto a modifica senza preavviso / Subject to change without notice

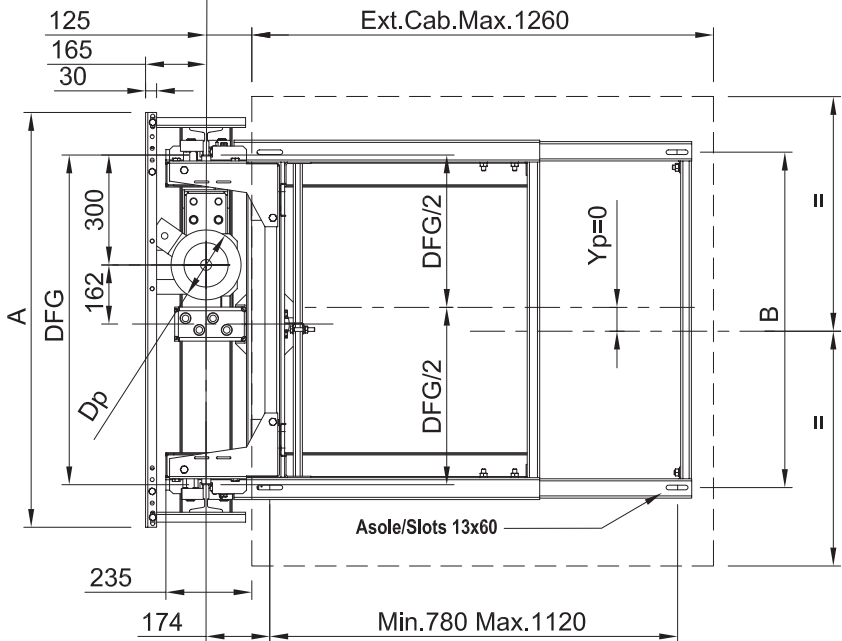
PAGE	1
DATE	06/06/08
DOC. Nr.	T6AUN003
EDITION	11.0

TECHNOLETT S.r.l.

LAVIS - TRENTO



Ammort. in gomma 125X80
(CON BLOCCHI P.P. 165X80)
Rubber Buffer ø125x80
(WITH PROGRESSIVE S.G. 165x80)
Pilastrino
Pillar 80x80x3
H MAX =3500



DFG	A	B	C	D
800	1032	815	1000	674
900	1132	915	1100	774

(*) Con blocchi Presa progressiva utilizzare solo guide trafilate oliate e lavorate oliate
Use only cold-drawn oiled and machined oiled Guide Rails in case of Progressive safety gear

CARATTERISTICHE TECNICHE TECHNICAL DATA

CARICHI LOADS	Peso Cabina Max. / Car Weight (Pc)	724 Kg
	Massa Arcata / Car Frame Weight (Pa)	146 Kg
	Portata Nominale / Useful load (Q)	630 Kg
	Tiro Funi Max./Max Draught Ropes (Pa+Pc+Q)	1500 Kg
	Pc + Q Max	1354 Kg
	Massa Arcatina / Pulley Assembly Weight	40 Kg
Velocità Max. (conBlocchi a presa Istantanea) Max Speed (with instantaneous Safety Gear)		0,63 m/s
Velocità Max. (con Blocchi a presa Progressiva) Max Speed (with progressive Safety Gear)		(*) 1 m/s
Tipo Guide STD Guide Type STD	T125/82/16 - T125/68/9 - T90/75/16 T89/62/16 - T82/68/9	
ALTRI TIPI A RICHIESTA / OTHER TYPES ON REQUEST		
Numero funi e diametro Number of Ropes and diameter		N°4 - ø10
Diametro Puleggia / Pulley Diameter		ø 400
Pattino tipo / Guide shoe type		a striscio
Ruote a richiesta / Bearings Rollers optional		ø 80
Diametro Max. Pistone "Dp" / Max Ram Diameter "Dp"		ø 195
Fossa Tecnica Min con disp. di sicurezza (fondo sp.80mm) Min Technical Pit with safety pillar device (car floor th. 80mm)		500 mm
Fossa a normativa a EN 81.2 (fondo sp.80mm) Pit EN 81.2 (car floor th.80mm)		1100 mm

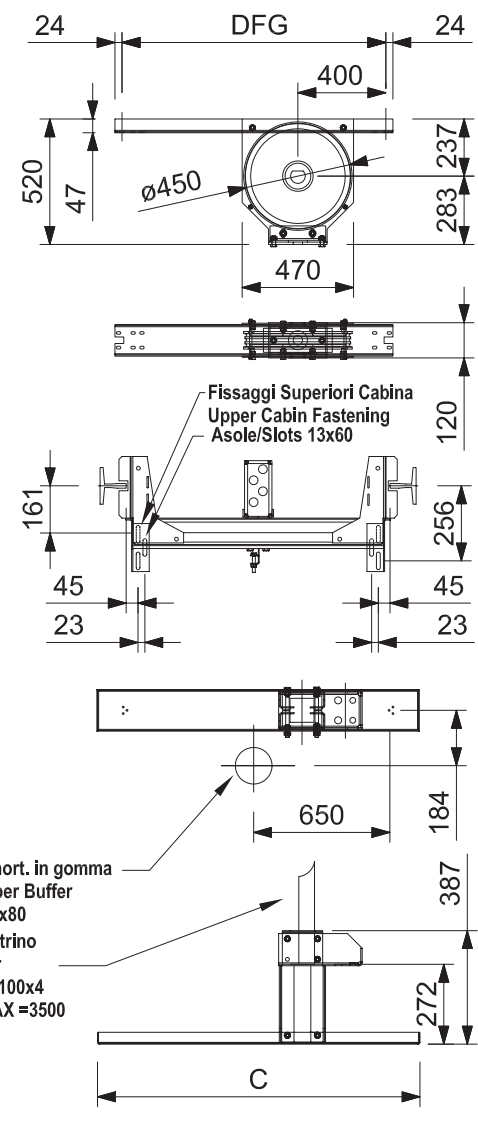
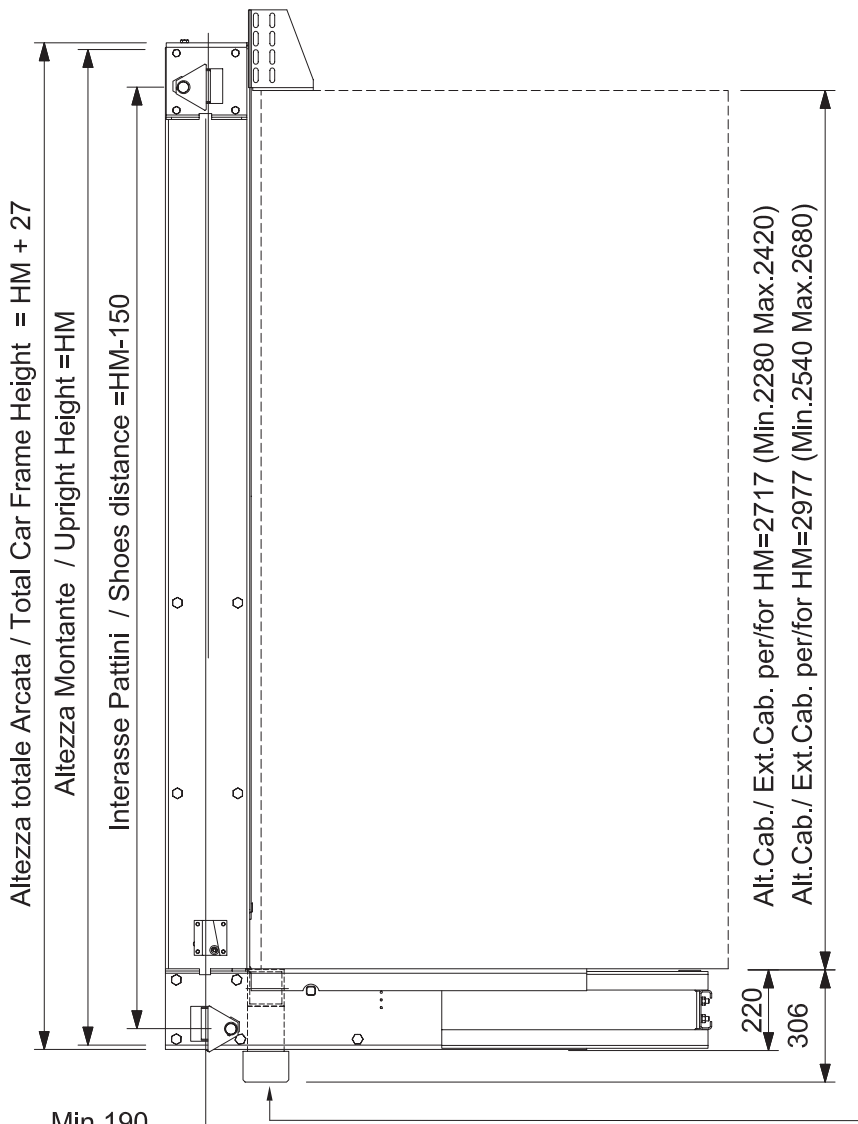
**ARCATA 6305R 2:1
CARFRAME 6305R 2:1**

Soggetto a modifica senza preavviso / Subject to change without notice

PAGE	1
DATE	08/07/09
DOC. Nr.	T6AUN004
EDITION	13.0

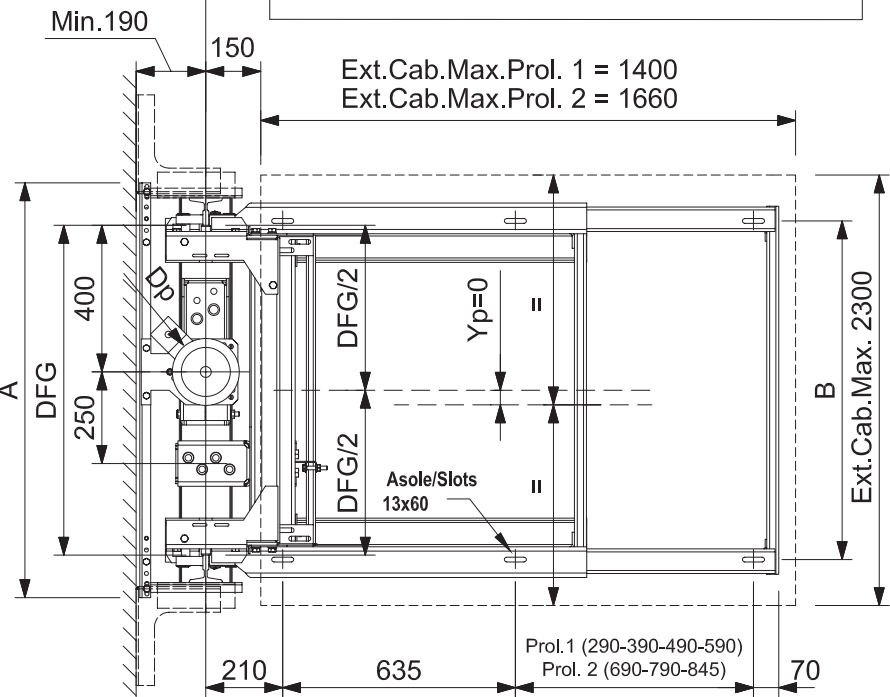
TECHNOLEFT S.r.l.

LAVIS - TRENTO



HM
2717
2977

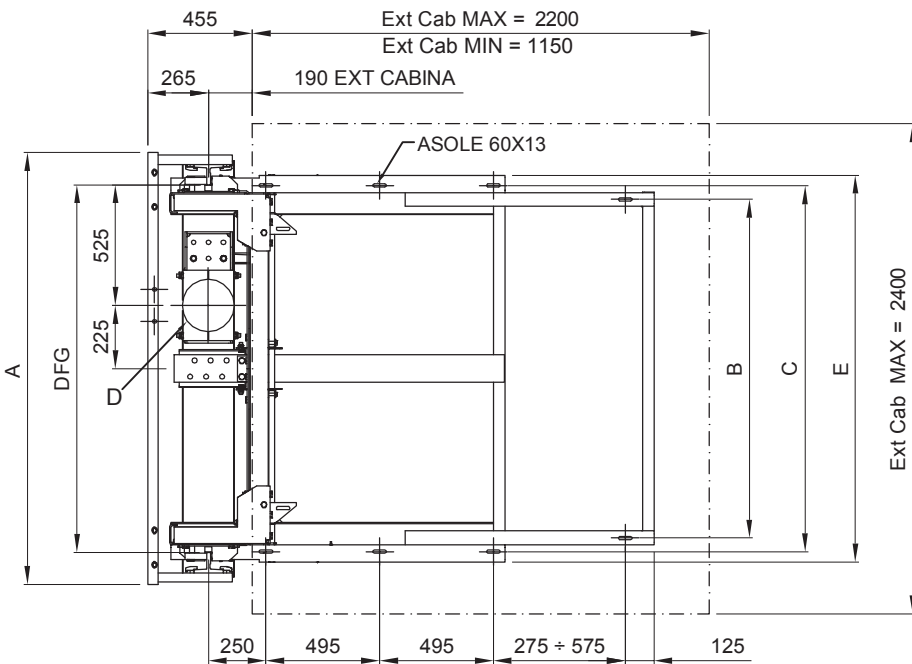
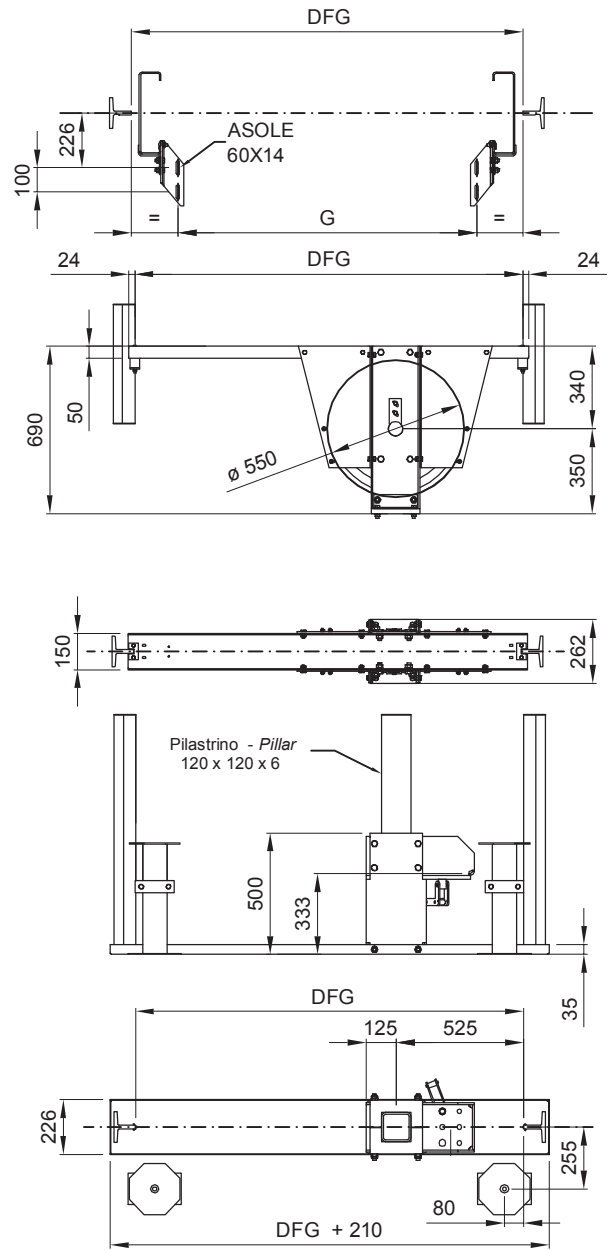
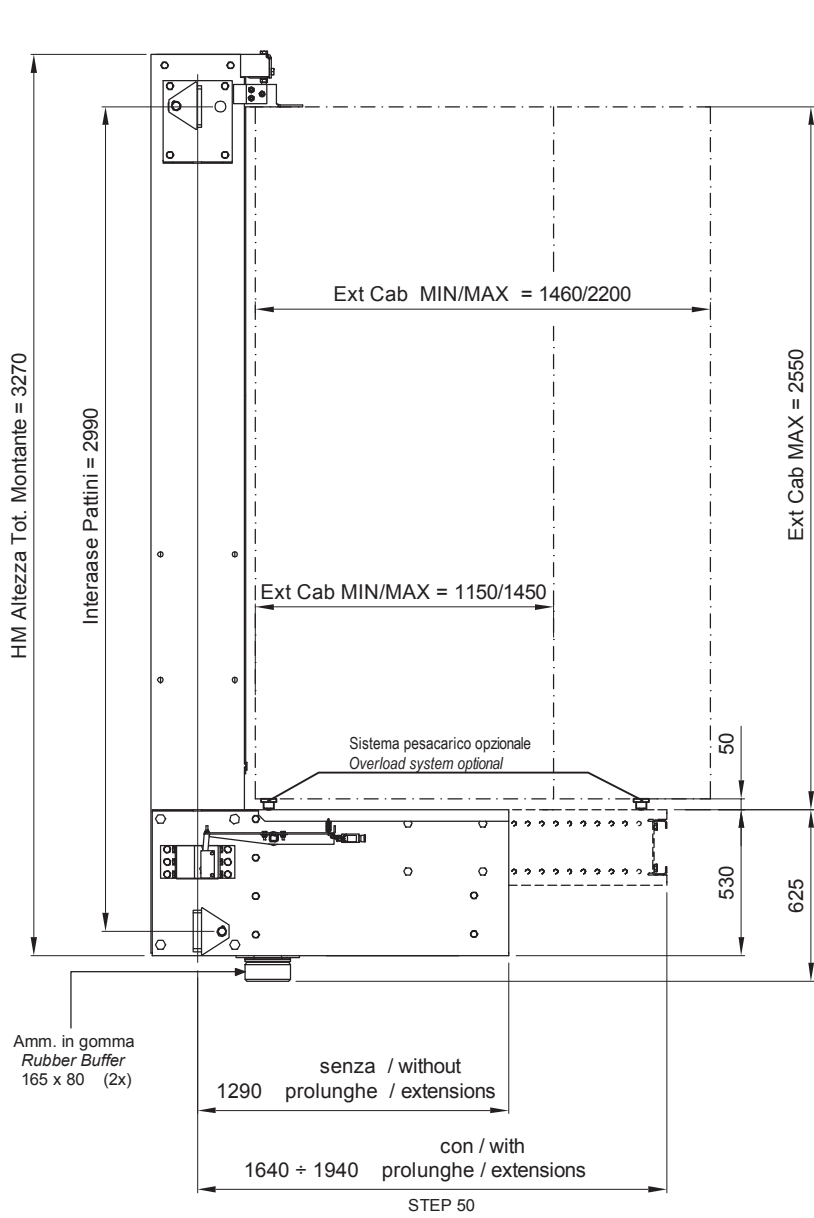
Ammort. in gomma
Rubber Buffer
ø165x80
Pilastrino
Pillar
100x100x4
H MAX = 3500



DFG	A	B	C
900	1132	924	1100
1100	1332	1124	1300
1300	1532	1324	1500

(*) Con blocchi Presa progressiva utilizzare solo guide trafilete oliate e lavorate oliate
Use only cold-drawn oiled and machined oiled Guide Rails in case of Progressive safety gear

CARATTERISTICHE TECNICHE TECHNICAL DATA	
CARICHI LOADS	Peso Cabina Max. / Car Weight (Pc) 695 Kg
	Massa Arcata / Car Frame Weight (Pa) 260 Kg
	Portata Nominale / Useful load (Q) 1000 Kg
	Tiro Funi Max./Max Draught Ropes (Pa+Pc+Q) 1955 Kg
	Pc + Q Max 1695 Kg
	Massa Arcatina / Pulley Assembly Weight 65 Kg
Velocità Max. (con Blocchi a presa Istantanea) / Max Speed (with instantaneous Safety Gear) 0,63 m/s	
Velocità Max. (con Blocchi a presa Progressiva) / Max Speed (with progressive Safety Gear) (*) 1 m/s	
Tipo Guide STD T127/89/16 - T125/82/16	
Guide Type STD T125/68/9 - T90/75/16 - T89/62/16	
ALTRI TIPI A RICHIESTA / OTHER TYPES ON REQUEST	
Numero funi e diametro / Number of Ropes and diameter N°4 - ø11	
Diametro Puleggia / Pulley Diameter ø 450	
Pattino tipo / Guide shoe type a striscio	
Ruote a richiesta / Bearings Rollers optional ø 125	
Diametro Max. Pistone "Dp" / Max Ram Diameter "Dp" ø 217	
Fossa Tecnica Min (fondo sp.80mm) / Min Technical Pit (car floor th. 80mm) 500 mm	
Fossa a normativa a EN 81.2 (fondo sp.80mm) / Pit EN 81.2 (car floor th.80mm) 1100 mm	



CARATTERISTICHE TECNICHE / TECHNICAL DATA	
CARICHI LOADS	Peso Cabina Max. / Car Weight (Pc) 1470 Kg
	Massa Arcata / Car Frame Weight (Pa)* Vedi Sotto / See below
	Portata Nominale / Useful load (Q) 1500 Kg
	Tiro Funi Max. / Max Dr. Ropes (Pa+Pc+Q) 3500 Kg
Velocità Max. / Max Speed (con blocchi a presa istantanea / with instantaneous safety gear) 0,63 m/s	
Tipo Guida Arcata / Carframe Guide Type T127/89/16 ----T125/82/16	
Massa Arcatina / Pulley Assembly Weight 113 Kg	
Nr. Funi(diametro) / Nr. Ropes(diameter) N°6 ø13	
Pattino tipo / Guide shoe type a striscio in polizene	
Ruote / Bearings rollers Optional ø150	
Diametro Pistone Max "D" / Max Ram Diameter "D" ø282	
Diametro Puleggia / Pulley Diameter ø550	
DFG A B C E G (Pa) *	
1400 1680 1275 1395 1485 1017 472 Kg *	
1600 1880 1475 1595 1685 1217 487 Kg *	
Peso prolunghe / Extensions Weight (2x) 57 Kg	
* Il peso (Pa) si intende senza prolunghe / The weight (Pa) it's without extensions	
Fossa Tecnica Min (fondo = 100mm Etracorsa = 100mm) 770 mm	
Min Technical Pit (car floor = 100mm Etravel = 100mm)	
Fossa Min EN 81.2 (fondo = 100mm Etracorsa = 100mm) 1230 mm	
Min Pit EN 81.2 (car floor = 100mm Etravel = 100mm)	

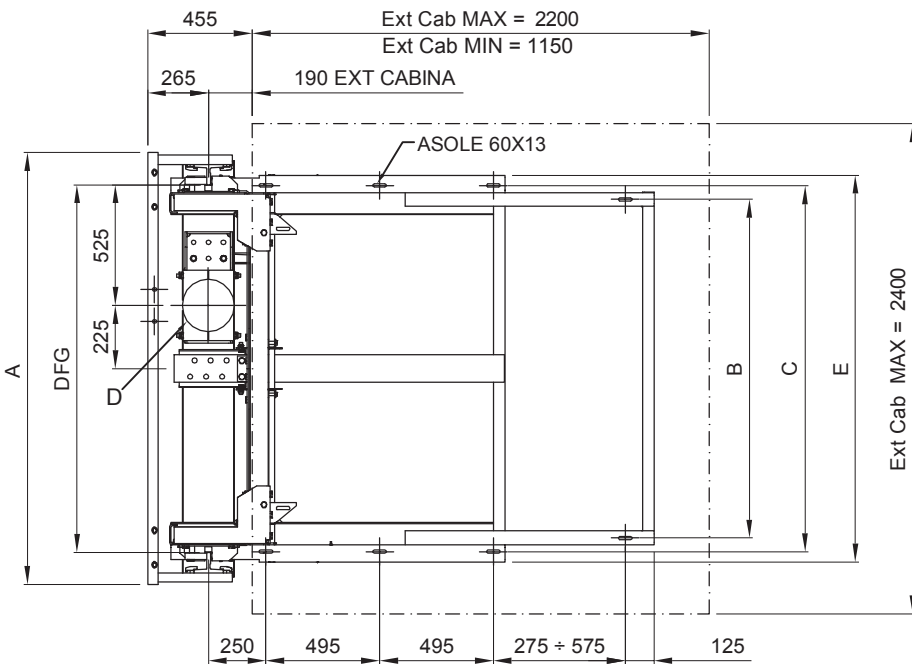
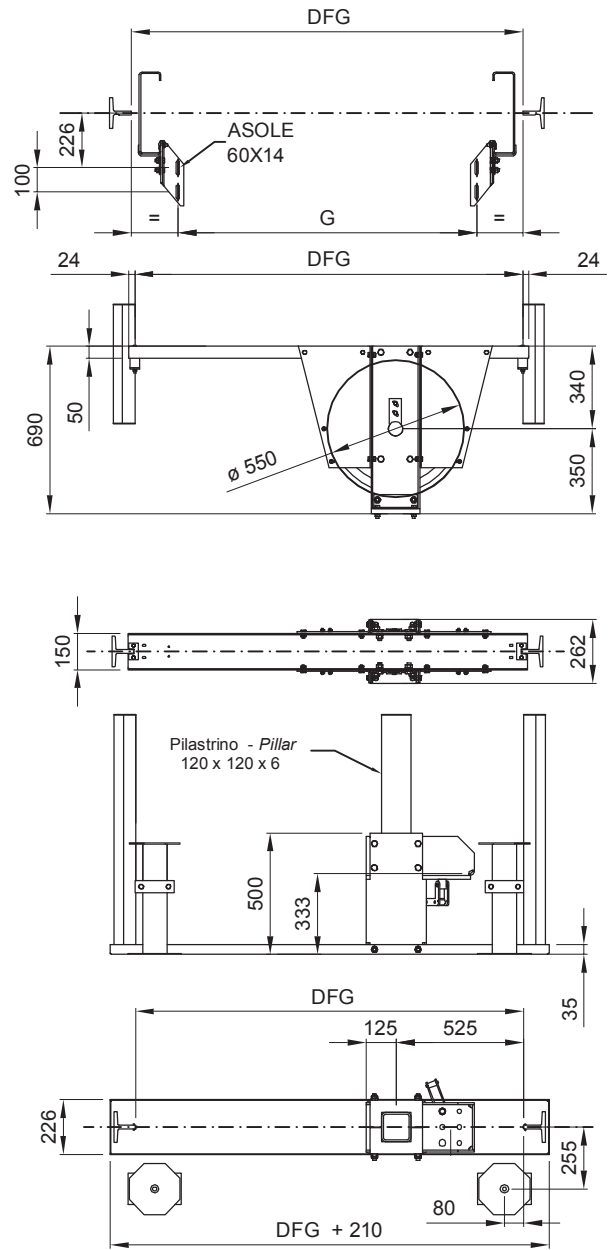
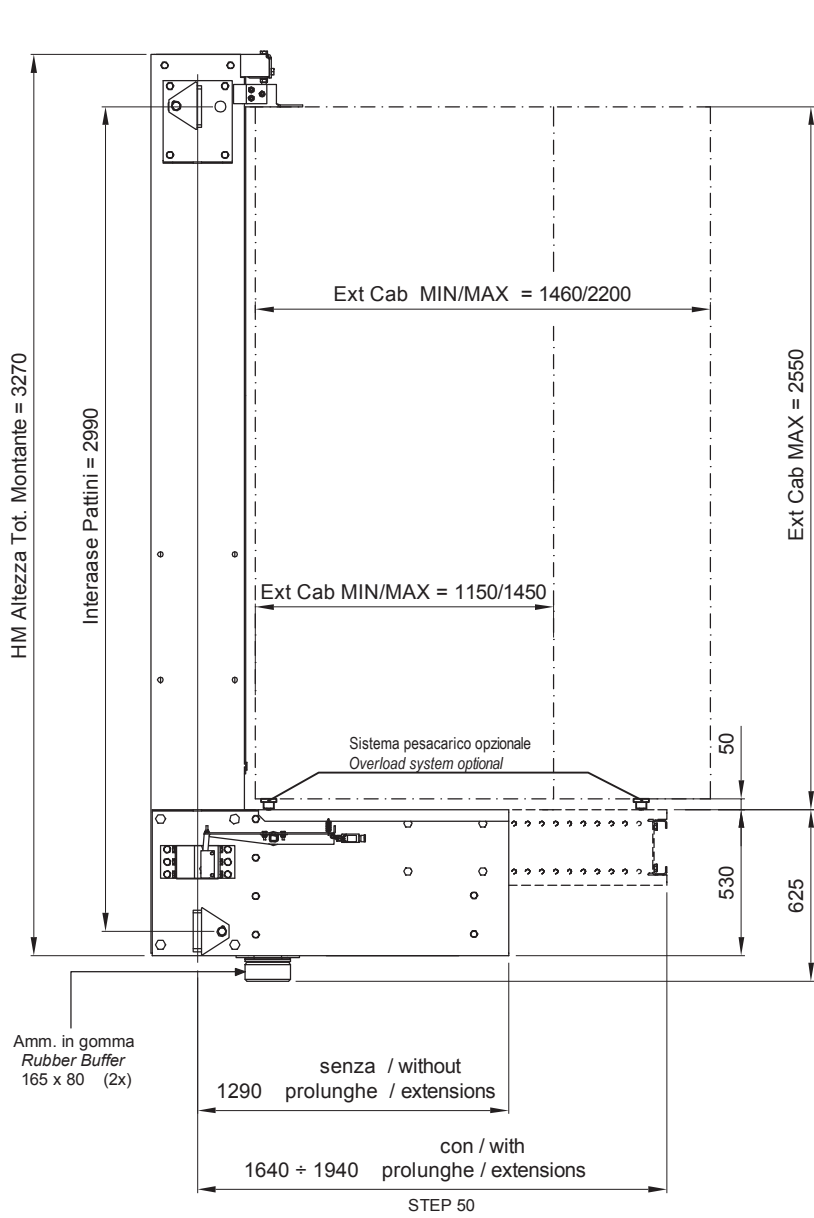
ARCATA 1511 OLEO 2:1 CARFRAME 1511 OLEO 2:1

Soggetto a modifica senza preavviso / Subject to change without notice

PAGE	1
DATE	20/09/2011
DOC. Nr.	T6ADF001
EDITION	0.0

TECHNO LIFT S.r.l.

LAVIS - TRENTO



CARATTERISTICHE TECNICHE / TECHNICAL DATA	
CARICHI LOADS	Peso Cabina Max. / Car Weight (Pc) 1410 Kg
	Massa Arcata / Car Frame Weight (Pa)* Vedi Sotto / See below
	Portata Nominale / Useful load (Q) 2000 Kg
	Tiro Funi Max. / Max Dr. Ropes (Pa+Pc+Q) 4000 Kg
Velocità Max. / Max Speed (con blocchi a presa istantanea / with instantaneous safety gear)	0,63 m/s
Tipo Guida Arcata / Carframe Guide Type	T127/89/16 ----T125/82/16
Massa Arcatina / Pulley Assembly Weight	122 Kg
Nr. Funi(diametro) / Nr. Ropes(diameter)	N°6 ø13
Pattino tipo / Guide shoe type	a striscio in polizene
Ruote / Bearings rollers	Optional ø150
Diametro Pistone Max "D" / Max Ram Diameter "D"	ø282
Diametro Puleggia / Pulley Diameter	ø550
DFG	A B C E G (Pa) *
1400	1680 1275 1395 1485 1017 534 Kg *
1600	1880 1475 1595 1685 1217 549 Kg *
Peso prolunghe / Extensions Weight (2x)	57 Kg
* Il peso (Pa) si intende senza prolunghe / The weight (Pa) it's without extensions	
Fossa Tecnica Min (fondo = 100mm Etracorsa = 100mm)	770 mm
Min Technical Pit (car floor = 100mm Etratravel = 100mm)	
Fossa Min EN 81.2 (fondo = 100mm Etracorsa = 100mm)	1230 mm
Min Pit EN 81.2 (car floor = 100mm Etratravel = 100mm)	

ARCATA 2011 OLEO 2:1 CARFRAME 2011 OLEO 2:1

Soggetto a modifica senza preavviso / Subject to change without notice

PAGE	1
DATE	20/09/2011
DOC. Nr.	T6ADF002
EDITION	0.0

TECHNO LIFT S.r.l.

LAVIS - TRENTO