

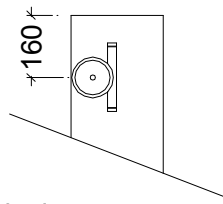
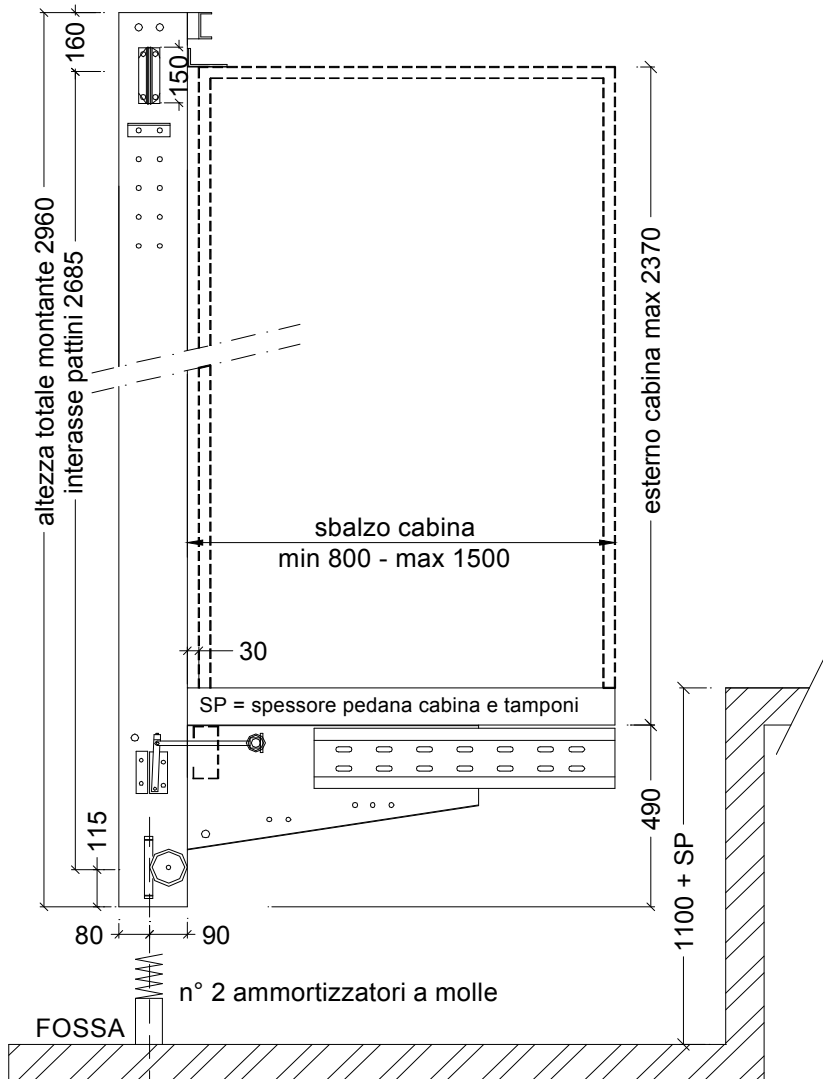
C.M.A.® srl

Costruzioni montacarichi e ascensori
 S.P. 238 Km 16+610 (ex Via Gravina)
 70033 Corato (BA) - C.P.C. n° 141
 P.IVA 05637380725

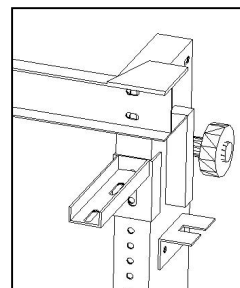
Tel. 080 35 88 714 - 080 35 93 018
 Fax 080 872 91 13
 www.ascensoricma.it
 E-mail: info@ascensoricma.it

SCHEDA TECNICA ARCATA IDRAULICA IN TAGLIA

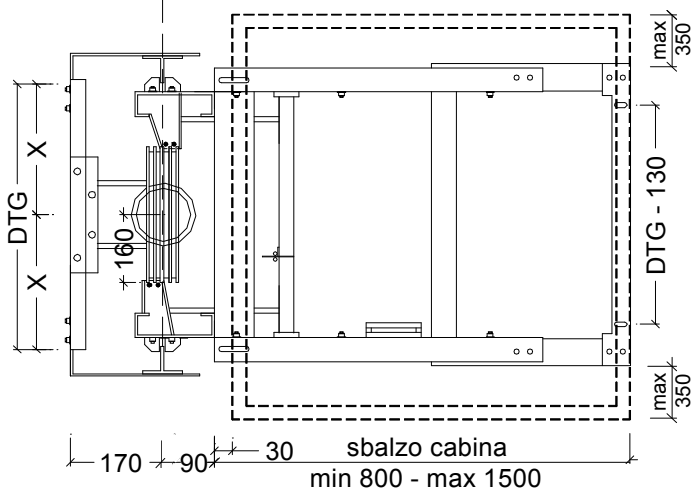
MODELLO 2000



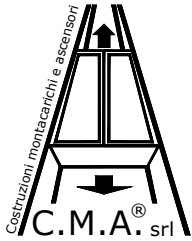
Particolare montante con rullo opzionale



Particolare staffa blocco tetto cabina



DATI TECNICI ARCATA 2000 CMA®			
DTG	550	650	mm
X	275	325	mm
N° FUNI	4		
FUNI	Ø 8 6 x (9+9+1) S114		
PESO ARCATA	151	154	Kg
PESO ARCATINA	35	36	Kg



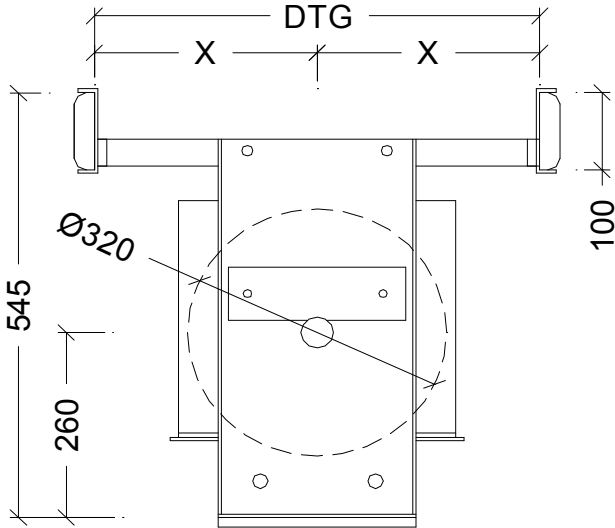
C.M.A.® srl

Costruzioni montacarichi e ascensori
S.P. 238 Km 16+610 (ex Via Gravina)
70033 Corato (BA) - C.P.C n° 141
P.IVA 05637380725

Tel. 080 35 88 714 - 080 35 93 018
Fax 080 872 91 13
www.ascensoricma.it
E-mail: info@ascensoricma.it

SCHEDA TECNICA ARCATATA IDRAULICA IN TAGLIA

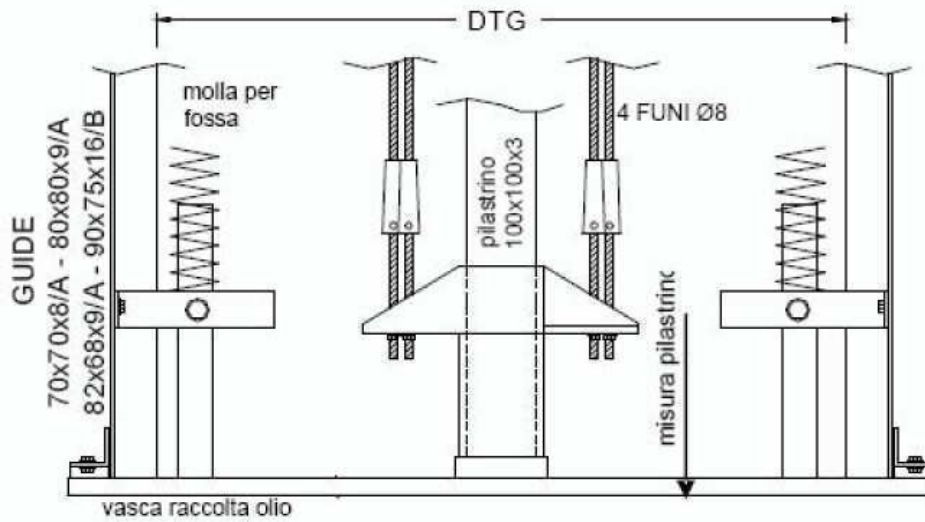
MODELLO 2000



ARCATINA CMA®			
DTG	550	650	mm
X	275	325	mm
N° GOLE	4		
Ø PULEGGIA	320 rot. inv.	mm	
PESO ARCATINA	35	36	Kg

PARTICOLARE TRAVE DI BASE

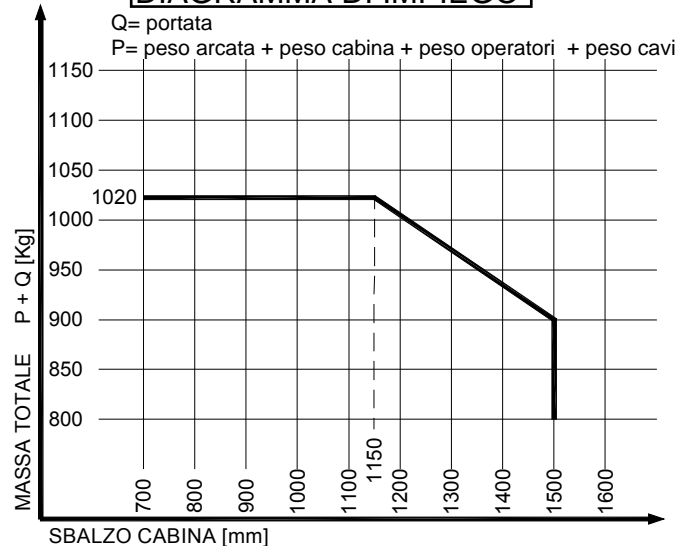
NB: La lunghezza del pilastrino è misurata dalla vasca raccolta olio

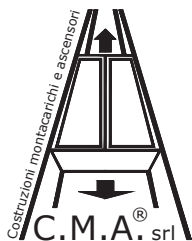


TRAVE DI BASE		
PILASTRINO	100x100x3	mm
Ø PISTONE	max 100	mm
TRAVE DI BASE	HEB 120	

MOLLA PER FOSSA		
MISURE DexHxdf [mm]	89x210x15	92x225x16
N° MOLLE	2	2
CARICO Q+P MIN [daN]	582	752
CARICO Q+P MAX [daN]	932	1204
VELOCITA' MAX [m/s]	0,74	
Per velocità superiori contattare Ufficio tecnico CMA		

DIAGRAMMA DI IMPIEGO





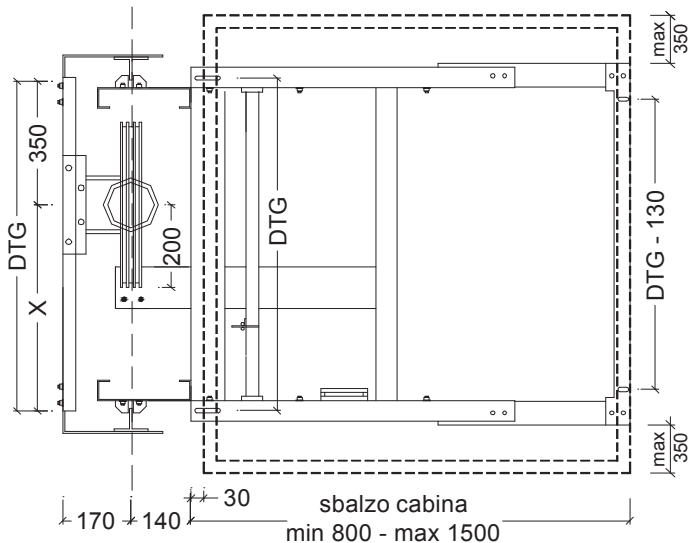
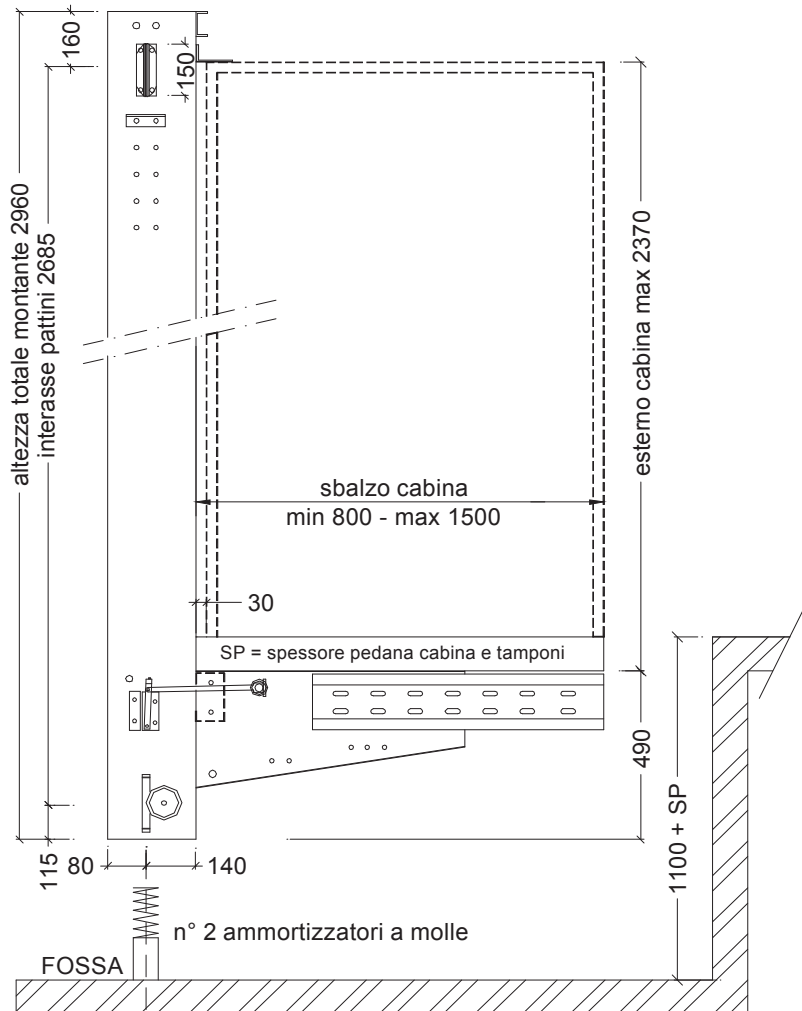
C.M.A.® srl

Costruzioni montacarichi e ascensori
 S.P. 238 Km 16+610 (ex Via Gravina)
 70033 Corato (BA) - C.P.C. n° 141
 P.IVA 05637380725

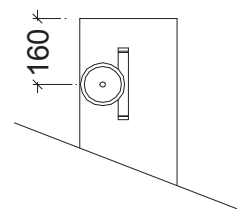
Tel. 080 35 88 714 - 080 35 93 018
 Fax 080 872 91 13
 www.ascensoricma.it
 E-mail: info@ascensoricma.it

SCHEDA TECNICA ARCATA IDRAULICA IN TAGLIA

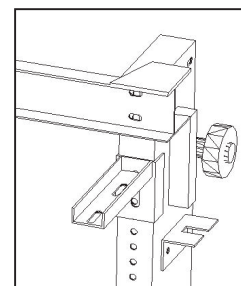
MODELLO 2001 - 2002



Variante rinforzata per sbalzi cabina superiori a 1250 mm.



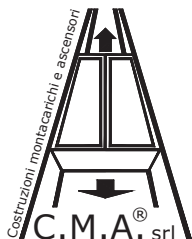
Particolare montante con rullo opzionale



Particolare staffa blocco tetto cabina

DATI TECNICI ARCATA 2001 - 2002 CMA®					
DTG	700	800	950	1100	mm
X	350	450	600	750	mm
PESO ARCATA	173	178	186	193	Kg
PESO ARCATINA	39	41	43	45	Kg

VARIANTI ARCATA 2001 - 2002 CMA®			
CODICE	2001	2002	
N° FUNI	3	4	mm
FUNI	Ø10 6 x (9+9+1) S114		



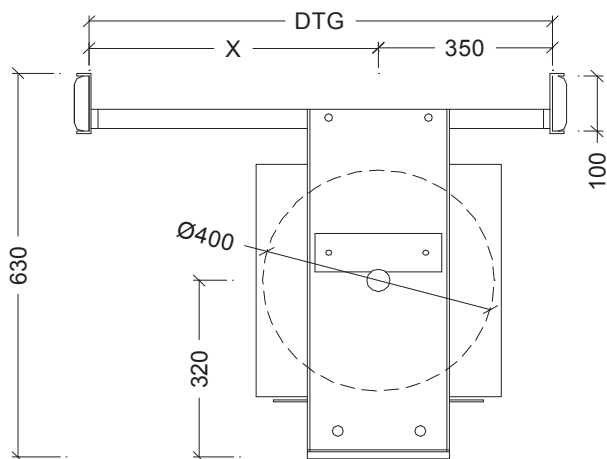
C.M.A.® srl

Costruzioni montacarichi e ascensori
 S.P. 238 Km 16+610 (ex Via Gravina)
 70033 Corato (BA) - C.P.C. N° 141
 P.IVA 05637380725

Tel. 080 35 88 714 - 080 35 93 018
 Fax 080 872 91 13
 www.ascensoricma.it
 E-mail: info@ascensoricma.it

SCHEDA TECNICA ARCATA IDRAULICA IN TAGLIA

MODELLO 2001 - 2002



PARTICOLARE TRAVE DI BASE

DATI TECNICI					
ARCATINA 2001 - 2002 CMA®					
DTG	700	800	950	1100	mm
X	350	450	600	750	mm
PESO ARCATINA	39	41	43	45	Kg

VARIANTI			
ARCATINA 2001 - 2002 CMA®			
CODICE	2001	2002	
N° FUNI	3	4	mm
FUNI	Ø10 6 x (9+9+1) S114		
Ø PULEGGIA	400		mm
N° GOLE	3	4	

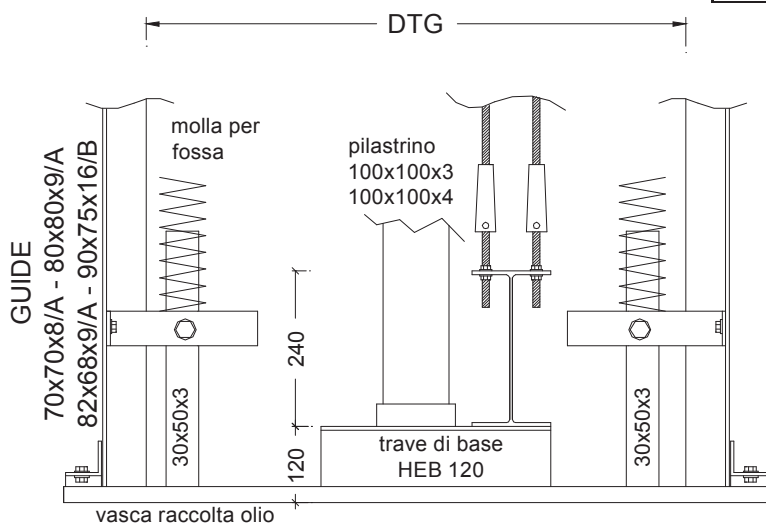
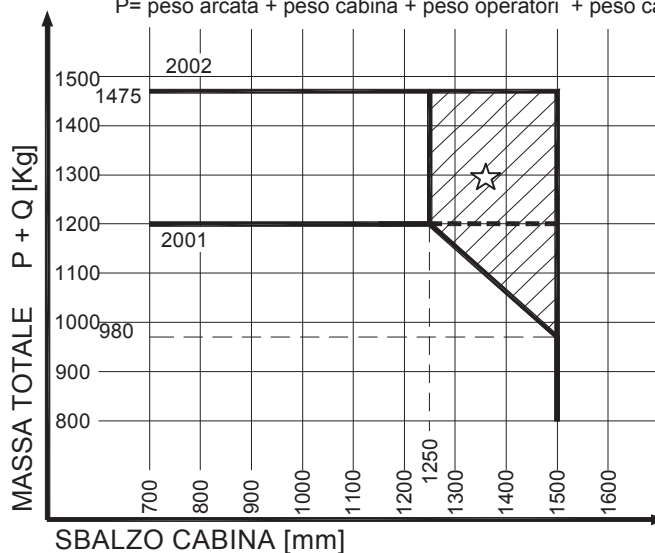


DIAGRAMMA DI IMPIEGO

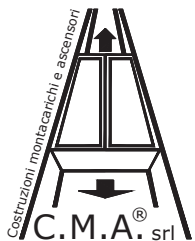
Q= portata
 P= peso arcata + peso cabina + peso operatori + peso cavi



☆ Variante rinforzata per sbalzi cabina superiori a 1250

TRAVE DI BASE			
PILASTRINO	2001	2002	
	100x100x3/4	100x100x4	mm
Ø PISTONE	max 120		mm
TRAVE DI BASE	HEB 120		

MOLLA PER FOSSA		
MISURE DexHxdf [mm]	92x225x16	98x250x18
N° MOLLE	2	2
CARICO Q+P MIN [daN]	752	926
CARICO Q+P MAX [daN]	1204	1480
VELOCITA' MAX [m/s]	0,74	
Per velocità superiori contattare Ufficio tecnico CMA		



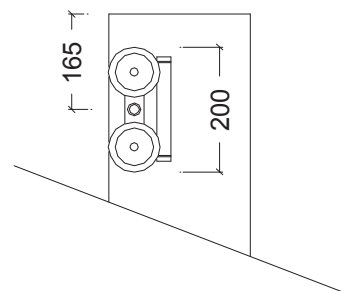
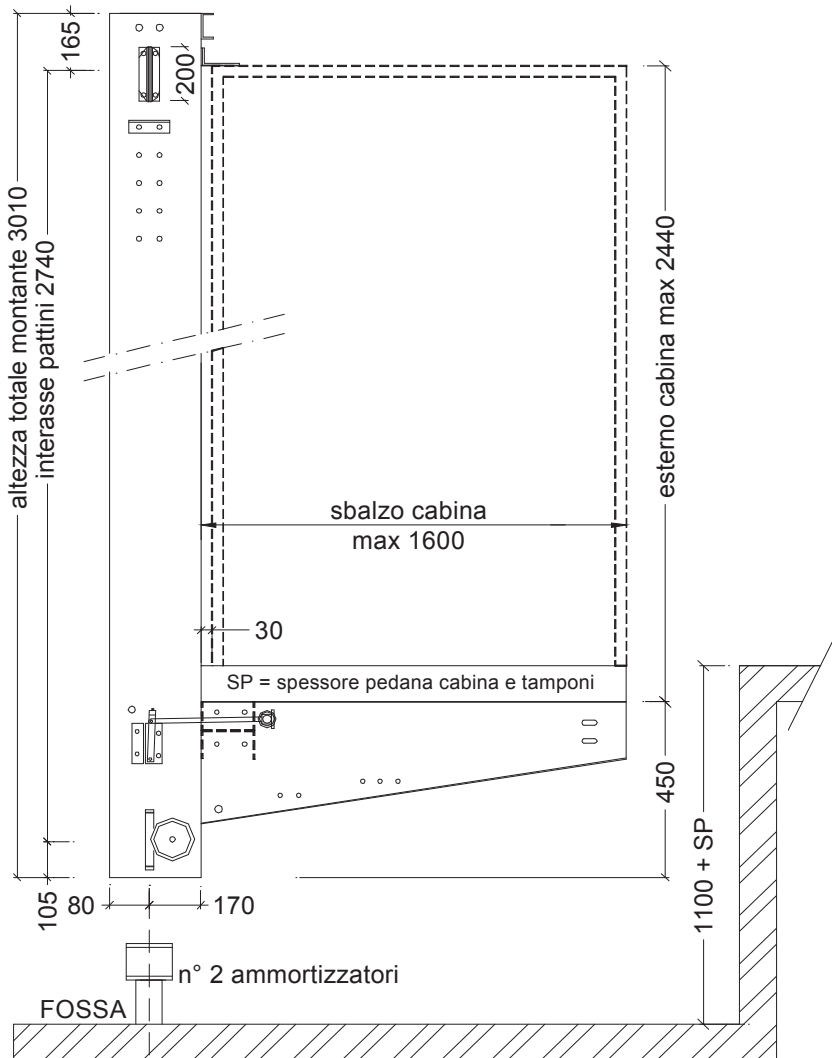
C.M.A.® srl

Costruzioni montacarichi e ascensori
 S.P. 238 Km 16+610 (ex Via Gravina)
 70033 Corato (BA) - C.P.C. n° 141
 P.IVA 05637380725

Tel. 080 35 88 714 - 080 35 93 018
 Fax 080 872 91 13
 www.ascensoricma.it
 E-mail: info@ascensoricma.it

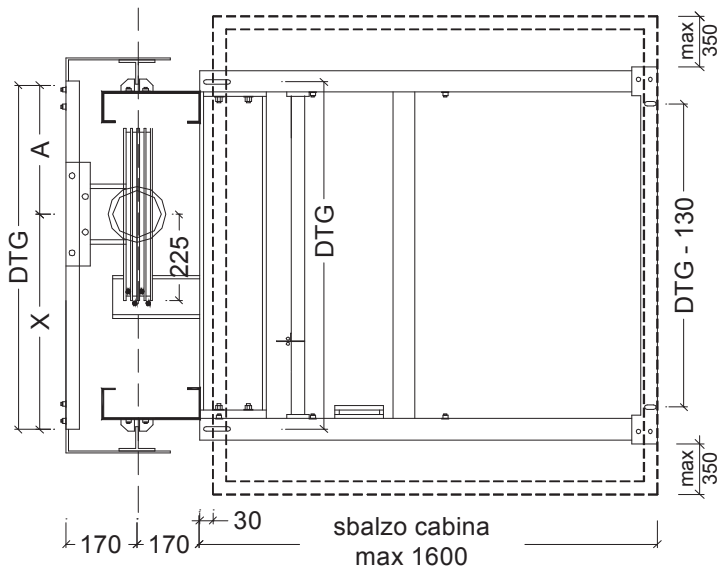
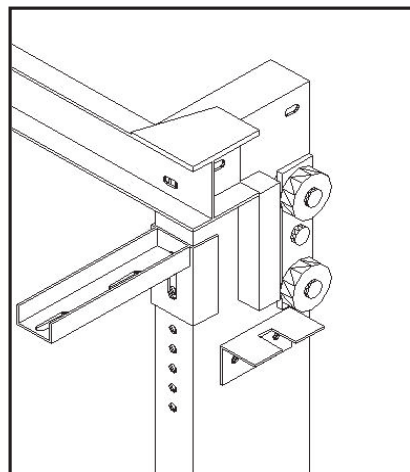
SCHEDA TECNICA ARCATA IDRAULICA IN TAGLIA

MODELLO 2003



Particolare montante con rulli opzionali

Particolare staffa blocco tetto cabina



DATI TECNICI ARCATA 2003 CMA®				
DTG	1100	1300	1500	mm
X	700	900	1000	mm
A	400	400	500	mm
N° FUNI	4			
Ø PULEGGIA	450			mm
FUNI	Ø 11 6 x (9+9+1) S114			
PESO ARCATA	235	245	255	Kg



C.M.A.® srl

Costruzioni montacarichi e ascensori
S.P. 238 Km 16+610 (ex Via Gravina)
70033 Corato (BA) - C.P.C. n° 141
P.IVA 05637380725

Tel. 080 35 88 714 - 080 35 93 018

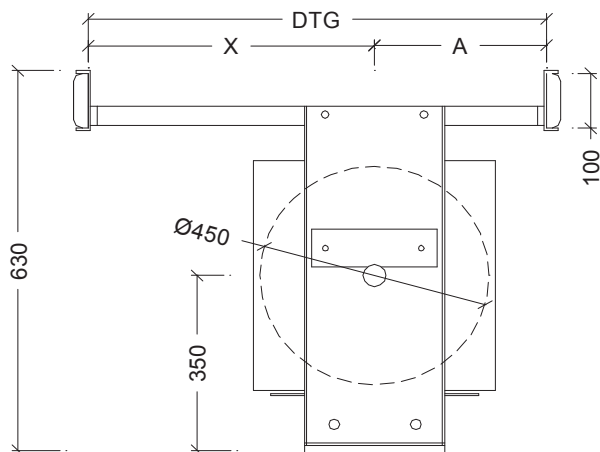
Fax 080 872 91 13

www.ascensoricma.it

E-mail: info@ascensoricma.it

SCHEDA TECNICA ARCATATA IDRAULICA IN TAGLIA

MODELLO 2003



ARCATINA CMA®				
DTG	1100	1300	1500	mm
X	700	900	1000	mm
A	400	400	500	mm
N° GOLE	4			
Ø PULEGGIA	450			mm
PESO ARCATINA	48	50	52	Kg

PARTICOLARE TRAVE DI BASE

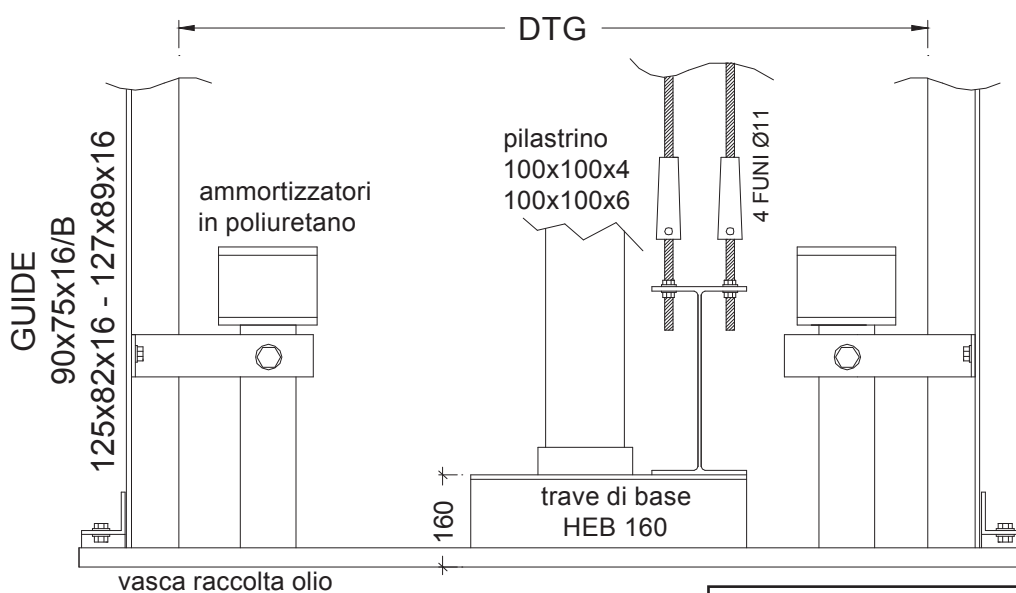
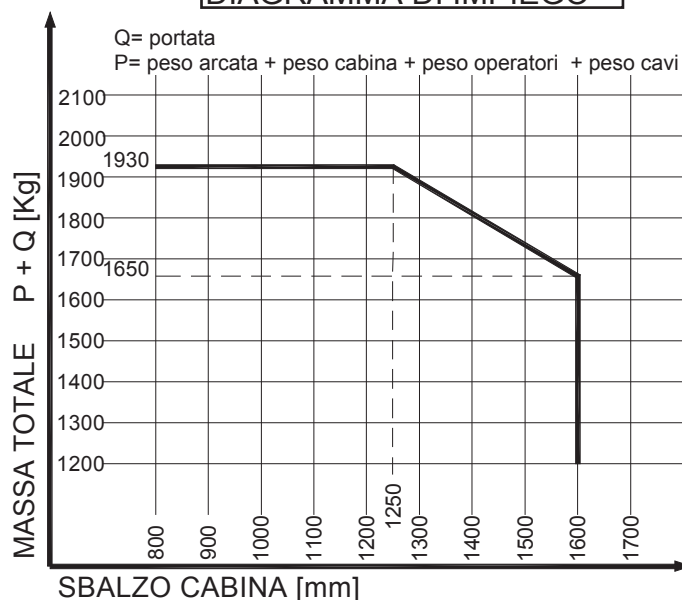
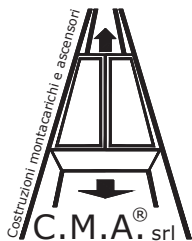


DIAGRAMMA DI IMPIEGO



TRAVE DI BASE		
PILASTRINO	100x100x4 - 100x100x6	mm
Ø PISTONE	max 120	mm
TRAVE DI BASE	HEB 120	

AMMORTIZZATORI PER FOSSA	
MISURE dxh [mm]	100x80
TIPO	POLIURETANO - mod.T2
N° AMMORTIZZATORI	2
CARICO Q+P MIN [daN]	470
CARICO Q+P MAX [daN]	2280
VELOCITA' MAX [m/s]	0,70
Per velocità superiori contattare Ufficio tecnico CMA	



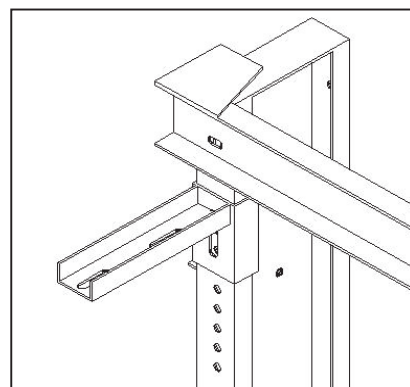
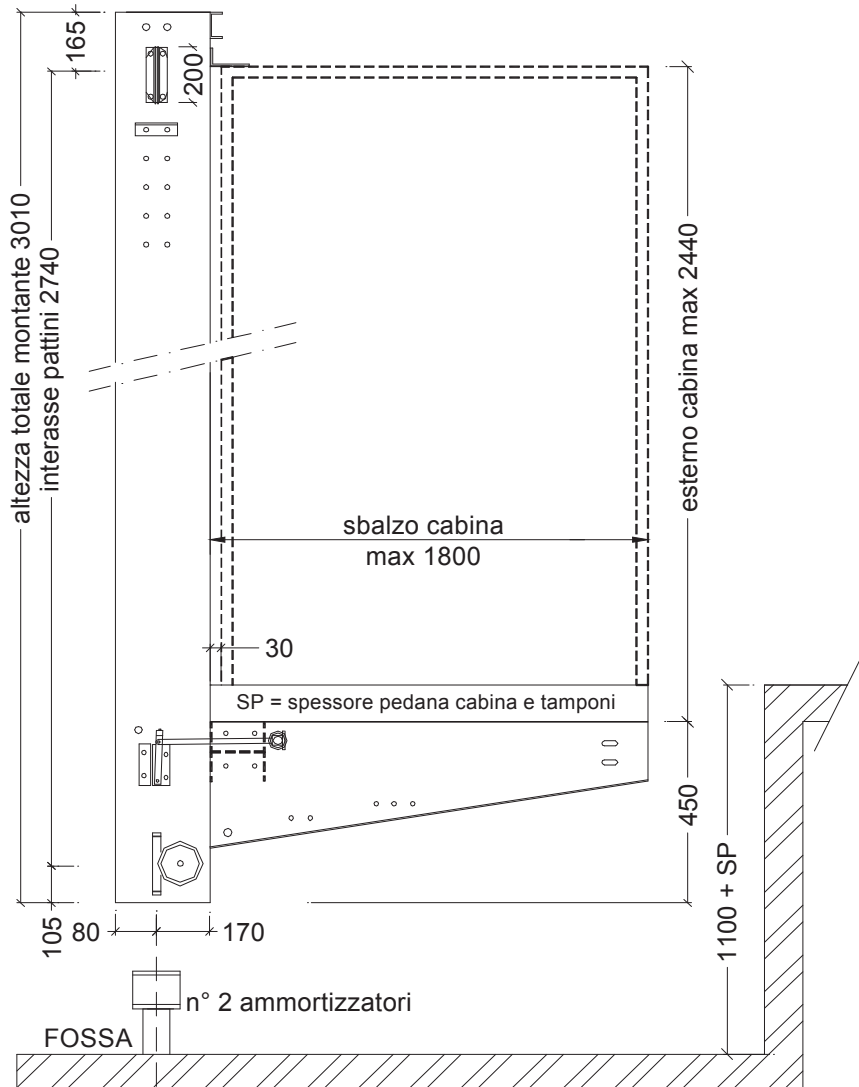
C.M.A.® srl

Costruzioni montacarichi e ascensori
 S.P. 238 Km 16+610 (ex Via Gravina)
 70033 Corato (BA) - C.P.C. n° 141
 P.IVA 05637380725

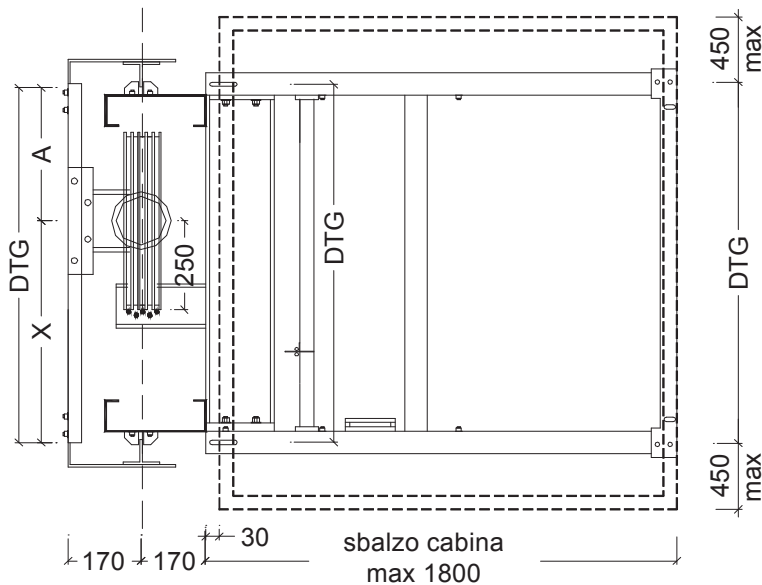
Tel. 080 35 88 714 - 080 35 93 018
 Fax 080 872 91 13
 www.ascensoricma.it
 E-mail: info@ascensoricma.it

SCHEDA TECNICA ARCATA IDRAULICA IN TAGLIA

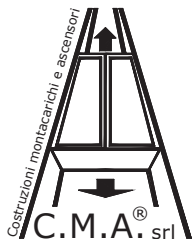
MODELLO 2004



Particolare staffa blocco
 tetto cabina



DATI TECNICI ARCATA 2004 CMA®				
DTG	1300	1500	1700	mm
X	800	1000	1100	mm
A	500	500	600	mm
N° FUNI	4/5			
FUNI	Ø12 6 x (9+9+1) S114			
PESO ARCATA	340	355	380	Kg
PESO ARCATINA	58	60	62	Kg



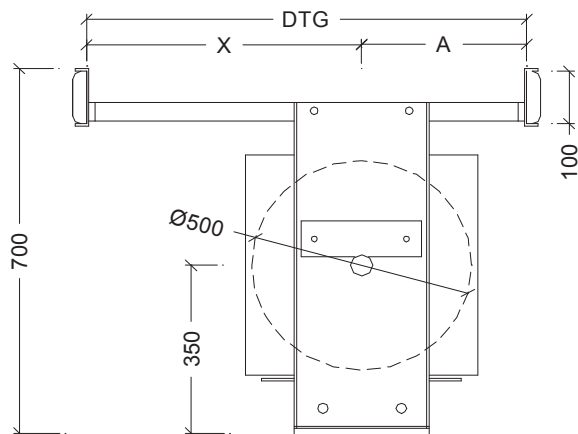
C.M.A.® srl

Costruzioni montacarichi e ascensori
 S.P. 238 Km 16+610 (ex Via Gravina)
 70033 Corato (BA) - C.P.C. N° 141
 P.IVA 05637380725

Tel. 080 35 88 714 - 080 35 93 018
 Fax 080 872 91 13
 www.ascensoricma.it
 E-mail: info@ascensoricma.it

SCHEDA TECNICA ARCATA IDRAULICA IN TAGLIA

MODELLO 2004



ARCATINA CMA®				
DTG	1300	1500	1700	mm
X	800	1000	1100	mm
A	500	500	600	mm
N° GOLE	5			
Ø PULEGGIA	500			mm
PESO ARCATINA	58	60	62	Kg

PARTICOLARE TRAVE DI BASE

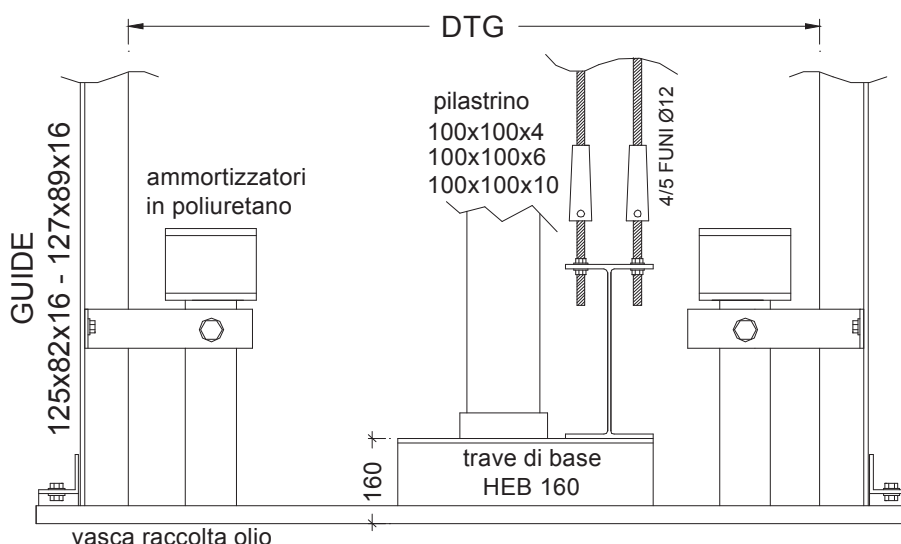
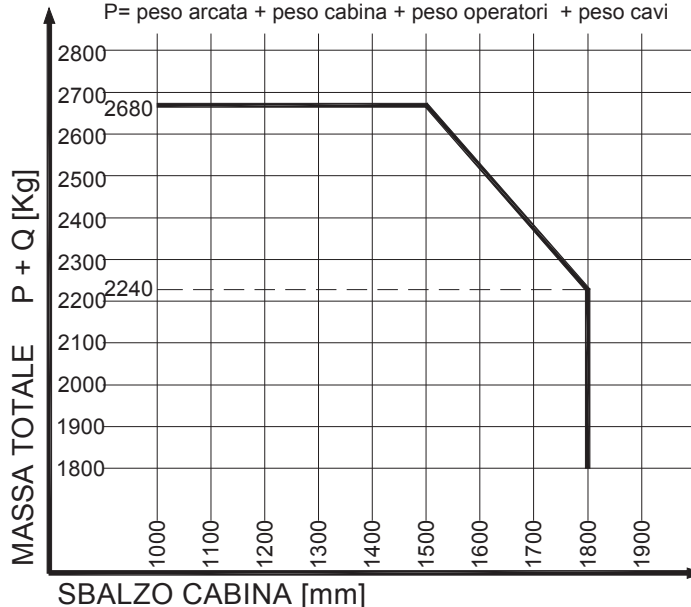


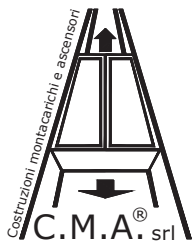
DIAGRAMMA DI IMPIEGO

Q= portata
 P= peso arcata + peso cabina + peso operatori + peso cavi



TRAVE DI BASE		
PILASTRINO	100x100x6 - 100x100x10	mm
Ø PISTONE	max 150	mm
TRAVE DI BASE	HEB 160	

AMMORTIZZATORI PER FOSSA	
MISURE dxh [mm]	125x100
TIPO	POLIURETANO - mod.E2
N° AMMORTIZZATORI	2
CARICO Q+P MIN [daN]	520
CARICO Q+P MAX [daN]	3020
VELOCITA' MAX [m/s]	0,70
Per velocità superiori contattare Ufficio tecnico CMA	



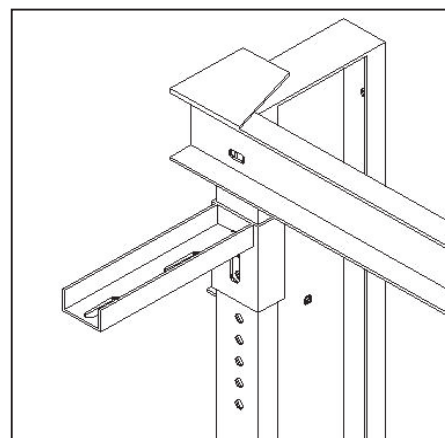
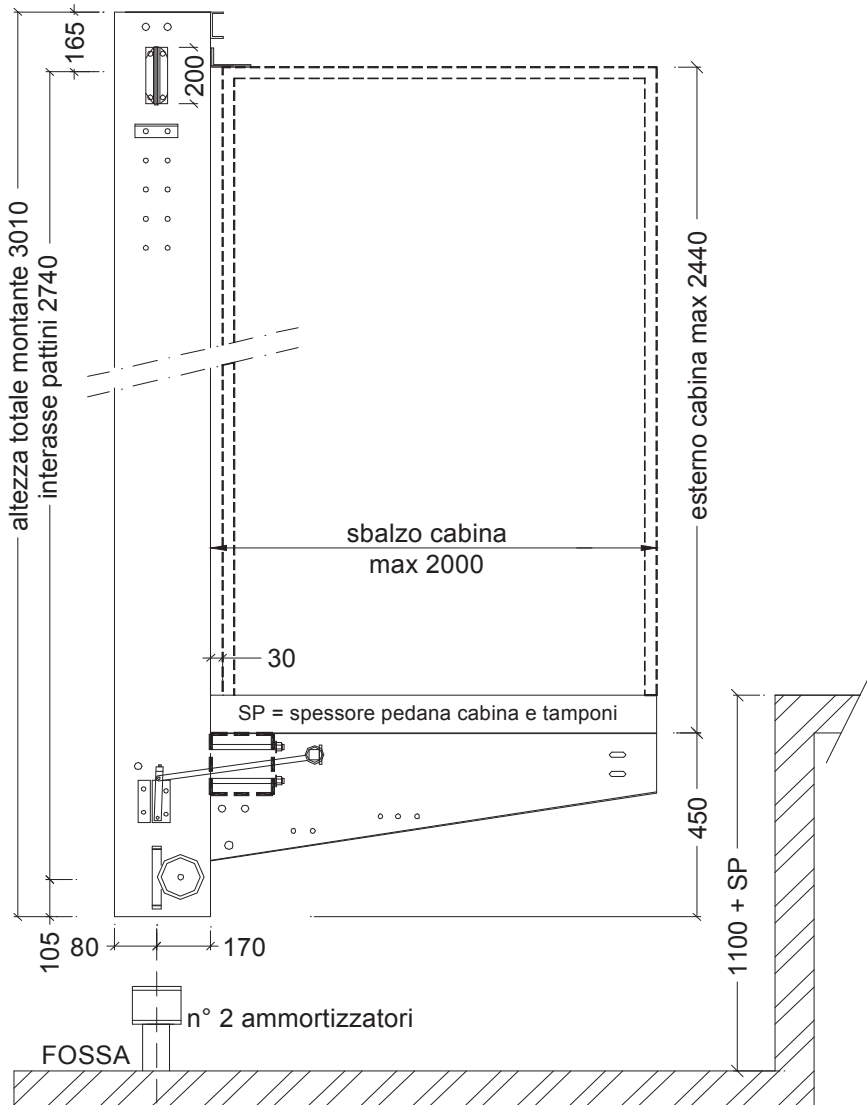
C.M.A.® srl

Costruzioni montacarichi e ascensori
 S.P. 238 Km 16+610 (ex Via Gravina)
 70033 Corato (BA) c.p.c. n° 141
 P.IVA 05637380725

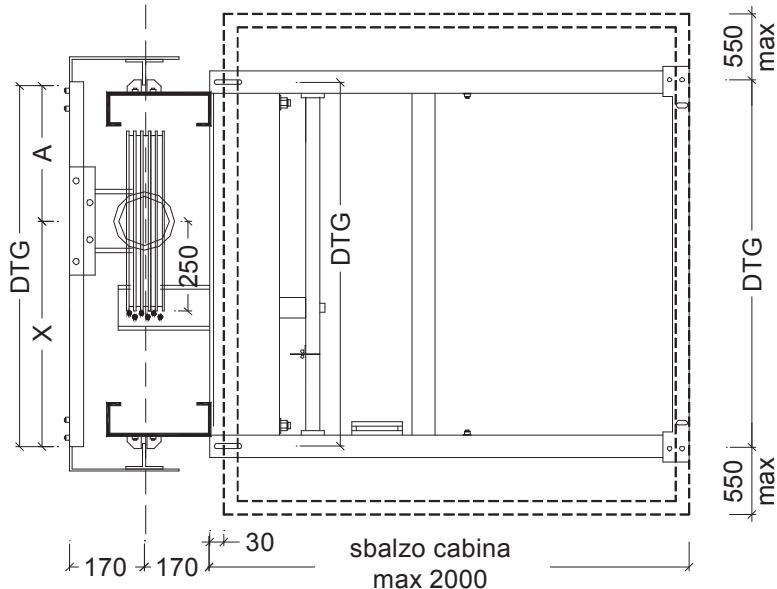
Tel. 080 35 88 714 - 080 35 93 018
 Fax 080 872 91 13
 www.ascensoricma.it
 E-mail: info@ascensoricma.it

SCHEDA TECNICA ARCATA IDRAULICA IN TAGLIA

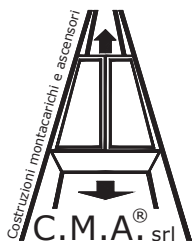
MODELLO 2005



Particolare staffa blocco
 tetto cabina



DATI TECNICI ARCATA 2005 CMA®				
DTG	1300	1500	1700	mm
X	800	1000	1100	mm
A	500	500	600	mm
N° FUNI	6			
FUNI	Ø12 6 x (9+9+1) S114			
PESO ARCATA	390	410	430	Kg
PESO ARCATINA	84	86	88	Kg



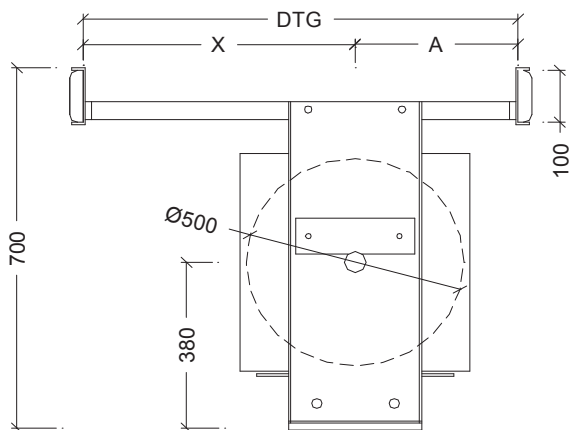
C.M.A.® srl

Costruzioni montacarichi e ascensori
 S.P. 238 Km 16+610 (ex Via Gravina)
 70033 Corato (BA) - C.P.C. n° 141
 P.IVA 05637380725

Tel. 080 35 88 714 - 080 35 93 018
 Fax 080 872 91 13
 www.ascensoricma.it
 E-mail: info@ascensoricma.it

SCHEDA TECNICA ARCATA IDRAULICA IN TAGLIA

MODELLO 2005



ARCATINA CMA®				
DTG	1300	1500	1700	mm
X	800	1000	1100	mm
A	500	500	600	mm
N° GOLE	6			
Ø PULEGGIA	500			mm
PESO ARCATINA	84	86	88	Kg

PARTICOLARE TRAVE DI BASE

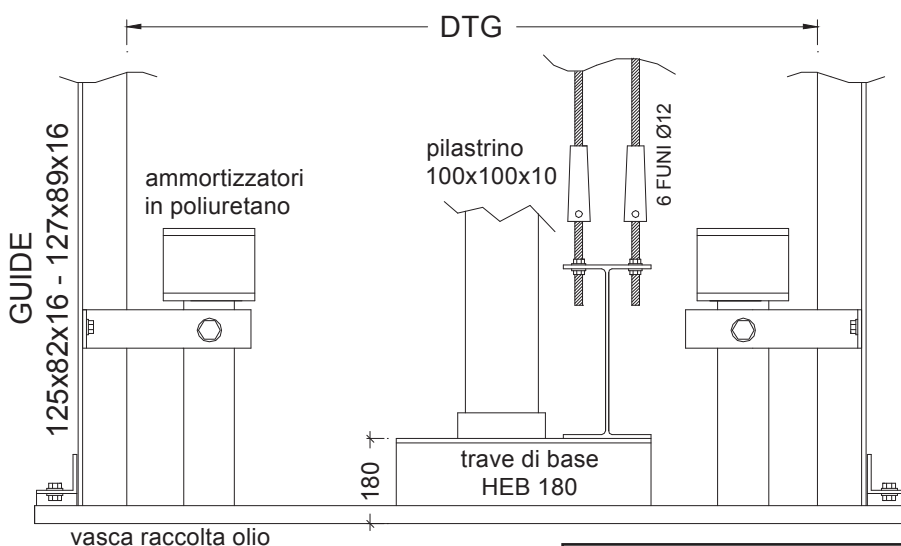
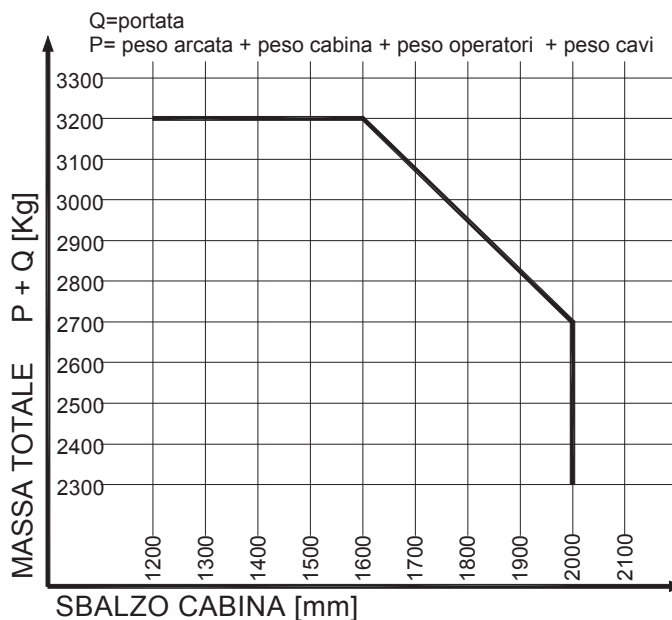


DIAGRAMMA DI IMPIEGO



TRAVE DI BASE		
PILASTRINO	100x100x10	mm
Ø PISTONE	max 150	mm
TRAVE DI BASE	HEB 160	

AMMORTIZZATORI PER FOSSA	
MISURE dxh [mm]	125x100
TIPO	POLIURETANO - mod.ACLA
N° AMMORTIZZATORI	2
CARICO Q+P MIN [daN]	620
CARICO Q+P MAX [daN]	4482
VELOCITA' MAX [m/s]	0,70
Per velocità superiori contattare Ufficio tecnico CMA	