

OIL QUANTITY (LITRES)	HL/300	HL/420
MINIMUM LEVEL	4	5
USEFUL OIL	38	55
TOTAL OIL	42	60

OILFREE POWER	HL/300	HL/420
UNIT WEIGHT	50	55

* MONO-PHASE MOTOR "AIR" 230V - 50Hz

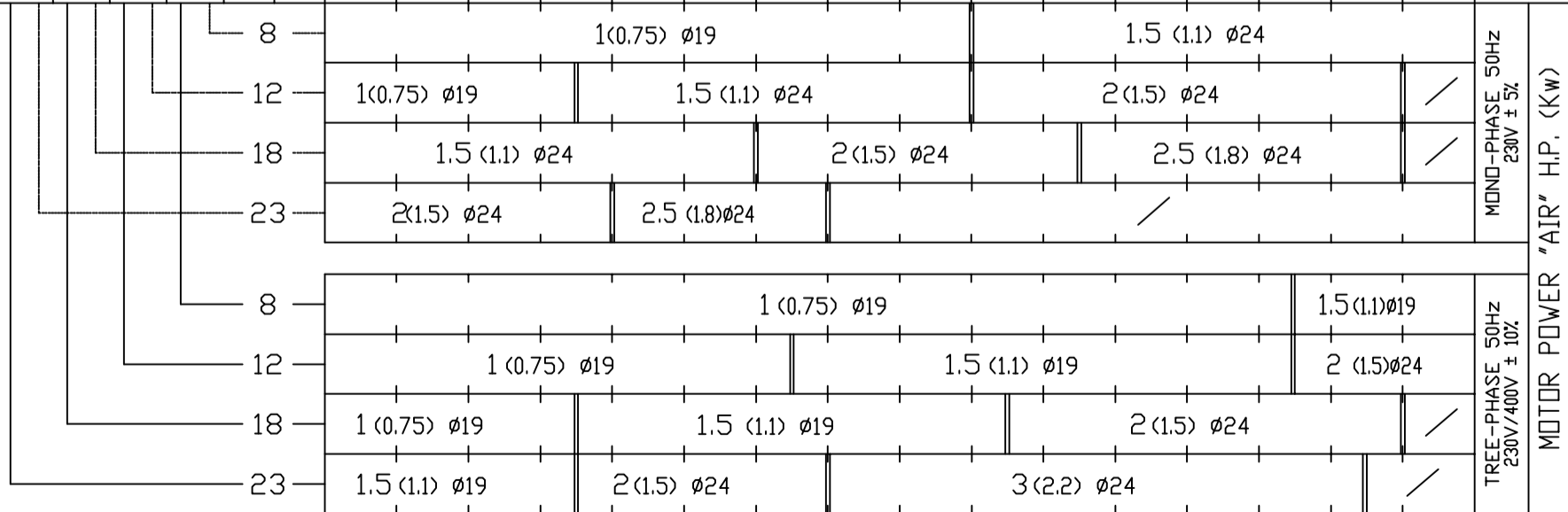
CV	KW	Ø	IN (A)	IA (A)
1	0.75	19	5.3	22
1.5	1.1	24	8.3	32
2	1.5	24	10.5	38
2.5	1.8	24	12.9	54

TREE-PHASE MOTOR "AIR" 400V - 50Hz

CV	KW	Ø	IN (A)	IA (A)
1	0.75	19	1.8	10
1.5	1.1	19	2.4	14
2	1.5	24	3.4	22
3	2.2	24	5.2	36

* ON LINES SUBJECTED TO VOLTAGE DREPS, PLEASE CONNECT THE SPECIAL CAPACITOR COD. 5042/1 (ON CAN BE SUPPLIED OPTIONALLY)

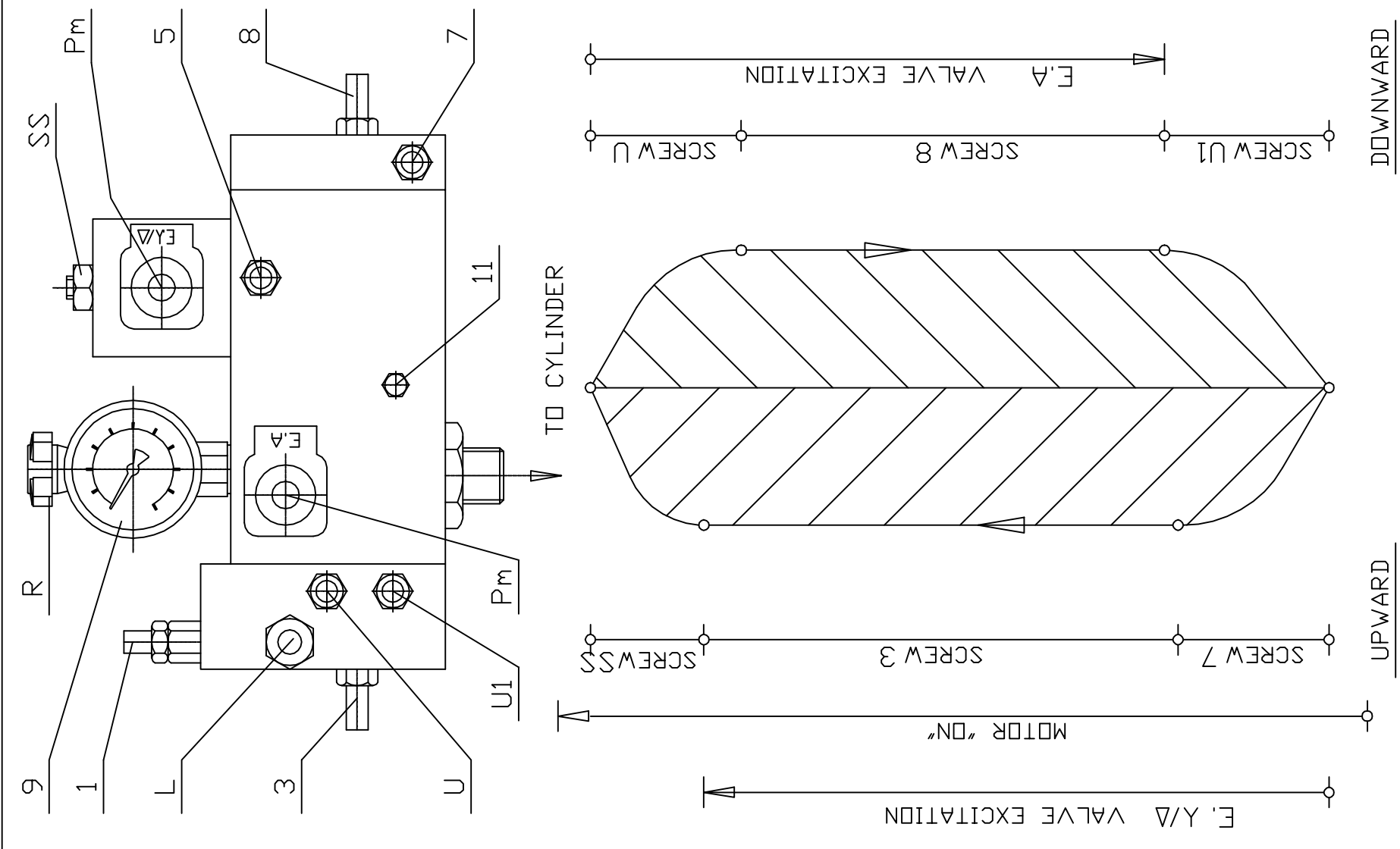
SPEED OF RAM IN UPWARD DIRECTION M/SEC (AVERAGE LOAD)	PUMP "SP" L/1' (Ø 19 / Ø 24)				RAM		STATIC PRESSURE IN BARS																				TOTAL LOAD (USEFUL LOAD+CAR+CAR-FRAME+ACC. =Kg >											
	23	18	12	8	Ød	e	16	17	18	19	20	21	22	23	24	25	26	27	28	29	30	31	32	33	34	35		36	37	38	39	40	41	42	43	44	45	46
	0.19	0.15	0.10	0.06	50	5	281	320	359	398	438	477	516	556	595	634	673	713	752	791	830	870	7.5	267	306	345		384	424	463	502	542	581	620	659	699	738	777
0.13	0.10	0.07	0.04	60	5	392	450	505	562	618	675	732	788	845	901	958	1015	1071	1128	1184	1240	7.5	368	425	481	538	594	651	707	764	820	877	933	990	1046	1103	1160	1216
0.09	0.07	0.05	0.03	70	5	535	612	688	766	843	920	997	1074	1151	1227	1305	1382	1458	1535	1612	1689	7.5	502	579	656	733	810	887	964	1041	1118	1195	1272	1349	1426	1503	1580	1657
0.07	0.06	0.04	0.02	80	5	704	805	905	1006	1106	1207	1307	1408	1508	1609	1709	1810	1910	2011	2111	2212	7.5	649	749	850	950	1051	1151	1252	1352	1453	1554	1654	1755	1855	1956	2056	2157
0.06	0.05	0.03	0.02	85	5	722	836	949	1063	1176	1290	1403	1517	1630	1744	1857	1971	2084	2198	2311	2425	12	566	667	767	869	968	1069	1169	1270	1370	1471	1571	1672	1772	1873	1973	2074
0.06	0.05	0.03	0.02	90	5	890	1017	1144	1271	1398	1526	1653	1780	1908	2035	2162	2289	2416	2544	2671	2798	7.5	816	944	1071	1198	1325	1453	1580	1707	1834	1962	2089	2216	2343	2471	2598	2725
					12	717	844	971	1098	1225	1353	1480	1607	1734	1861	1988	2116	2243	2370	2497	2624																	



THE WEIGHT INDICATED IN THIS TABLE HAS BEEN CALCULATED CONSIDERING THE ROD WEIGHT FOR A MAXIMUM STROKE (SEE DWG. 9020/... 9030/...)

UT	TABLE TO DETERMINE THE RATES OF PRESSURE - SPEED - POMPE "SP" - MOTOR "AIR" (50Hz) FOR - HL - POWER UNIT RELATING TO ROD Ø AND LOAD	DATE 05/02
		DWG. N. 9018/HL-50Hz

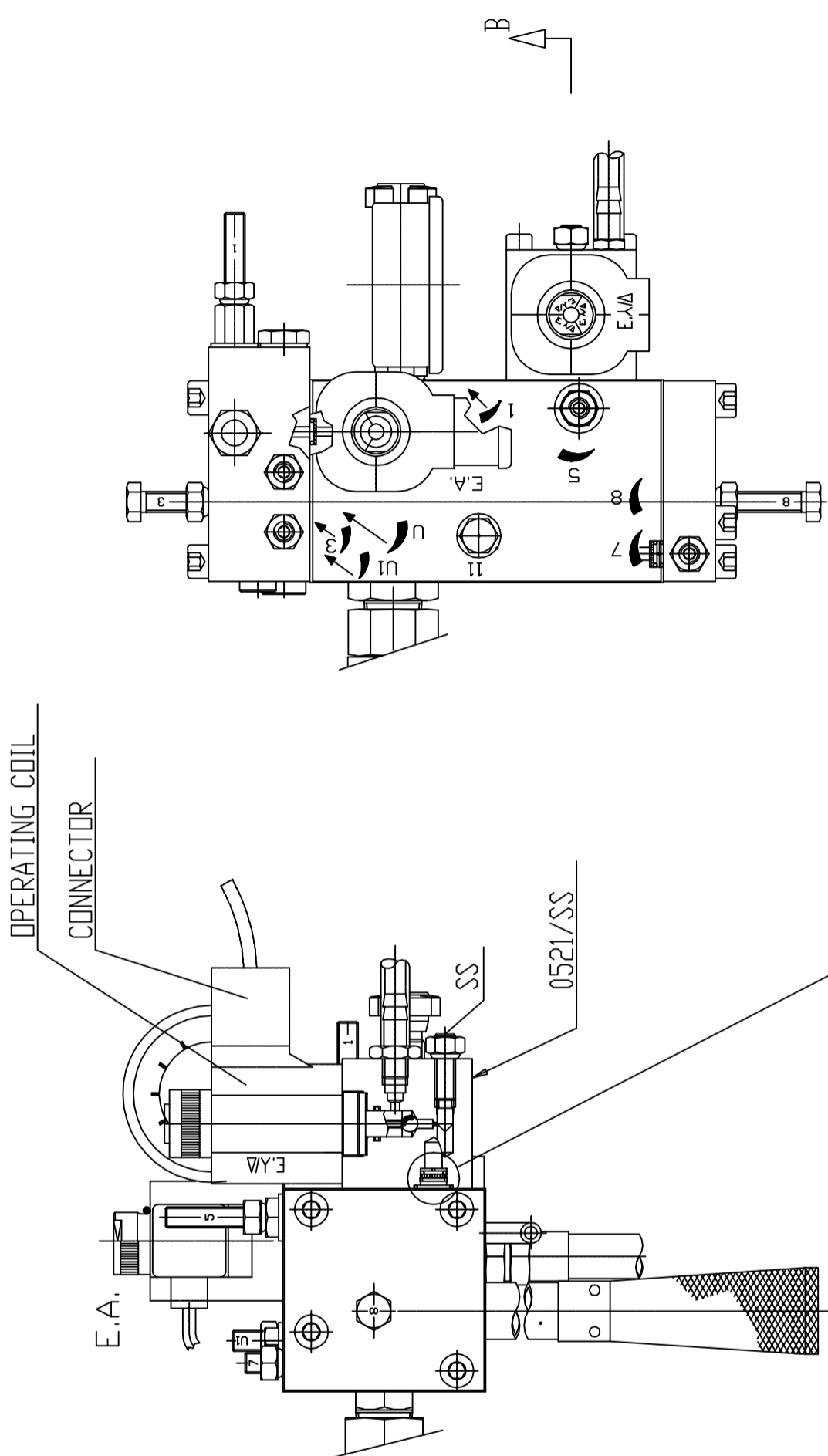
UT	<p>ADJUSTMENT AND OPERATION SCHEME OF DISTRIBUTOR FOR INDIRECT ACTING AND DIRECT ON-LINE STARTING INSTALLATION (SOFT STOP) (DISTRIBUTOR "HL" 8/28 L/MIN)</p>	<p>DATE 09/01 DWG N. 9233/SS</p>
----	--	--------------------------------------



ADJUSTMENT

- SCREW - 1 ADJUSTMENT FOR ROD COUNTERPRESSURE - TIGHTEN SCREW TO INCREASE COUNTERPRESSURE
- SCREW - 3 ADJUSTMENT FOR SPEED BALANCING IN UP/DOWN DIRECTION - TIGHTEN SCREW TO REDUCE SPEED
- SCREW - 5 ADJUSTMENT FOR MAX. PRESSURE - TIGHTEN SCREW TO INCREASE PRESSURE
- SCREW - 7 ADJUSTMENT FOR DEPARTURE IN UPWARD DIRECTION - TIGHTEN SCREW FOR SOFT DEPARTURE (1)
- SCREW - 8 ADJUSTMENT FOR VALVE "D" COUNTERPRESSURE - TIGHTEN SCREW TO INCREASE COUNTERPRESSURE
- 9 PRESSURE GAUGE
- SCREW-11 CONTROL OF PRESSURE SEAL BY NONRETURN VALVE WITH STANDSTILL SYSTEM
- SCREW-SS ADJUSTMENT SOFT ARRIVAL TO FLOOR LEVEL - SCREW DOWN FOR SOFT ARRIVAL
- E.A Δ DOWNWARD DIRECTION VALVE
- E.A Δ STAR DELTA START VALVE TYPE "SS" (SOFT STOP)
- L PUSH BUTTON FOR MANUAL EMERGENCY IN DOWNWARD DIRECTION
- Pm MANUAL PUSH BUTTON FOR STARTING EMERGENCY VALVE
- R TAP TO CUT OFF PRESSURE GAUGE
- SCREW - U DOWNWARD DEPARTURE DEVICE - TIGHTEN SCREW TO REDUCE SPEED (1)
- SCREW- U1 ADJUSTMENT FOR DECELERATION PHASE - SCREW DOWN FOR A SOFT DECELERATION
- SCREW-3+8 ADJUSTMENT AND TEST OF SAFETY VALVE FOR ROD FAILURE - UNSCREW THEM IN SAFETY

NOTE (1): DO NOT TIGHTEN COMPLETELY, SINCE DEPARTURE MOVEMENT MAY BE INTERRUPTED



SOFT STOP
COD. ES/SB-250/SS
0063 (Ø 0.8)

N.B.:

- TIGHTEN SCREW N°7 (WITH COLD OIL) UNTIL THE SYSTEM STOPS JUST ENGAGING THE MOTOR GEARS
- REF. DWG 9233/SS

UT		"SOFT STOP" ELECTRIC VALVE UPWARD "HL" HYDRAULIC POWER (8/28 L/1')	DATE	10/01
			DWG N.	9407/10