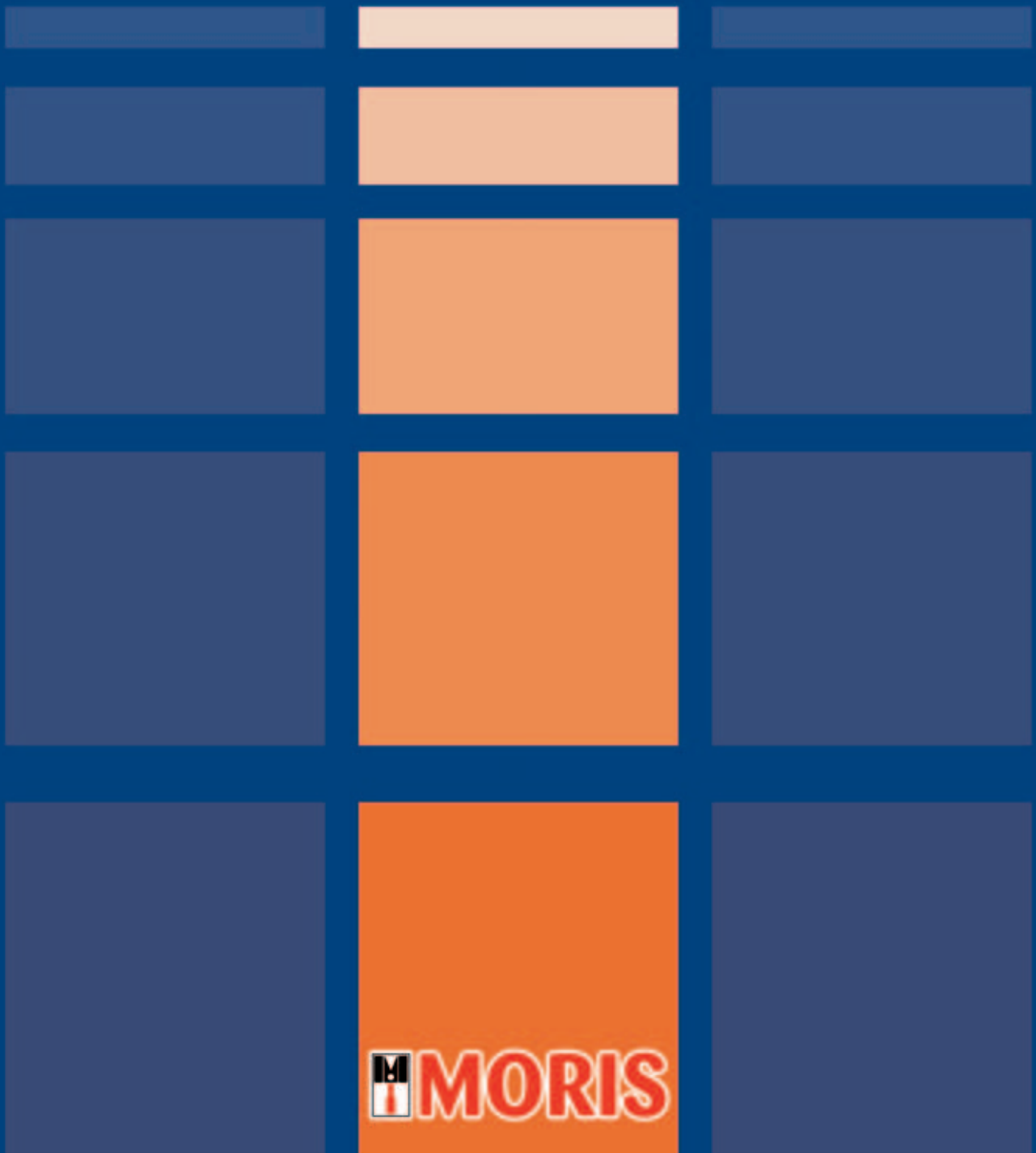




**PIATTAFORME ELEVATRICI OLEODINAMICHE  
HYDRAULIC LIFTING PLATFORMS**



**MY LIFT** è la piattaforma elevatrice ideale per l'abbattimento delle barriere architettoniche, consentendo di migliorare la qualità della vita perché facilita la mobilità non solo di persone anziane o disabili.

È conveniente perché i costi di acquisto e di esercizio sono contenuti, è elegante e personalizzabile perché, oltre alla ricca dotazione di serie, sono disponibili numerosi colori, accessori e combinazioni. Ogni **MY LIFT** è fornito di pulsanti braille e corrimano e particolare attenzione viene riservata alle dotazioni di sicurezza di serie e in opzione.



**MY LIFT** is the hydraulic lifting platform ideal for removing architectonic barriers, allowing quality of life to be improved as it aids mobility, not just for the elderly or disabled.

Profitable because purchase and maintenance costs are low, it is stylish and adaptable because apart from the comprehensive standard equipment, a variety of colours, accessories and combinations are available.

Each **MY LIFT** is supplied with Braille push buttons and handrail and special care is reserved to safety devices, standard and an option.



**MY LIFT**, disponibile nella versione per utenti disabili e nella versione PE per villette unifamiliari, è la risposta su misura per il superamento di barriere architettoniche, in linea con le specifiche necessità dell'utilizzatore.

La sua installazione non richiede grandi interventi strutturali, garantisce la massima sicurezza, utilizzando le tecnologie più avanzate ad un costo decisamente contenuto.

Ogni piattaforma **MY LIFT** è un esemplare unico, personalizzata in base alle misure ed ai rilievi del luogo di installazione.

L'elevatore si integra gradevolmente con l'ambiente, armonizzandosi con l'arredamento.

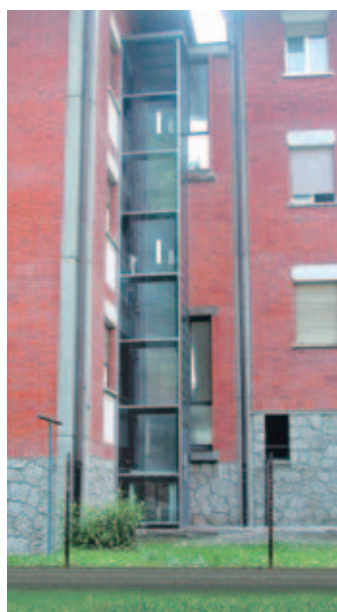


**MY LIFT**, available in the type for disabled people and in PE type for one-family houses, the tailor-made answer for overcoming the architectural barriers, according with the specifications needed by the user.

Its installation does not require great structural interventions; it grants the maximum safety, using the most advanced technologies, at a decidedly controlled cost.

Each **MY LIFT** platform is a unique specimen, personalized according to measures and characteristics of the installation site.

The elevator integrates easily with the environment, harmonizing with the furniture.



## CABINA ELECTRA

I numerosi abbinamenti di colori, oltre a soddisfare le esigenze dell'utente, rendono la cabina ELECTRA brillante e luminosa.

La cabina è realizzata in lamiera plastificata, i pavimenti sono vinilici con granuli di quarzo, illuminazione al neon a controsoffitto o con faretto annegati nel cielino. Le finiture di cabina sono di serie in SIMILINOX F12PPS.

La cabina ELECTRA può essere realizzata anche con acciai inox.



## ELECTRA CAR

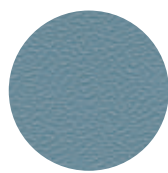
The great number of colours couplings, besides satisfying the requests by our customers, make ELECTRA car brilliant and bright.

ELECTRA car is made from plasticized plate, floors are made from vinyl with quartz granules, lighting with neon under ceiling or spotlights in the ceiling.

Car finish, as standard, is in INOX F12PPS; on request stainless steels may be used to make the car.



## CABINE - LAMIERA PLASTIFICATA • CAR WALLS - PLASTICIZED PLATE



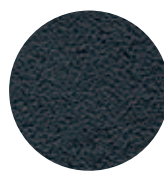
AZZURRO B1  
LIGHT BLUE B1



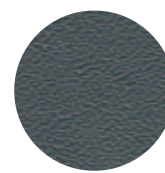
SABBIA A3  
SAND A3



BIANCO A1  
WHITE A1



BLU STELLATO B41 SMM  
STARRY BLUE B41 SMM



GRIGIO ANTRACITE N4  
DARK GREY N4



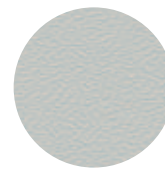
SIMILINOX F12 PPS  
INOX F12 PPS



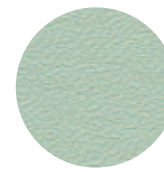
BIANCO ANTICO DT29 SMA  
ANCIENT WHITE DT29 SMA



CREMA G1  
CREAM G1

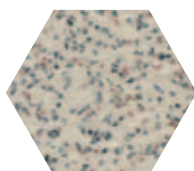


GRIGIO CHIARO N1  
LIGHT GREY N1

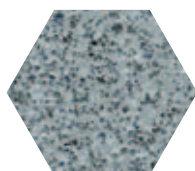


VERDE CHIARO V14  
LIGHT GREEN V14

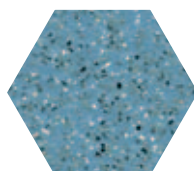
## PAVIMENTI • FLOORS



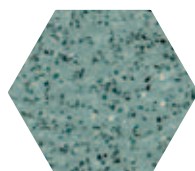
SABBIA  
SAND



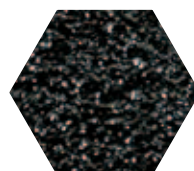
GRIGIO  
GREY



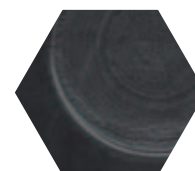
BLU  
BLUE



VERDE  
GREEN



NERO  
BLACK



GOMMA NERA A BOLLE  
BLACK RUBBER, BUBBLES

## CABINA VEGA

La posizione dell'illuminazione e nuovi abbinamenti di colori distinguono la cabina VEGA: neon o faretti sono applicati sopra la bottoniera di cabina. Anche la cabina VEGA è in lamiera plastificata o, a richiesta, in acciaio inox.



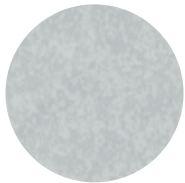
## VEGA CAR

Lighting position and new colours couplings distinguish VEGA car: neon or spotlights are put on the top of car push button. This car also is made from plasticized plate or, on request, from stainless steel.



## CABINE - LAMIERA PLASTIFICATA (cabina standard)

## CAR WALLS - PLASTICIZED PLATE (standard cars)



GRIGIO PPS1  
GREY PPS1



ROSSO F3 SM  
RED F3 SM



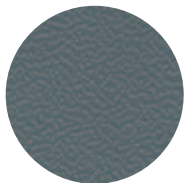
AVORIO PPS15  
IVORY PPS15



BIANCO VENATO PPS13  
VEINED WHITE PPS13



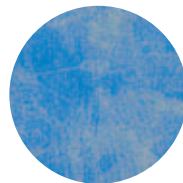
SIMILINOX F12 PPS  
INOX F12 PPS



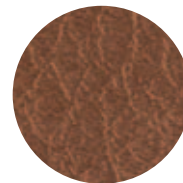
GRIGIO SCURO N21  
DARK GREY N21



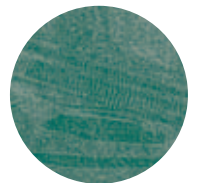
VERDE CHIARO V 14  
LIGHT GREEN V 14



BLU SPAZZOLATO PPS30  
BRUSHED BLUE PPS30



CUOIO DP 4  
LEATHER DP 4

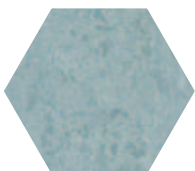


VERDE SPAZZOLATO PPS29  
BRUSHED GREEN PPS29

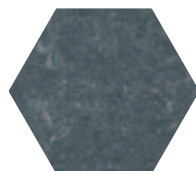
## PAVIMENTI • FLOORS

PAVIMENTI IN LINOLEUM  
(standard per MY LIFT e MY LIFT PE)

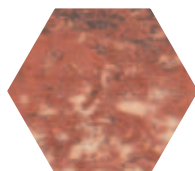
LINOLEUM FLOORS  
(standard for MY LIFT and MY LIFT PE)



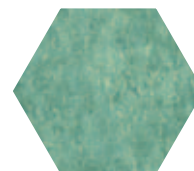
GRIGIO-AZZURRO CHIARO  
LIGHT GREY-BLUE



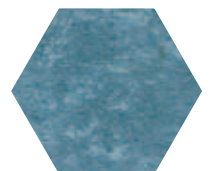
ANTRACITE • DARK GREY



MARRONE • BROWN



VERDE • GREEN



BLU • BLUE

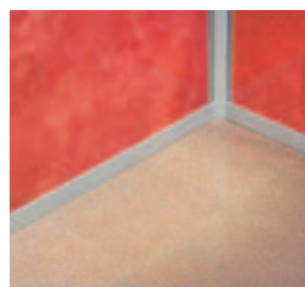
## CABINA ANTARES

La cabina ANTARES, raffinata ed elegante, è realizzata in laminato plastico. Le finiture della cabina sono di serie in SIMILINOX F12PPS, a richiesta in altri colori o materiali come l'acciaio inox. Possono essere richiesti altri colori diversi da quelli in campionario.

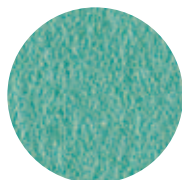


## ANTARES CAR

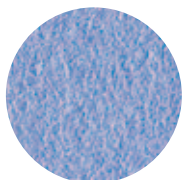
ANTARES car, distinguished and stylish, is made from laminated plastic. The car has a standard finish in INOX F12PPS, other colours or materials as stainless steel on request. Further colours are available besides those in the sample case.



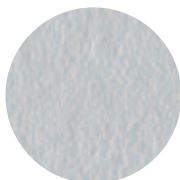
## CABINE - LAMINATO PLASTICO • CAR WALLS - LAMINATED PLASTIC



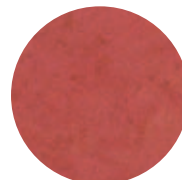
VERDE 2408  
GREEN 2408



BLU 2421  
BLUE 2421



GRIGIO 2401  
GREY 2401



ROSSO 2201  
RED 2201



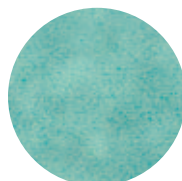
BIANCO 1907  
WHITE 1907



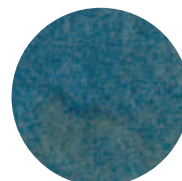
AVORIO 2525  
IVORY 2525



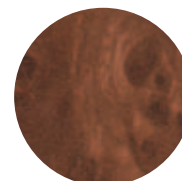
ROSA ANTICO 2569  
PINK 2569



VERDE 2539  
GREEN 2539



BLU 2202  
BLUE 2202



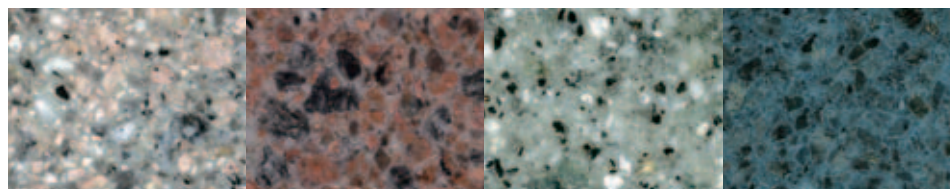
RADICA 1835  
BRIER 1835

## PAVIMENTI • FLOORS

PAVIMENTI GRANITO  
(solo per MY LIFT PE)

GRANITE FLOORS  
(only for MY LIFT PE)

DISPONIBILI  
A RICHIESTA  
  
AVAILABLE  
ON REQUEST



## PORTE DI PIANO

Le porte di piano, in lamiera d'acciaio, antiruggine o verniciata RAL o rivestite in acciaio, sono disponibili in ampia gamma di dimensioni, cieche (normali o REI 60-120) o con finestra di dimensioni variabili fino al vetro panoramico.



## LANDING DOORS

Landing doors, steel plate made, primed or RAL painted, are available in many dimensions, blind (also REI 60-120) or with different windows until panoramic glass.



La porta panoramica con anta in alluminio e telaio in acciaio e' sinonimo di robustezza, flessibilita' nell'installazione, eleganza in ogni ambiente.

Il telaio puo' essere grezzo, rivestito in alluminio o verniciato RAL come l'anta.

La porta e' disponibile in tutte le misure.

*The door with panoramic window with aluminium shutter and steel frame is synonymous with sturdiness, flexibility of installation, elegance in any setting. the frame can be unfinished, aluminium-coated or RAL-painted to match the door. The door is available in all sizes.*





Per chi la preferisce, e' disponibile la porta tutta in alluminio; di serie viene fornita anodizzata argento, con chiusura a scomparsa (nelle misure 750 e 800 mm) e fermo a 90°.

In opzione la verniciatura RAL.

*For those who prefer it, an all-aluminium door is available; supplied in anodized silver as standard, with hidden locking feature (measurements 750 and 800 mm) and fixed position at 90°. RAL painting is an optional.*

## CENTRALINA CON ARMADIO

In opzione, l'armadio per la centralina nella versione HL/AR, verniciato RAL 7032, garantisce eleganza e massima silenziosita'.

*As an optional, the power unit casing in the HL/AR version, RAL 7032 painted, guarantees elegance and maximum quiet.*

## HYDRAULIC POWER UNIT WITH BOX



## QUADRO ELETTRICO ELETTRIC BOARD



**PIATTAFORME ELEVATRICI MYLIFT®**



Ai sensi delle Direttive Comunitarie  
89/392/CEE-89/336/CEE-92/91/CEE-73/23/CEE-93/96/CEE-93/42/CEE  
e successive integrazioni e modifiche e a ISO 9386-1.

**LIFTING PLATFORMS MYLIFT®**



According to the EC Directives  
89/392/CEE-89/336/CEE-92/91/CEE-73/23/CEE-93/96/CEE-93/42/CEE  
and following supplements and modifications and ISO 9386-1.

LE FOTO, I DISEGNI E I COLORI HANNO VALORE INDICATIVO E NON VINCOLANTE.  
MORIS ITALIA SI RISERVA DI APPORTARE MODIFICHE SENZA PREAVVISO.

LE FOTO, I DISEGNI E I COLORI HANNO VALORE INDICATIVO E NON VINCOLANTE.  
MORIS ITALIA SI RISERVA DI APPORTARE MODIFICHE SENZA PREAVVISO.



**MORIS** italia s.r.l.

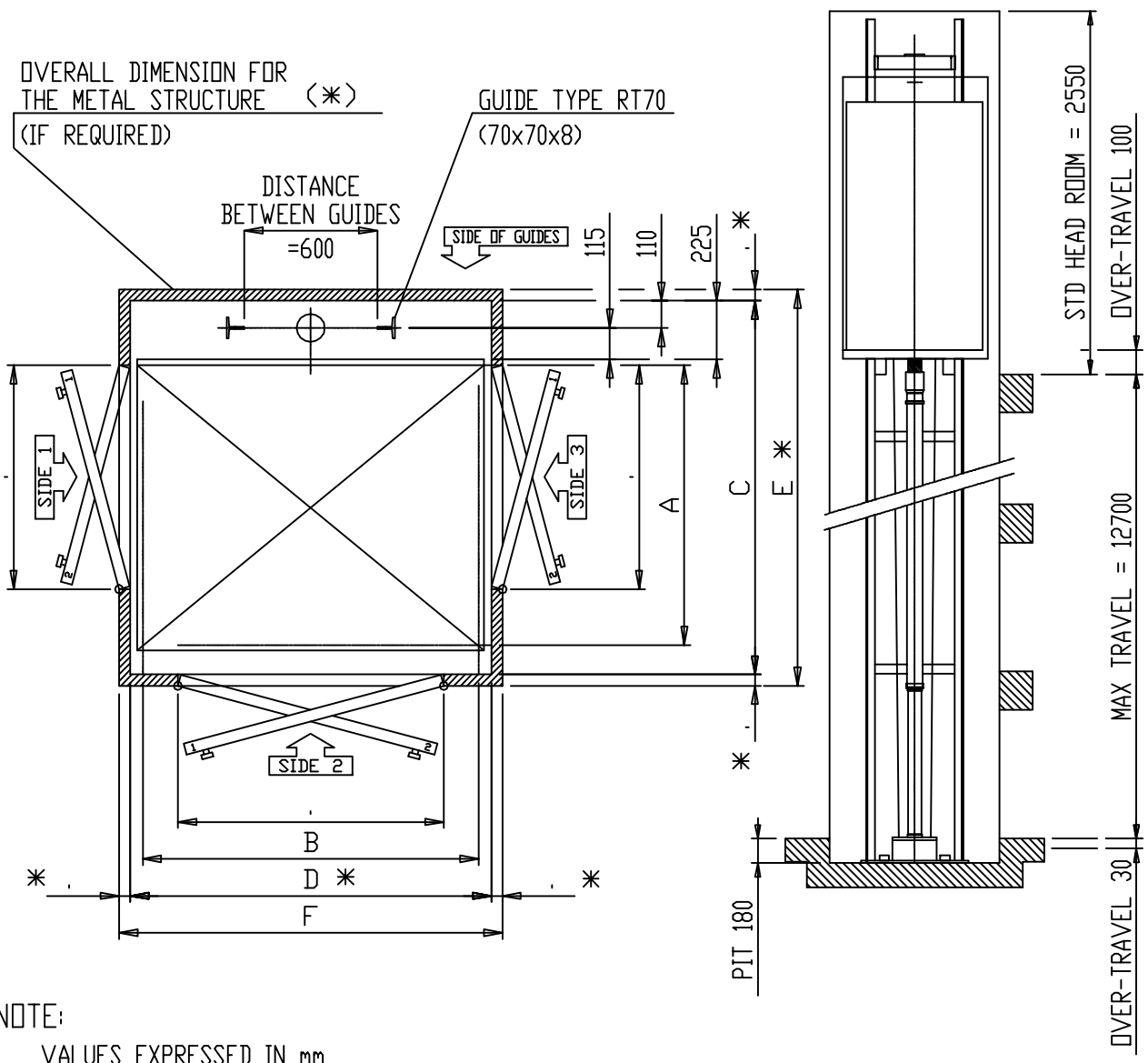


Via Mazzini, 51 • 21023 MALGESSO (VA) • Italy • Tel. 0039-0332787011 • Fax 0039-0332706437  
Via Como, 15 • 21020 MONVALLE (VA) • Italy • Tel. 0039-0332799024 • Fax 0039-0332798028  
www.moris.it • e-mail: moris@moris.it

# LIFTING PLATFORMS FOR PERSONS WITH IMPAIRED MOBILITY "MYLIFT"

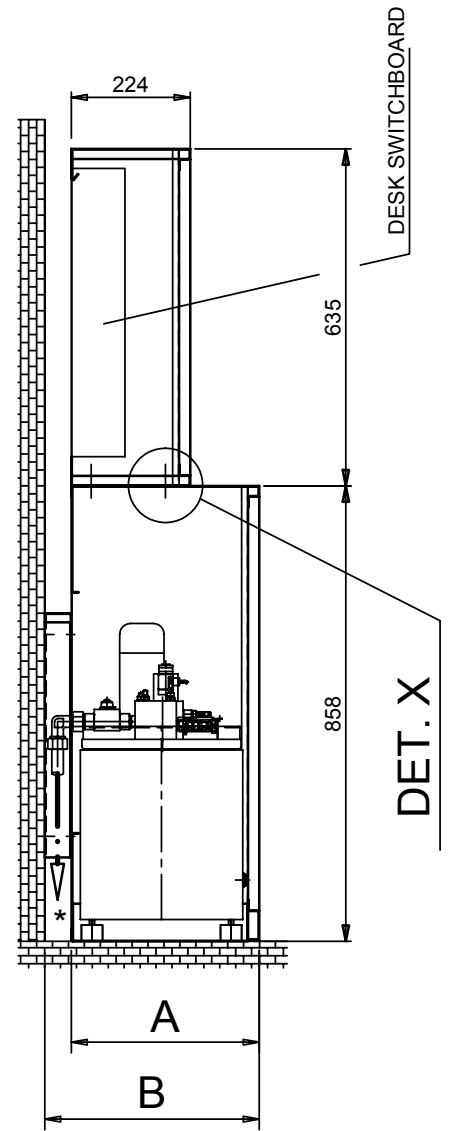
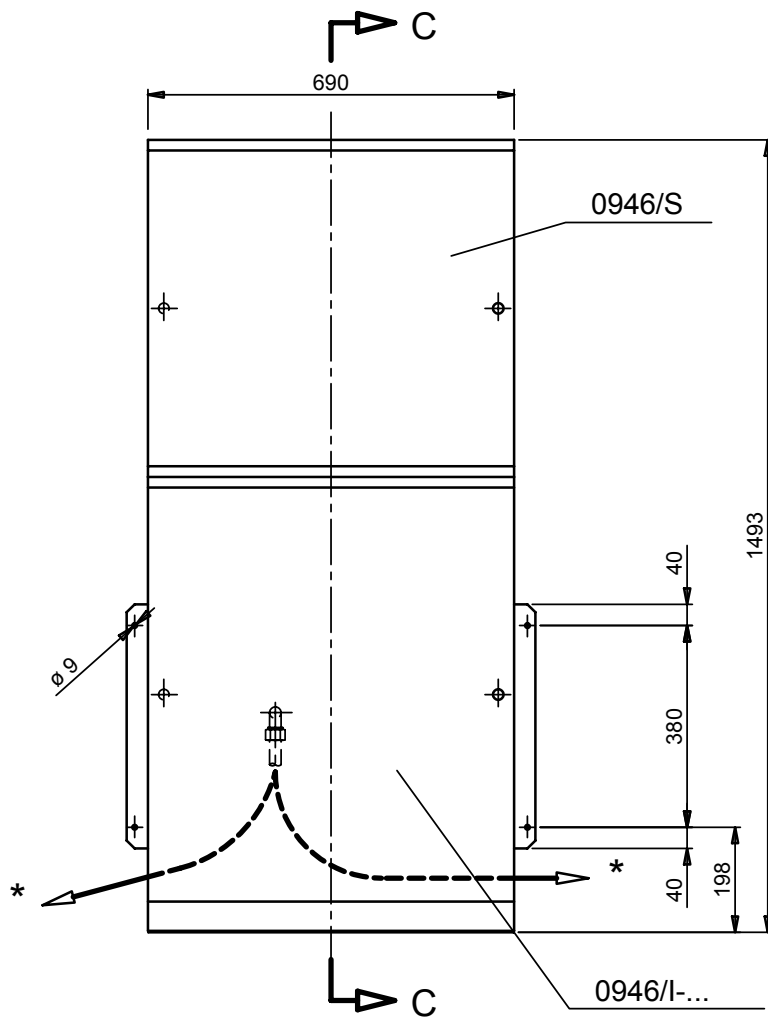
(ACCORDING: DPR 459/96 - 89/392 EEC - CIRC. No 157296/97)

		A	B	C	D	E	F	SIDE 1		SIDE 2		SIDE 3		Kg	
								R	L	R	L	R	L		
STANDARD	ML/1	800	1300	1160	1400			800				800		250	
	ML/2	1000	1300	1360	1400			800		800		800		250	
OPTIONAL	ML/3													250	
TYPE OF PLANT		CAR		SHAFT		METAL STRUCTURE		LANDING DOORS				MAX CAPACITY			

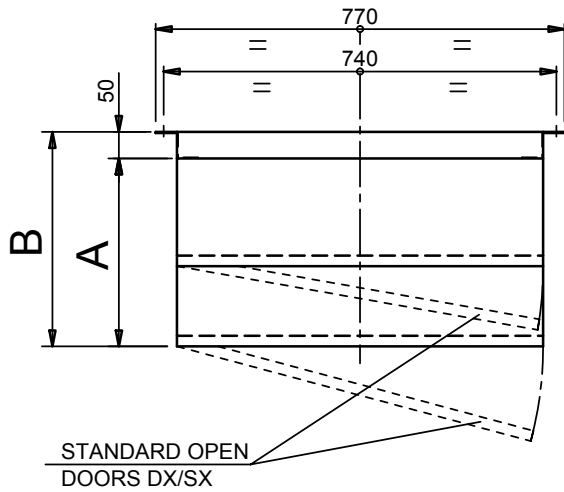


NOTE:  
VALUES EXPRESSED IN mm

UT	"MYLIFT" PLANT FOR DISABLED PEOPLE (STANDARD MODEL)	DATE 01/01
		REV/DWG: 9660

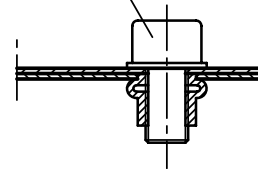


SECTION C-C



TANK PATTERN	A	B	FIGURE N°	GROSS WEIGHT Kg ~
HL/300	355	405	0946/S	30
			0946/I-300	80
HL/420	475	525	0946/S	30
			0946/I-420	90

SCREW TCEI M8x15 NR 4  
WASHER  $\varnothing 9$



DET. X

\* - OIL PIPES AND ELECTRIC CABLES OUTPUT

PAINTING RAL 7032 (ORANGE PEEL)

UT	

CABINET ASSEMBLY  
FOR TANKS: AR/HL

DATE 01/02

DWG NR. 9681

**HANDBOOK FOR THE INSTALLATION  
AND THE MAINTENANCE  
- OF THE FITTER**

**ELEVATOR PLATFORM FOR DISABLE**



**WARNINGS**

The present manual is destined to the fitter of the platform.

Before installing or carrying out actions of maintenance of the platform to read with attention the present document and the manual customer it leave integrating of the present document. The parts, which are not closely linked to these instructions, are only for information and clarifications.

After the installation you must deliver the documentation of the case following the next information.

**ELEVATOR PLATFORM FOR DISABLE**

- this is the user manual of construction according to attachment V of directive 89/392/CEE and following modifications -  
- do not destroy - do not alter - integrate only with added pages - compilation date 13.06.00

**INDEX:**

a.	Characteristics of the machine	p. 03
b.	Card of technical data	p. 04
c.	Definition of the terms used	p. 04
01.	Packing	p. 05
02.	Storage	p. 05
03.	Transport and movement	p. 05
04.	Assemblage, mounting, dismantling and remounting	p. 06
05.	Installation	p. 08
06.	Normal use and particular functioning (foreseen and reasonable predictable). Incorrect and unforeseen use. Malfunction, fault, damage. Individual machine protection.	p. 17
07.	Cleaning and spare parts	p. 18
08.	Setting and calibration	p. 18
09.	Maintenance, inspections and checks, reparation	p. 18
10.	Control of corrected installation and relative documentation	p. 19
11.	Attached tables	p. 20
Module of conformity of the assembly to the plan		
12.	Annotations and recommendation	p. 23
Attached:		
•	Outline power pack to unifilar	
•	Hydraulic outline of the system	
•	Total design of the system and Tables of assembly (you see detail directory)	
•	Elevator platforms for disables: Documentation of the platform and handbook customer instructions for the use (documentation to deliver to the completed customer the assembly and the control)	

## a. CHARACTERISTICS OF THE MACHINE

The elevator platforms, described in this handbook, are constructed to art rule in order to allow the overcoming of an uneven to the persons with reduced or prevented mobility. These elevator platforms are concurred in via alternative to lift in the participation of adaptation or in order exceeding contained differences of quota in the private buildings in construction or restructure, let alone in the external spaces whose plans have been introduced after the 11 day August 1989. Said platforms they are constituted from a mobile structure, bringing the cargo platform that it slides on two fixed guides on a wall of a closed space that can be constructed in whichever resistant material and must guarantee the protection of the system from the atmospheric agents.

The constructor cannot be considered responsible for eventual damages caused from use and/or improper, erroneous and not reasonable installation and/or maintenance that must be carried out following the prescription of which to the present held document account of the norms of good technique.

The elevator platforms for disable are composed substantially by:

- Hydraulic piston.
- Hydraulic power pack.
- Electric panel control.
- Cabin lacking in doors.
- Doors to the plans.
- Guides and eventually rammer.

The elevator platforms for disable are equipped of:

- Apparatus parachute that timely blocks the platform on the guides in the case verified the slackening or the breach also of one single rope.
- Device of emergency against the fast reduction of the cabin.
- Device of electromechanical control of emergency of the doors against the opening of the doors in cabin absence.
- Device of alarm in cabin.
- Automatic or manual device for the reduction of emergency.
- Lamp to low tension for the lighting system of the cabin.

This elevator platform is in compliance with the following dispositions of law:

- Directive Machines 89/392/CEE and following modifications and completions: 91/368/CEE, 93/44/CEE and 93/68/CEE incorporate with the 24 D.P.R. of July 1996 n. 459.
- Low directive Tension 73/23/CEE and following modifications and completions: 93/68/CEE incorporate from Law 18 October 1997 n. 791.
- Directive Electromagnetic Compatibility 89/336/CEE and following modifications and completions: 93/31/CEE incorporate with D.L. 4th Decembers 1992 n. 476.
- Explanatory circular of 14 April 1997 n°157296, for the application of the presidential decree 24 July 1996, n°459, to the freight elevators and the elevator platforms for disable.
- Norma ISO 9386-1 elevator Platforms for persons with reduced mobility.
- Directive Medical Apparatus 93/42/CEE incorporate with D. Lgs. n. 46/97.

- This is the user manual of construction according to attachment V of directive 89/392/CEE and following modifications -  
 - do not destroy - do not alter - integrate only with added pages - compilation date 13.06.00 -

## b. CARD OF TECHNICAL DATA OF THE PLATFORM

On the base of the type of system to which they make service, the elevator platforms come realised on measure in the within of the following dimensions and characteristics:

DESCRIPTION	VALUE
<b>Abilities persons</b>	One person with mobility reduced more a companion
<b>Capacity with cabin</b>	250 Kg
<b>Speed</b>	6 m/min
<b>Traction</b>	In ransom 2:1
<b>Stopped</b>	From 2 to 4
<b>Accesses to the cabin</b>	Until 4
<b>Useful race</b>	Until 12,70 mt.
<b>Manoeuvre</b>	Present man with emergency
<b>Feeding</b>	230 V single phase - 400 V three phase
<b>Motor power</b>	Max. 1,8 kW single phase - max. 2,2 kW three phase
<b>Dimensions of hydraulic power pack</b>	600 x 420 x 650 mm
<b>Dimensions of picture power pack</b>	600 x 550 x 220 mm
<b>Standard head</b>	2550 mm
<b>Dimensions of footrest</b>	To demand (cabin max 1100 x 1400 mm)
<b>Cabin</b>	Constructed in sheet as plastic, with bottom in Linoleum or rubber to bubbles, illuminated through one lamp to neon embedded in appropriate lamp on the ceiling
<b>Doors of plan</b>	To a clapper to not visible, half-automatic hinges, with windows in glass, antirust paint job, apparatus mechanic of closing, shock-absorber, external big handle in aluminium

### Noise emitted by the machine

The level of continuous acoustic pressure advised A in the workplace by the operator is usually under 70db.

### Conformity system power pack

The system power pack of the machine is in compliance with norms CEI EN 60204-1 and CEI 44-5.

### Relative conformity to the Electromagnetic Compatibility

The machine is in compliance with the Directive Electromagnetic Compatibility 89/336/CEE and following integration 92/31/CEE and D.L. n°476 of the 04,12,1992.

## c. DEFINITION OF THE TERMS UTILISED

Refer to norm UNI EN 292 for definitions of the terms utilised in this manual.

## 1. PACKING

The closet comes supplied both assembled that not assembled in its members in some packs composed from one base in wood (footrest) and from means in order to immobilise the necks you mail on the footrest (iron hoop, thermo-shrink nylon, etc).

To remove thermo-reduction protecting nylon eventually and the iron hoop; to the inside of the protections of plastic/cardboard the parts of not assembled closet are found. After to have unpacked the closet you have to verify integrity of the content. To contact the company in the case the material was not consistent and not to proceed except different indication.

The elements of the packing (footrest of wood, plastic nail, belt fasteners, bags, etc.) they do not have to be left to the capacity of the children because they are potential sources of danger. The elements of the packing moreover go stored and placed to refusal following the enforced dispositions of law.

## 2. STORAGE

The elevator platform, in case do not come immediately installed, must be conserved to the inside of them pack in a dry atmosphere, repaired from atmospheric agents and to temperature comprised between 0 °C and 40 °C.

The packing must be far placed from sources of heat, flames, etc.

The packing must be maintained in a straight position, avoiding overlapping packs one over the other.

## 3. TRANSPORT AND MOVEMENT

The transport of the machine not assembled from the supplier to the installation place happens through truck, or with means of the supplier or through society of road haulage. The drainage from the truck and the movement of packs integral must be carried out through transpallets (to cargo of the supplier) and in the respect of the enforced norm. If it is not had transpallets, the not assembled parts of machine must by hand be unloaded, unpacking the machine and to unload directly from the truck. Some pieces are excessive heavy for a manual transport, in particular steel doors, piston, guides and hydraulic telephone power pack must second be enlivened the enforced dispositions of law in matter. In any case pieces with advanced weight to the 30 kg. are marked through adhesive label and go second enlivened demanded how much from the enforced norm.

### Characteristics of packing

MACHINE	FOOTREST 1	FOOTREST 2	FOOTREST 3
<b>Gross weight</b>	Kg	Kg	Kg
<b>Dimensions</b>	M	M	M
<b>Contained</b>	Panels, mounting, crosspieces, doors	Piston, guides, kit hydraulic	Hydraulic power pack, electrical panel control, electrical material

#### 4. ASSEMBLAGE, MOUNTING, DISMANTLING AND REMOUNTING

The assemblage of the members, the mounting, the dismantling and the eventual remounting, in other place, of the platform, must follow the passages previewed in the attached explanatory tables to the manual present. The tables, to which it makes reference re-produce the operations to carry out, are tidy for table number and are completion part of the present instructions. Remember that every operation on the structure or the members of the platform must perfectly be executed from staff authorised acquaintance of all the relative criteria to the norms of good technical norm and that companies the final document of conformity second the previewed technical detailed lists.

On the supply of the instructions of continuation supplied the fitter will have to supply to the assembly of the platform. The tables BASE come used for the indication of the assembly sequences. Moreover, beyond to following the prescription, they always go respected the enforced norms and laws in the installation country.

##### Platform on independent frame:

Held account:

- of the **Tav.0894/01** table that represents the general sight of the platform and as the same one will be introduced to the end of the assembly the fitter will choose with particular cures the location of the hydraulic telephone power pack in such way that the position of same the not constrictions in some way income and the escape from the platform. The choice must be carried out of time in time to second of the requirements
- - of the **Tav.0894/02** table (seen structural metallic – rammer) that it will contain and support the platform. The structure will be composed from four foot straight or mounting reinforced they give of the hardening crosspieces (the distance must be adapted and to allow the disembarkation of the passengers to the pre-established levels) that they act as or from I reinforce and that they guarantee the rigidity of the plan. The fitter will be organised in order to begin the assembly of the structure.

The assembly of the platform will have moreover to be put into effect from the fitter second the described sequence of continuation:

##### **Tav.0894/02-1:**

- for the implantation of the base of the platform to mounting through lives bolted in the indicated positions;
- for the implantation to earth the platform through lives to pressure;
- 

##### **Tav.0894/02-2:**

- for the implantation between they of mounting with the crosspieces and to the assemblage of the elements carrying lateral with the crosspieces. Moreover in the angular node the lateral auctions that come fixed through lives to the carrying structure and to the node converge. Particular it must be placed in merit to the lives to use.

**Tav.0894-03** for the implantation of the rope of the arched one and the guides, the piston and the advanced ransom (exploded details to the successive ones that they follow):

- **Tav.0894/03-1** connection and implantation of the guides and the arched /cylinder. The members of the guides go fixed between them with lives bolted like from the outline (inferior part), while the piston goes fixed with one little square bolted to the structure. In the advanced part there is the implantation of the guides to the structure and the implantation arched /cylinder happens with one screw bolted to the cylinder

- **Tav.0894/03-2** implantation of the connection of the guides to the rope. The rope it comes mounted around to the piston through bolted lives. The bolt guides come berthed to earth in the indicated way.

**Tav.0894/04** for the total assembly of the arched one lend particular attention for:

- the coupling back that works from anchorage plate;
- the two elements carrying connected with one square to the platform door cabin;
- the platform door cabin;
- the detail on like mounting the dial foot of fine race.

The ulterior indications are considered moreover following: **Tav.0894/04-01** relative detail to the connection of the arched one. To the support chassis door cabin the anchorage plate goes fixed. The chassis is composed from two mounting connected with a square to the profile of support of the chassis on which then the cabin will be mounted. They come then mounted the two crosspieces of hardening and I reinforce of the profiles door cabin.

**Tav.0894/05**: for the assembly of ropes. Given to the characteristics of the platform ropes the connections come fixed to the chassis door cabin (are particular and second guarantee part of the amortisation) and to rope the indications of which to the table.

**Tav.0894/06**: for the implantation of the platform of the wall of the cabin side guides after to have coupled ropes by means of: - connection of the chassis where you can put inside the cabin - implantation of the parades side guides and the platform where you can put inside the cabin. Moreover the containing wall the guides goes berthed is in the inferior part that in the advanced part. The platform comes instead bolted to the profiles door cabin. Moreover on the supply of the **Tav.0894/06-1** to fix the side walls of the cabin. The sidewalls of the cabin are composed from rectangular panels that must together be bolted and that they constitute the wall. The external walls are joined with a profile of reinforce like evidenced in figure. For last it comes then mounted the handrail inside.

**Tav.0894/07**: for the completion of the assembly of the platform with the implantation of the advanced hat of the fixed structure with bolts. This general table previews exploded of the lateral closings and the zone the door contained in while in the **Tav.0894/07-01** the lateral closings and the zone are evidenced in detail door.

**Tav.0894/08 - Tav.0894/09**: for place of the feeding of the telephone power pack / piston and the cable power pack.

Completion of the installation on structure in masonry / armed concrete. For the completion of the assembly of the platform on structure as over indicated the fitter will have to proceed like of indicated continuation:

**Tav.0894/10** for the definition of the general conditions of assembly. It is specified moreover that also in such case particular care in the choice of the location of the hydraulic telephone power pack will have to be placed that does not have dangerous for people that uses the platform.

**Tav.0894/11** for the corrected definition of the skeleton of the tower in walling/C.A. The holes in order to allow to the income and the escape the platform must be of the previewed dimensions.

**Tav.0894/12** for the general insertion of the structure in presence of one opening in masonry C.A.). The platform will have to be inserted to the inside of the structure and the connections will have to be those of the three successive ones exploded.

- **Tav.0894/12-1** for the details of the connection and the implantation of the guides and the arched/cylinder. The members of the guides must be fixed between they with lives bolted as from the outline (inferior part), while the piston will have to be fixed with one little square bolted to the structure. In the advanced part there is the implantation of the guides to the structure and the implantation arched/cylinder happens with a screw bolted to the cylinder as evidenced from the design - all it then comes fixed on the walling structure through lives to pressure to second use the instructions given from the manufacturers in the technical documentation linked (depth of implantation - conditions regarding the characteristics of the walls - carrying capacity - etc)
- **Tav.0894/12-2** for the details of the connection guides to rope and to the walling structure. The rope it comes mounted around to the piston through bolted lives. The bolted guides must be berthed to earth in the indicated way
- **Tav.0894/12-3** for the details of the implantation of the connection of the guides to the rope. The rope she comes mounted around to the piston through bolted lives. The bolted guides come berthed to earth in the indicated way.

**Tav.0894/13** for the detail of the anchorage particular of the door through a dowel to pressure to place you must follow the instructions given from the supplier

## 5. INSTALLATION

### 5.1. - Designs for the sequence of installation

The installation must second be carried out the instructions of which to point 4 held account of the outline of tables of indicated continuation (tables BAS serve for the sequence of the assembled).

### Platform on independent rammer

Drawing	Title
0894 – 01	General view
0894 – 02	Structural view – rammer
0894 – 02 – 1	Details for linking the base
0894 – 02 – 2	Details for mounted linking
0894 – 03	View rope – arched and guides
0894 – 03 – 1	Details of links about guides arched / cylinder
0894 – 03 – 2	Details of links about the guide rope
0894 – 04	View of structured arched
0894 – 04 – 1	Details about structural links
0894 – 05	Card ropes
0894 – 06	Platform and wall of cabin – side guide
0894 – 07	General view with hat assembling
0894 – 07 – 1	Details about lateral locking and about the doors area
0894 – 08	Layout about electrical exchange and piston
0894 – 09	Layout about electric cable

### Completion of the installation on a walling structure / reinforced concrete

Drawing	Title
0894 – 10	General view (in walling)
0894 – 11	View about walling tower and / or reinforced concrete
0894 – 12	View about rope, arcade and guides (walling and / or reinforced concrete)
0894 – 12 – 1	Details of links about guides – arcade (reinforced concrete)
0894 – 12 – 2	Details of links about guide connected to rope (reinforced concrete)
0894 – 12 – 3	Details of links about guide arcade (walling)
0894 – 13	Details about the anchorage door (walling and reinforced concrete)

## 5.2. - Ulterior norms of assembly and installation

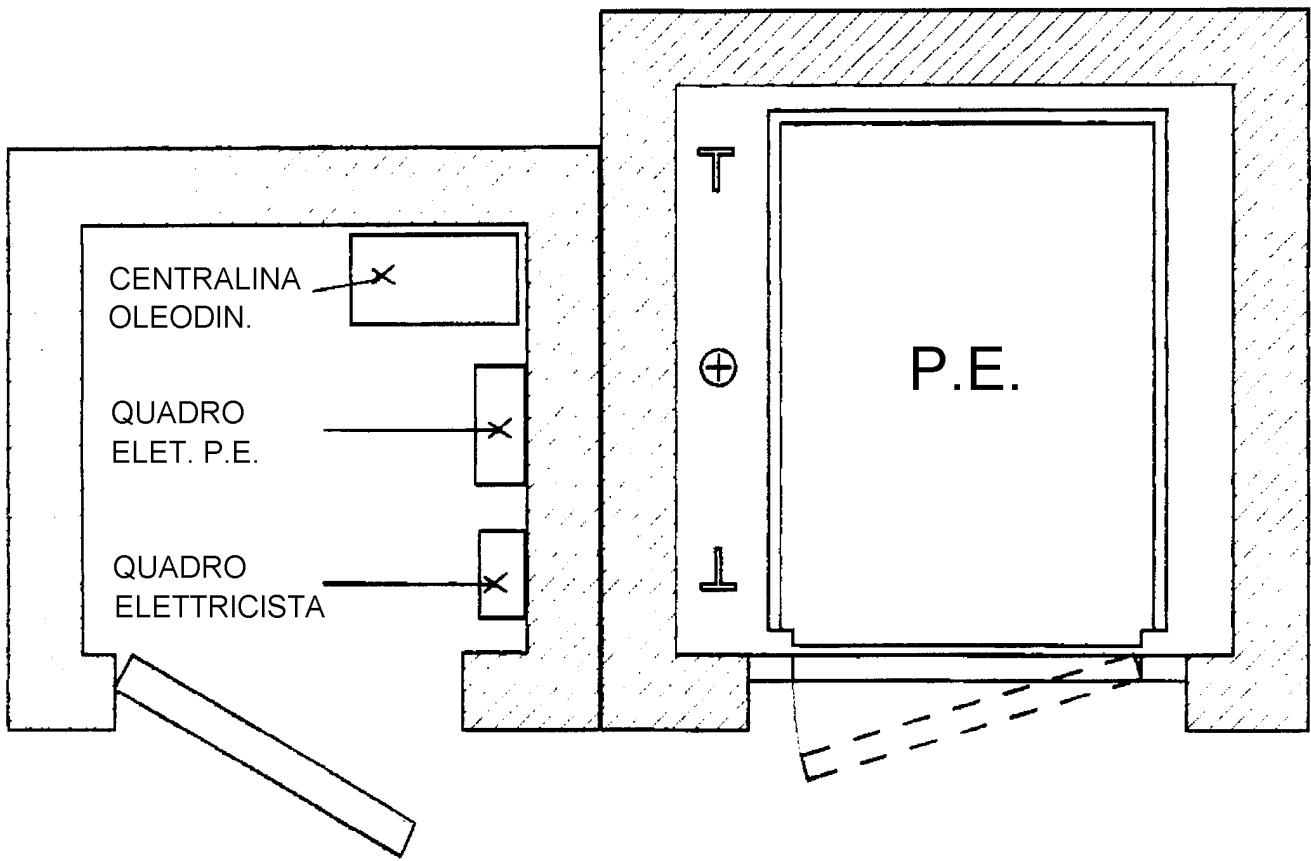
### Positioning Machinery

In the positioning of the machinery is necessary to keep in mind that the mechanical members and power pack must be protect from the harmful and dangerous effects of external agents who can themselves be verified on the installation place which, as an example:

1. the solid income of water and bodies the
2. effects derived from humidity, elevated or reduced temperature, corrosion, excessive atmospheric pollution, etc. The protection (vain race) must be planned and constructed and the P.E. it must be installed so that the specified agents over do not prevent a sure and reliable operation. It does not have to be possible I accumulate it of humidity on the raceways. A possible positioning of the parts can be that one under indicated. Other positioning go of time in time agreed.

## ELEVATOR PLATFORM FOR DISABLE

- This is the user manual of construction according to attachment V of directive 89/392/CEE and following modifications -  
 - do not destroy - do not alter - integrate only with added pages - compilation date 13.06.00 -



### Values Games and unevenness

The distance between protection and threshold of income of the 20 P.E. must be inferior to millimetre. The unevenness between platform and 10 plans must be inferior to millimetre.

### Value Calibration Valve of Overpressure

The overpressure valve comes calibrate to a value exceeding of 10% approximately the value of the pressure of full load (as an example with 23 bars the calibration with the overpressure valve comes carried out to approximately 26 bars).

### Type of process of lead sulphate

The several positions of calibration of the group valves of the hydraulic telephone power pack must be marked with use it of a not delete varnish, in such way that can easy be verified eventual tampering or intervention on the regulations.

### Protection Tubes through walls and not

The hydraulic tubes do not have adequately been protected in order to avoid the risk of crushing, abrasion, etc. Curving with beams too much tightened - at least 10 times the diameter of the tube must be avoided.

### Guides

To always control the alignment of the guides in the phases of assembly and to the completion of the same one.

### Prescription for Electrician

1. To do an adapted system of grounding.
2. To install in the computer room a power pack with feeding to 230/250 V alternated with interrupting differential and magneto-thermo.
3. The lighting system on the surface of the landing of the footrest and on the device of commando must be controlled from an adjacent switch to measure the 50 P.E. and light does not have to be inferior to on their surface.
4. Sufficient lighting system of the computer room must be guaranteed one.
5. Must be installed of the taken power pack of escape on the picture of the computer room, on the bottom ditch of the P.E. and on the landing of disembarkation of the P.E. in proximity of the doors of the same one.
6. To accurately control the positions of the extra-race. Threshold and Ramp If the platform is planned for stopping to a level situated to of over of the surface of the landing inferior, going in such a way to constitute a 15 unevenness that exceeds the millimetre, then the system of one ramp of plan must be equipped. Such ramp it must have a not advanced inclination to: -
  - 1:4 on a vertical rising until 50 millimetre
  - 1:6 on a vertical rising until 100 millimetre
  - 1:12 on a vertical rising beyond 100 millimetres.

### 5.3. - Trusts and warnings to place in the p.e.

It is necessary to expose on the platform of the warnings bringing like minimum the following information:

- a) the nominal capacity in kilograms and the maximum number of transported persons;
- b) the name of the constructor, the number of series and the year of installation.

The device of emergency alarm must be of yellow colour and must be marked with a symbol to bell shape. The device of arrest of emergency of which to point 1.9.2.3 (of norm 9386) must be of red colour and must be marked from word STOP.

A symbol of disable person to every income must be exposed. The height of such symbol must be at least 50 millimetres.

In the external part of doors, trap doors etc that it gives approached the machinery must apply one bringing nameplate the following words:

***DANGER - MACHINERY***

***It is prohibited the access to persons not authorised***

On the body machine they must be brought back of the instructions detailed for the manual manoeuvre of emergency.

In the case of systems with hydraulic transmission, nameplate must be applied one next to the valve of manual lowering:

**DANGER**  
***Valve of lowering of emergency***

The switch for the feeding main power pack of the elevator must have a mark. In the case of P.E. with hydraulic transmission, the switch must be marked with the following words:

***TO ONLY EXTINGUISH WHEN THE ELEVATOR IS FOUND CLOSE TO LOW LEVEL***

In the income to the below part of the platform to the entry point, must be applied to a bringing nameplate the instructions for a sure use of the device of specified mechanical blocking to point 1.5.3, as an example:

***TO EXTINGUISH the MAIN SWITCH***  
***To arrange the device of blocking in position corrected before approaching the below part of the footrest.***

The alarm beacon of which to point 1.9.2.4.1 it must bring the following words:

***ALARM OF THE P.E.***

The not usable of the ceiling must be marked with a vertical trust indicating

***SURFACE NOT WALKING***

To the outside and the inside of the power pack to place:

***ATTENTION EQUIPMENT UNDER TENSION WITH PICTURE TO OPEN SHOP***

**SEGNALETICA**

**Manoeuvre by hand**

(To place close to the little valve of drainage of the pressure)

**DANGER MACHINERY**

It is prohibited the access to  
not authorised people

**DANGER**

**Valve of lowering of  
emergency**

**TO ONLY EXTINGUISH WHEN THE  
ELEVATOR IS FOUND MORE LOW TO  
THE LEVEL**

# **TO EXTINGUISH THE MAIN SWITCH**

**To arrange the device of blocking in  
position corrected before  
approaching the below part of the  
footrest**

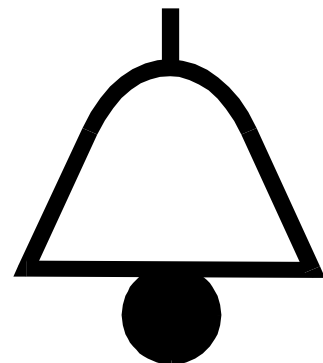
**ALARM OF THE P.E.**

**SURFACE NOT  
WALKING**

**PROHIBITED THE  
INCOME TO THE NOT  
AUTHORISED  
PEOPLE**

**STOP**

**ALARM**





**ATTENTION**

**EQUIPMENT UNDER TENSION  
WITH PICTURE TO OPEN  
SHOP**

## 6. NORMAL USES AND PARTICULAR FUNCTIONING (FORESEEN AND REASONABLY FORESEEABLE). ANOMALOUS AND UNFORESEEN USE. MALFUNCTION, BREAKS AND DAMAGE. INDIVIDUAL PROTECTION APPARATUS

The described elevator platforms in this handbook are used, like described to the paragraph "a", in order to allow the overcoming of an unevenness to the persons with reduced or prevented mobility. Every other use is improper and can therefore involve of the dangers. The constructor cannot be considered responsible for eventual damages caused from improper, erroneous uses and not reasonable.

### 6.1. - Things not to do

- Not to exceed the maximum number of persons from the platform
- Not to exceed the maximum capacity of the platform.
- Not to use the platform in order to transport objects.
- Not to force the opening of the door during the operation.
- Out of service not to put the installed devices of emergency from the constructor.
- To only use the platform for the concurred uses.

### 6.2. - Most frequent inconveniences: causes and remedies

Premised that the greater part of the operation defects is taken place for a use not corrected of the platform, some possible not good functioning are indicated in the following table that they can verify and the provisions to take for erase them.

DISADVANTAGE	POSSIBLE CAUSES	REMEDY
Block of the elevator Platform	Door not sluice well	To verify the closing of the door
	Lack tension	To rearm general switch
	Out of order power pack.	To call the qualified staff for the repair.
	Power pack hand-touch or breakdown	To verify and to repair the power pack

### 6.3. - Reduction manoeuver by hand

In case of interruption of the feeding power pack a device for the automatic reduction to the inferior next plan of the platform is present. In case operation of this device automatic rifle is not possible to carry out the manual reduction of the platform pressing the red push-button of the manual discharge valve mail in the premises machines after to have removed tension to the system power pack. Lend the maximum attention to the operation since there are persons to edge of the platform. The persons to the inside of the platform can remain in contact with the external staff through the starting device life-voice pressing the appropriate push-button in cabin.

## 7. CLEANING AND CHANGING PARTS

The relative table to the periodic maintenance is looked at.

The change of parts of the platform must be executed from authorised staff and be brought back in the paragraph " Registry of the maintenance " of the installation handbook.

In necessity case, to contact the constructor.

## 8. SETTING AND CALIBRATION

The regulation of the machine must be carried out solo from qualified staff.

## 9. MAINTENANCE, INSPECTIONS AND CHECKS, REPAIRS

One to regulate maintenance of the elevator increases to the duration and the emergency of operation. Every two years periodic verification from part of an Italian Organism of certification, designated from the owner must however be carried out one

For the operations of maintenance of the platform a copy of the module of the verifications brought back in the paragraph must be used " Module of the periodic verifications " of the user manual

The operations of maintenance of the platform must be executed from authorised staff and be brought back in the paragraph " Registry of the maintenance " on the installation handbook. In necessity case, to contact the constructor.

### 11.1 - Periodic maintenance

The advised cadences of periodic maintenance, that they must be executed from characterised staff, are of continuation brought back.

GROUP GIVES TO CONTROL	FREQUENCY CONTROL	OPERATIONS GIVE TO EXECUTE
Complete machine	3 months	To verify the general state of usury
Safety Micro	3 months	To verify the correct operation
Electric panel	3 months	To verify the correct operation
Hydraulic piston and piping	You see specific documentation attached.	
Hydraulic power pack	You see specific documentation attached.	
Electric Motor	You see specific documentation attached.	

## 10. CONTROL OF CORRECT INSTALLATION AND LINKED DOCUMENTS

After the complete installation second how much previewed from the present document the fitter must:

- to verify the correct installation of the platform using the module of conformity to the plan in attached. If the control does not give positive outcome not to start the platform and to inform the MORIS. To only start the platform after positive outcome of the held test account of the ulterior dispositions of circular law ministry in merit on the controls
- to compile the documentation all the relative documentation to the platform likes of indicated continuation and putting into effect the relative distribution of the case.

Title document	Number of copy compiled by fitter	Original to the customer that must conserve it linked to the present manual	COPY		Note
			Fitter	MORIS	
<b>1. Declaration CE of relative conformity to system</b>	3	YES	YES	YES	/
<b>2. Nameplate of identification of system</b>	3	YES	YES	YES	/
<b>3. Manual customer for the corrected use of the elevator platform for disable</b>	1	YES	NO	NO	/
<b>4. Module of control, certifications, declarations and reports</b>					
	First	YES	NO	NO	/
Module of periodic verification of the Oral platform of test of the system	2	NO	YES	YES	/
Report of taken observation and in delivery of the system	To define every time with MORIS				
Attestation of mark	To define every time with MORIS				
<b>5. Attached of which to the manual customer</b>					
Outline power pack to unifilar	2	YES	YES	NO	/
Outline hydraulic	2	YES	YES	NO	/
Outline complete Design	2	YES	YES	NO	/
Certified of type CE	1	YES	NO	NO	/
Characteristic examination and / or design and / or declarations hydraulic piston and pipages	2	YES	YES	NO	/

**ELEVATOR PLATFORM FOR DISABLE**

- This is the user manual of construction according to attachment V of directive 89/392/CEE and following modifications -  
 - do not destroy - do not alter - integrate only with added pages - compilation date 13.06.00 -

Title document	Number of copy compiled by fitter	Original to the customer that must conserve it linked to the present manual	COPY		Note
			Fitter	MORIS	
Characteristics and/or design and/or declarations hydraulic power pack	2	YES	YES	NO	/
Manual Electric motor for the installation and the maintenance of the fitter after assembly	2	YES	YES	NO	/
Manual for the installation and the maintenance of the fitter after assembly	2	YES	YES	NO	/
<b>6. Attached of which to the present document</b>					
Designs of assembly	1	NO	YES	NO	/
Module of conformity to the plan in attached	2	NO	YES	YES	1

**NOTE:**

1. To deliver the platform only if there is the formal Moris's consensus.

## 11. ATTACHED TABLES

### Platform on independent rammer

Drawing	Title	EDIZ.	YES/NO
894/BAS 1	Layout about sequence of mounting	01/99	
894/BAS 2	Layout about mounting	01/99	
894/BAS 3	Layout about mounting	01/99	
894/BAS 4	Layout about mounting	01/99	
0894 – 01	General view	01/99	
0894 – 02	Structural view – rammer	01/99	
0894 – 02 – 1	Details about linking base	01/99	
0894 – 02 – 2	Details about mounting linking	01/99	
0894 – 03	Views about rope – arcade and guide	01/99	
0894 – 03 – 1	Details links about guides arcade / cylinder	01/99	
0894 – 03 – 2	Details about links connected guide rope	01/99	
0894 – 04	Structural view about the arcade	01/99	
0894 – 04 – 1	Details about structural links	01/99	
0894 – 05	Layout ropes	01/99	
0894 – 06	Platform and cabin walls – side guide	01/99	
0894 – 07	General view with mounting hat	01/99	
0894 – 07 – 1	Details lateral doors and around the door	01/99	
0894 – 08	Layout electric power pack / piston	01/99	
0894 – 09	Layout electric cable	01/99	

**ELEVATOR PLATFORM FOR DISABLE**

- This is the user manual of construction according to attachment V of directive 89/392/CEE and following modifications -  
 - do not destroy - do not alter - integrate only with added pages - compilation date 13.06.00 -

**Completion of the installation on structure in masonry / armed concrete.**

<b>Drawing</b>	<b>Title</b>	<b>EDIZ.</b>	<b>YES/NO</b>
0894 – 10	General view (in wall)	01/99	
0894 – 11	View of the tower in wall and / or armed concrete	01/99	
0894 – 12	View of rope, arcade and guide (wall and /or armed concrete)	01/99	
0894 – 12 – 1	Details about links of guide – arcade (armed concrete)	01/99	
0894 – 12 – 2	Details about links of guide and rope (wall and /or armed concrete)	01/99	
0894 – 12 – 3	Details about guide and arcade (wall)	01/99	
0894 – 13	Details about door anchorage (wall armed concrete)	01/99	

Designs and Outlines Power pack are in attached to the material. Hydraulic outlines you see delivered material.

**Drawings and electric layout**

There are enclosed to the material

**Hydraulic layout**

Look the given material

**ELEVATOR PLATFORM FOR DISABLE**

- This is the user manual of construction according to attachment V of directive 89/392/CEE and following modifications -  
 - do not destroy - do not alter - integrate only with added pages - compilation date 13.06.00 -

## Conformity module about the mounting of the project

TO VERIFY THE FOLLOWING INFORMATION AFTER THE MOUNTING – TO SEND THIS MODULE TO MORIS FOR THE CONTROL – TO DELIVER THE PLATFORM ONLY AFTER THE WRITTEN CONSENSUS OF MORIS

Voltage F.M. _____ V; Light _____ V		
<b>SAFETY APPARATUS</b>	<b>DISTANZE NEL VANO</b>	
<ul style="list-style-type: none"> <li>- Block apparatus</li> <li>- Apparatus of Parachute</li> <li>- Doors of plan</li> <li>- Extra inferior race</li> </ul>	Cabin in extra-run in the top _____ mm	Cabin door – room max _____ mm
	Cabin threshold - max level _____ mm	Distance between the anchorage _____ mm

### ISOLATION IN ohm

	Earth	Alarm	Signal	Light of cabin	Motor	Manoeuvre
Manoeuvre						
Motor						
Light of cabin						
Signals						
Alarm						

P.S.: The isolation between motor and earth must be over 500.000 ohm, all the others must be over 250.000 ohm.

### MECHANICAL TESTS

- Intervention block doors
- Intervention parachute cabin
- Slackening chains
- Max. Speed \_\_\_\_\_ m/sec

### ELECTRICAL TESTS

- Operation alarm
- Intervention differential
  - F.M.
  - Light
- Efficiency earth system
- Manoeuvre of emergency cabin

### CIRCUITS OF EMERGENCY

- STOP Push – button of arrest of cabin
- FC Extra run
- PRC Parachute
- CPE External doors
- CBP Block of doors

### PLATES, TRUSTS AND VERIFICATIONS

- |   |  |
|---|--|
| <ul style="list-style-type: none"> <li>-Plate " Manoeuvre by hand "</li> <li>-Trust " Danger - machinery: the access to the authorised persons is prohibited ""</li> <li>- Trust " Danger - valve of lowering of emergency "</li> <li>- Trust " To only extinguish when the elevator is found more low to the level "</li> <li>- Trust " Not to extinguish the main switch: to arrange the device of blocking in position corrected before approaching the below part of the footrest ""</li> <li>- Verification that the telephone power pack is installed in a premises closed with only concurred access the authorised persons</li> </ul> | <ul style="list-style-type: none"> <li>- Plate of capacity</li> <li>- Plate " Alarm of the P.E. "</li> <li>- Outlines emergency circuits</li> <li>- Plate " not walking Surface"</li> <li>- Plate " Prohibited the income to the persons not authorised "</li> </ul> |
|---|--|

**NOTE – RELIEFS ON THE FUNCTIONALITY OF THE EQUIPMENT – IF YOU HAVE SOME DOUT, PLEASE, CONTACT MORIS**

---



---



---



---



---

**THE TESTER / INSPECTOR** \_\_\_\_\_

Moris consensus at the delivering of the platform:

**MORIS** \_\_\_\_\_



## ELEVATOR PLATFORM FOR DISABLE

- This is the user manual of construction according to attachment V of directive 89/392/CEE and following modifications -  
- do not destroy - do not alter - integrate only with added pages - compilation date 13.06.00 -

---

**MORIS**  
italia  
s.r.l.

Machine  
Hydraulic  
Reducer  
Special  
Systems

Via Mazzini, 14 - 21023 MALGESSO (VA) - ITALIA  
Tel. (0332) 78 70 11 - Fax (0332) 70 64 37

**MORIS**  
italia  
s.r.l.

Machine  
Hydraulic  
Reducer  
Special  
Systems

Via Mazzini, 14 - 21023 MALGESSO (VA) - ITALIA  
Tel. (0332) 78 70 11 - Fax (0332) 70 64 37

# **ELEVATOR PLATFORMS FOR DISABLES**

## **DOCUMENTATION OF THE PLATFORM**

-

## **MANUAL CUSTOMER INSTRUCTIONS FOR THE USE**



**Such document constitutes part of the technical issue previewed from the directive yards furnish in case the platform has been realised under such condition. (work with genius part)**

### **WARNING**

**Before using the machine to read with attention the manual present. To hold deposited the manual present in pressed of the computer room and the electric panel control**

**ELEVATOR PLATFORM FOR DISABLES**

- this is the user manual of construction according to attachment V of directive 89/392/CEE and following modifications -  
- do not destroy - do not alter - integrate only with added pages - compilation date rev. 13.06.00

*Dear Customer,*

*In thanking you for having chosen a Moris italia product we have the pleasure of presenting you this user manual with the aim of allowing you to use our product more successfully in your work.*

*We invite you to carefully read the recommendations carried in the following pages and to make the manual available to personnel occupied with management and maintenance.*

*Moris italia is at your service for all possible clarifications that you may need as much in the initial phases of machine use as later.*

*Whenever ordinary and extraordinary maintenance operations are necessary, Moris Italia will make available its own personnel in order to offer you assistance and any spare parts necessary.*

*Moris Italia*

## USER'S MANUAL INDEX

This manual regards the machine, which corresponds to Invoice No.

It is made up of the following documents:

1. **CE** statement of conformity in respect of the machine.
2. Identification nameplate of the machine.
3. Comprehensive user manual relative to the elevator platform for disables
4. Module of control, certifications, declarations and reports
  - < >. Module of periodic verification of the platform
  - < >. Report of test of the system
  - < >. Report of observation and taken in delivery of the system
  - < >. Attestation of mark.
5. Attached
  - < >. Layout of electrical power pack to unifilar (to see the manual of installation).
  - < >. Layout hydraulic (to see the manual of installation).
  - < >. Total design (to see the manual of installation).
  - < >. Certified of examination type CE
  - < >. Characteristic and / or design and / or declarations hydraulic piston and pipages
  
  - < >. Characteristic and / or design and / or declarations hydraulic telephone power pack
  - < >. Characteristic and / or declarations Manual Electric motor
  - < >. Manual for the installation and the maintenance of the fitter after the assembly

Note: This documentation regards exclusively the delivery carried out by us and is delivered in a single copy. Please use it with the subsequent warnings:

- Before using the machine read with attention the present document.
- Keep in secure place.
- Do not destroy.
- Do not alter.

If necessary contact the manufacturing company.



## CE STATEMENT OF CONFORMITY TYPE A

The company **Moris Italia s.r.l.**, with the head office in Via Mazzini, 14, Malgesso (VA),  
as Manufacturer of that indicated below:

**Model:** \_\_\_\_\_

**Type:** \_\_\_\_\_

**Number:** \_\_\_\_\_

### THE MACHINE CONFORMS TO THE:

- Directive Machines 89/392/CEE and following modifications and completions: 91/368/CEE, 93/44/CEE and 93/68/CEE incorporate with the 24 D.P.R. of July 1996 n. 459.
- Low directive Tension 73/23/CEE and following modifications and completions: 93/68/CEE incorporate from Law 18 October 1997 n. 791.
- Directive Electromagnetic Compatibility 89/336/CEE and following modifications and completions: 93/31/CEE incorporate with D.L. 4 Decembers 1992 n. 476.
- Norma ISO 9386-1 Elevator Platforms for persons with reduced mobility.
- Explanatory circular of 14 April 1997 n°157296, for the application of the presidential decree 24 July 1996, n°459, to the freight elevators and the elevator platforms for disables.
- Directive Medical Apparatus 93/42/CEE incorporate with D. Lgs. n. 46/97.

#### Certificate of examination CE of type

Certification n° \_\_\_\_\_ of \_\_\_\_\_

Given by ITALCERT - notified organism n°0426

It is made present moreover that:

- such system does not have to be put in service:
  - before that the system power pack of the stable one in which will be installed has been declared in compliance with the dispositions of Norma CEI 64/8 and Law 46 of the 05.03.1990 and following modifications and completions.
  - It has not been put into effect how much demanded the circular of 14 April 1997 n° 15 72 96.
- The technical pamphlet is available to the competent authority

The Responsible

Malgesso, \_\_\_\_\_

\_\_\_\_\_

## NAMEPLATE OF IDENTIFICATION OF THE MACHINE

<b>MORIS</b>		Macchine Oleodinamiche Riduttori Impianti Speciali
italia s.r.l.		
VIA MAZZINI, 14 - MALGESSO - VA - ITALY - TEL. 0332 / 78 70 11 - FAX 0332 / 70 64 37		
PORTATA PERSONE	UNA PERSONA CON MOBILITA' RIDOTTA PIU' UN ACCOMPAGNATORE	
PORTATA		Kg
<b>AVVERTENZE: in caso di mancanza di alimentazione elettrica:</b>		
1. è presente un dispositivo per la discesa al piano prossimo inferiore che si attiva automaticamente		
2. in caso di non funzionamento di quest'ultimo azionare il pulsante giallo		

NAMEPLATES  
PLACED TO THE  
INSIDE OF THE  
PLATFORM

<b>MORIS</b>		Macchine Oleodinamiche Riduttori Impianti Speciali	<b>CE</b>
italia s.r.l.			
VIA MAZZINI, 14 - MALGESSO - VA - ITALY TEL. 0332 / 78 70 11 - FAX 0332 / 70 64 37			
MODELLO			
TIPO			
MATRICOLA			
ANNO DI COSTRUZIONE			

NAMEPLATES  
PLACED IN PRESSED  
OF ELECTRIC PANEL  
CONTROL

PORTATA PERSONE	UNA PERSONA CON MOBILITA' RIDOTTA PIU' UN ACCOMPAGNATORE		
PORTATA	Kg	POTENZA	KW
N° PORTE		N° PIANI	
DIMENSIONI UTILI CABINA		cm	
CORSA UTILE		mt	
TENSIONE ALIMENTAZIONE		V	
ALIMENTAZIONE QUADRO ELETTRICO		V	
PRESSIONE IMPIANTO IDRAULICO		bar	

# MORIS

## ELEVATOR PLATFORM FOR DISABLES

- this is the user manual of construction according to attachment V of directive 89/392/CEE and following modifications -  
- do not destroy - do not alter - integrate only with added pages - compilation date rev. 13.06.00

Pag 6/23

### INDEX:

a.	Characteristics of the machine	p. 07
b.	Card of technical data	p. 08
c.	Definition of the terms used	p. 08
01.	Packing	p. 09
02.	Storage	p. 09
03.	Transport and movement	p. 09
04.	Assemblage, mounting, dismantling and remounting	p. 09
05.	Installation	p. 09
06.	Putting into service. Testing, command and running	p. 09
07.	Starting	p. 09
08.	Normal use and particular functioning (foreseen and reasonable predictable). Incorrect and unforeseen use. Malfunction, fault, damage. Individual machine protection.	p. 10
09.	Cleaning and spare parts	p. 11
10.	Setting and calibration	p. 11
11.	Maintenance, inspections and checks, reparation	p. 11
12.	Dismantling - putting out of service	p. 12
13.	Demolition, decontamination, differentiated subdivision of materials and disposal	p. 12
14.	Instructions for emergency situations	p. 13
15.	Maintenance registre	p. 14
16.	Annotations	p. 16

## a. CHARACTERISTICS OF THE MACHINE

### Description of machine

The elevator platforms, described in this handbook, are constructed to art rule in order to allow the overcoming of an uneven to the persons with reduced or prevented mobility. Such elevator platforms are concurred in via alternative to lift in the participation of adaptation or in order exceeding contained differences of quota in the private buildings in construction or restructure, let alone in the external spaces whose plans have been introduced after the 11 day August 1989. Said platforms they are constituted from a mobile structure, bringing the cargo platform that it slides on two fixed guides on a wall of a closed space that can be constructed in whichever resistant material and must guarantee the protection of the system from the atmospheric agents.

The elevator platforms for disables are composed substantially by:

- Hydraulic piston.
- Hydraulic power pack.
- Electric panel control.
- Cabin lacking in doors.
- Doors to the plans.
- Guides and eventually rammer.

The elevator platforms for disables are equipped of:

- Apparatus parachute that timely blocks the platform on the guides in the case verified the slackening or the breach also of one single rope.
- Device of emergency against the fast reduction of the cabin.
- Device of electromechanical control of emergency of the doors against the opening of the doors in cabin absence.
- Device of alarm in cabin.
- Automatic or manual device for the reduction of emergency.
- Lamp to low tension for the lighting system of the cabin.

#### **This elevator platform is in compliance with the following dispositions of law:**

- Directive Machines 89/392/CEE and following modifications and completions: 91/368/CEE, 93/44/CEE and 93/68/CEE incorporate with the 24 D.P.R. of July 1996 n. 459.
- Low directive Tension 73/23/CEE and following modifications and completions: 93/68/CEE incorporate from Law 18 October 1997 n. 791.
- Directive Electromagnetic Compatibility 89/336/CEE and following modifications and completions: 93/31/CEE incorporate with D.L. 4 Decembers 1992 n. 476.
- Explanatory circular of 14 April 1997 n°157296, for the application of the presidential decree 24 July 1996, n°459, to the freight elevators and the elevator platforms for disables.
- Norma ISO 9386-1 elevator Platforms for people with reduced mobility.
- Directive Medical Apparatus 93/42/CEE incorporate with D. Lgs. n. 46/97.

## b. CARD OF TECHNICAL DATA OF THE PLATFORM

On the base of the type of system to which they make service, the elevator platforms come realised on measure in the within of the following dimensions and characteristics:

DESCRIPTION	VALUE
<b>Abilities persons</b>	One person with mobility reduced more a companion
<b>Capacity with cabin</b>	250 Kg
<b>Speed</b>	6 m/min
<b>Traction</b>	In ransom 2:1
<b>Stopped</b>	From 2 to 4
<b>Accesses to the cabin</b>	Until 4
<b>Useful race</b>	Until 12,70 mt.
<b>Manoeuvre</b>	Present man with emergency
<b>Feeding</b>	230 V single phase - 400 V three phase
<b>Motor power</b>	Max. 1,8 kW single phase - max. 2,2 kW three phase
<b>Dimensions of hydraulic power pack</b>	600 x 420 x 650 mm
<b>Dimensions of picture electrical worker</b>	600 x 550 x 220 mm
<b>Standard head</b>	2550 mm
<b>Dimensions of footrest</b>	To demand (cabin max 1100 x 1400 mm)
<b>Cabin</b>	Constructed in sheet as plastic, with bottom in Linoleum or rubber to bubbles, illuminated through one lamp to neon embedded in appropriate lamp on the ceiling
<b>Doors of plan</b>	To clapper to not visible, half-automatic hinges, with windows in glass, antirust paint job, apparatus mechanic of closing, shock-absorber, external big handle in aluminium

### Noise emitted by the machine

The level of continuous acoustic pressure advised A in the workplace by the operator is usually under 70db.

### Conformity system power pack

The system power pack of the machine is in compliance with norms CEI EN 60204-1 and CEI 44-5.

### Relative conformity to the Electromagnetic Compatibility

The machine is in compliance with the Directive Electromagnetic Compatibility 89/336/CEE and following integration 92/31/CEE and D.L. n°476 of the 04,12,1992.

## c. DEFINITION OF THE TERMS UTILISED

Refer to norm UNI EN 292 for definitions of the terms utilised in this manual.

## 1. PACKING

To make reference the installation handbook.

## 2. STORAGE

To make reference the installation handbook.

## 3. TRANSPORTS AND MOVEMENT

To make reference the installation handbook. In any case they must always be respected, beyond to following the prescription, the enforced norms in the installation country.

## 4. ASSEMBLAGE, MOUNTING, DISMANTLING AND REMOUNTING

To make reference the installation handbook.

## 5. INSTALLATION

To make reference the installation handbook. In any case they must always be respected, beyond to following the prescription, the enforced norms in the installation country.

## 6. PUTTING INTO SERVICE, COMMAND & RUNNING

At the moment of the first starter of the machine, to verify the correct operation of all the commandos; if in fact the connections of the motor had been inverted the commandos they will turn out altered.

### 6.1 - Description of the manual commandos

Observing the buttons of cabin can be noticed:

- Push buttons of plan (with the number of the plan indicated on the push-button).
- Push-button of alarm (yellow). Push-button of arrest cabin (to shape of red fungus).

Observing the buttons of plan they can be noticed:

- Push buttons of call.
- Present light bulb cabin to the plan.
- Push-button of I send back to the pre-chosen plan.

The push-buttons of call of the cabin and plan are of the type to constant pressure, for which it is necessary to maintain pressed the same push-button until when the cabin has not arrived to the pre-chosen plan.

## 7. STARTING UP

The starter of the machine is carried out then carrying the grip handle of the picture in position 1 and operating with the commandos like described to the previous paragraph.

## 8. NORMAL USE AND PARTICULAR FUNCTIONING (FORESEEN AND REASONABLY FORESEEABLE). ANOMALOUS AND UNFORESEEN USE. MALFUNCTION, BREAKS AND DAMAGE. INDIVIDUAL PROTECTION APPARATUS

The described elevator platforms in this handbook are used, like described to the paragraph " A ", in order to allow the overcoming of an unevenness to the persons with reduced or prevented mobility. Every other use is improper and can therefore involve of the dangers. The constructor cannot be considered responsible for eventual damages caused from improper, erroneous uses and not reasonable.

### 8.1. Things not to do

- Not to exceed the maximum number of persons from the platform
- Not to exceed the maximum capacity of the platform.
- Not to use the platform in order to transport objects.
- Not to force the opening of the door during the operation.
- Out of service not to put the installed devices of emergency from the constructor.
- To only use the platform for the concurred uses.

### 8.2. Most frequent inconveniences: causes and remedies

Premised that the greater part of the operation defects is taken place for a use not corrected of the platform, some possible not good functioning are indicated in the following table that they can verify and the provisions to take for erase them.

DISADVANTAGE	POSSIBLE CAUSES	REMEDY
Block of the elevator Platform	Door not sluice well	To verify the closing of the door
	Lack tension	To rearm general switch
	Out of order electrical worker.	To call the qualified staff for the repair.

### 8.3. Most frequent inconveniences: causes and remedies

The constructor has supplied to reduce the dangers that can be born because of a not correct use of the machine installing on it the following apparatus of protection:

- Apparatus parachute that timely blocks the platform on the guides in the case verified the slackening or the breach also of one single chain.
- Device of emergency against the fast reduction of the cabin.
- Device of electromechanical control of emergency of the doors against the opening of the doors in cabin absence.
- Device of alarm in cabin.
- Automatic/manual device for the reduction of emergency.
- Lamp to low tension for the lighting system of the cabin.

## **8.4. Description of possible dangers from the measures of safety adopted**

The not eliminable dangers from the measures of emergency adopted from the constructor can be caused solo from a use not corrected of the machine or from a lacked respect, from part of the user, the described norms of emergency in this handbook.

## **8.5 – Manoeuvre of hand descent**

In case of interruption of the feeding power pack a device for the automatic reduction to the inferior next plan of the platform is present. In case operation of this device automatic rifle is not possible to carry out the manual reduction of the platform pressing the red push-button of the manual discharge valve mail in the premises machines after to have removed tension to the system electrical worker. Lend the maximum attention to the operation since there are persons to edge of the platform. The persons to the inside of the platform can remain in contact with the external staff through the starting device life-voice pressing the appropriate push-button in cabin.

## **9. CLEANING AND CHANGING PARTS**

The relative table to the periodic maintenance is looked at. Moreover to maintain always the level of the oil to the inside of the indications of which to the little rod and only using the oil indicated in the hydraulic telephone power pack. The change of parts of the platform must be executed from authorised staff and be brought back in the paragraph " Registry of the maintenance " of the installation handbook. In necessity case, to contact the constructor.

## **10. SETTING AND CALIBRATION**

The regulation of the machine must be carried out solo from qualified staff.

## **11. MAINTENANCE, INSPECTIONS AND CHECKS, REPAIRS**

A regular maintenance of the elevator increases its duration and reduces the emergency of operation. Every two years periodic verification from part of an Italian Organism of certification, designated from the owner must however be carried out one (circular 14/04/1997 n° 15 72 96). For the operations of maintenance of the platform a copy of the module of the verifications brought back in the paragraph must be used " Module of the periodic verifications " of the installation handbook and such module to the same handbook must be enclosed. The operations of maintenance of the platform must be executed from authorised staff and be brought back in the paragraph " Registry of the maintenance " on the installation handbook. In necessity case, to contact the constructor.

## 11.1 - Periodic maintenance

The advised cadences of periodic maintenance, that they must be executed from characterised staff, are of continuation brought back.

GROUP GIVES TO CONTROL	FREQUENCY CONTROL	OPERATIONS GIVE TO EXECUTE
Complete machine	3 months	To verify the general state of usury
Safety Micro	3 months	To verify the correct operation
Electric panel	3 months	To verify the correct operation
Hydraulic piston and piping	You see specific documentation attached.	
Hydraulic power pack	You see specific documentation attached.	
Electric Motor	You see specific documentation attached.	

## 11.2 - Not ordinary intervention

They are of repair member or and those operations substitution more of the elevator that of norm only become necessary after years of good operation, and that they do not alter the characteristics of the machine. In case of substantial modifications, the constructor cannot be considered responsible for eventual dangers that could rebel.

## 11.3 – report periodic verifications

The periodic verifications over indicated and those of which to the module in attached they must be written on the same one, be signed from the executor and indicated in the index of the maintenance operations.

## 12. DISMANTLING - PUTTING OUT OF SERVICE

In case it is not decided to use more the machine, or some its part, must outside be proceeded to the dismantling and the putting service of the same one. Such operation must be carried out following the enforced norms.

## 13. DEMOLITION, DECONTAMINATION, DIFFERENTIATED SUBDIVISION OF MATERIALS AND DISPOSAL.

In case the machine, or leaves of it, has been put service outside, must be rendered its innocuous leaves susceptible to cause whichever danger. The constituent materials the machine, that subordinates to a differentiated subdivision go, is:

- steel
- plastic
- rubber
- conductors system power pack
- oil of the motor and the hydraulic circuit

All the aforesaid operations, and the final disposal, must however always are carried out respecting the enforced dispositions of law in matter.

## 14. INSTRUCTIONS FOR THE SITUATIONS OF EMERGENCY

### 14.1 - Interruption of the feeding power pack

In case of interruption of the feeding power pack it is possible to carry out the reduction of the platform as indicated to paragraph 8.5 of the manual present.

### 14.2 – Anti-fire type of means to use

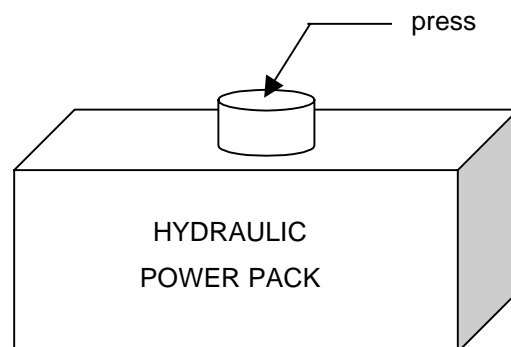
In fire case to operate following the enforced norm and how much eventually prescribed from the National Fire Departments of competence. It is better to use consistent extinguishers to powder to the enforced norm.

### 14.3 - Warnings on the possible emission of harmful substances

In fire case, some you leave of the machine (plastic and system electrical worker), burning, can emit toxic gases. To protect from such situation, making reference to the enforced norms in matter.

### 14.4 - Warnings for reduction by hand

As already said in the point the 8.5 manual reduction of the platform it goes carried out manually pressing the situated manual discharge valve in the placed hydraulic telephone power pack in pressed of the computer room. The all lend maximum attention because there are persons to edge.











# MORIS

ELEVATOR PLATFORM FOR DISABLES

- this is the user manual of construction according to attachment V of directive 89/392/CEE and following modifications -  
 - do not destroy - do not alter - integrate only with added pages - compilation date rev. 13.06.00

Pag 18/23

Module for periodic verification

<b>Date of the operation of periodic verification</b>	
<b>executed they give</b>	

EMERGENCY DEVICES	OUTCOME		INTERVENTION TO CARRY OUT
	POSITIVE	NEGATIVE	
TEST TO CARRY OUT			
- Apparatus of block			
- Parachute			
- Doors of plan			
- - Extra inferior race			

### ISOLATION IN ohM

	Earth	Alarm	Signalling	Light cabin	Motor	Manoeuvre
Manoeuvre						
Motor						
Light cabin						
Signalling						
Alarm						

P.S.: The isolation for the motor and Earth must be over 500.000 ohm, the other entire one must be over a 250.000 ohm.

MECHANICAL TESTS	OUTCOME		INTERVENTION TO CARRY OUT
	POSITIVE	NEGATIVE	
TEST TO CARRY OUT			
- Intervention block doors			
- Parachute Participation cabin			
- Slackening chains			
- max speed _____ m/sec.			

TESTS ELECTRICAL WORKERS	OUTCOME		INTERVENTION TO CARRY OUT
	POSITIVE	NEGATIVE	
TEST TO CARRY OUT			
- OPERATION ALARM			
-INTERVENTION DIFFERENTIAL			
- F.M.			
- Light			
- - Efficiency earth system			
- Manoeuvre of emergency cabin			

## CIRCUITS OF EMERGENCY

TEST TO CARRY OUT	Outcome		PARTICIPATIONS GIVE TO CARRY OUT
	POSITIVE	NEGATIVE	
- STOP (Push-button of arrest in cabin)			
- FC (Extra run)			
- PRC (Parachute)			
- CPE (External doors)			
- CBP (Block of doors)			

## PLATES, TRUSTS AND VERIFICATIONS

	PRESENT		TO RESTORE
	YES	NO	
Plate " Manoeuvre by hand "			
- Trust " Danger - machinery: the access to the authorised persons is prohibited ""			
- Trust " Danger - valve of lowering of emergency "			
- Trust " To only extinguish when the elevator is found more low to the level "			
- Trust " Not to extinguish the main switch: to arrange the device of blocking in position corrected before approaching the below part of the footrest ""			
- Plate " Alarm of the P.E. "			
- Plate " not walking Surface			
- Plate " Prohibited the income to the persons not authorised "			
- Plate of capacity			
- Layouts emergency circuits			
- Verification that the telephone power pack is installed in a premises closed with only concurred access the authorised persons			

## NOTES - RELIEFS ON THE FUNCTIONALITY OF THE EQUIPMENT

---



---



---



---



---



---



---

The verifier \_\_\_\_\_

## REPORT OF TEST OF THE SYSTEM

Machine: **ELEVATOR PLATFORM FOR DISABLES**

**Purchaser:** ZONE ASSEMBLY \_\_\_\_\_  
CUSTOMER \_\_\_\_\_  
ADDRESS \_\_\_\_\_  
CITY \_\_\_\_\_

**Producer :** **MORIS Italia s.r.l.**  
21023 MALGESSO (VA) - Via Mazzini, 14  
Tel. (0332) 78 70 11 - Fax (0332) 70 64 37

Order: \_\_\_\_\_

To closing of the jobs of assembly near:

\_\_\_\_\_

to the presence of:

- \_\_\_\_\_, that it has co-ordinated the production and the assembly of the machine
- . \_\_\_\_\_, that it has co-ordinated the installation of the machine.
- \_\_\_\_\_

It is proceeded to the final inspection that comes put into effect through the control of the points specified in the module of test brought back in the following page.

After to have therefore verified that all the found values have turned out to the inside of the values previewed from the legislation and enforced norm, and moreover that all the operations of the machine have given positive outcome, it has been passed to the subscription of the oral present with which declares that:

**THE INSTALLED MACHINE REGULARLY WORKS IN ALL ITS APPLICATIONS;  
THEREFORE THE TEST HAS GIVEN POSITIVE OUTCOME.**

The oral present comes read, approved of and underwrite from the parts.

\_\_\_\_\_, the \_\_\_\_\_.

**The fitter**

**For the Purchase**

\_\_\_\_\_

\_\_\_\_\_

## REPORT OF TAKEN ASCERTAINMENT AND IN DELIVERY OF THE MACHINERY

Machine: **ELEVATOR PLATFORM FOR DISABLES**

**Purchaser:** ZONE ASSEMBLY \_\_\_\_\_  
CUSTOMER \_\_\_\_\_  
ADDRESS \_\_\_\_\_  
CITY \_\_\_\_\_

**Producer:** **MORIS Italia s.r.l.**  
21023 MALGESSO (VA) - Via Mazzini, 14  
Tel. (0332) 78 70 11 - Fax (0332) 70 64 37

Order: \_\_\_\_\_

With the presence of the following gentlemen:

- \_\_\_\_\_, that it has co-ordinated the production and the assembly of the machine
- . \_\_\_\_\_, that it has co-ordinated the installation of the machine
- \_\_\_\_\_
- They state that the machine is consistent to the order and has been realised following the enforced norm.
- They take action that has been given a practical demonstration to the purchaser approximately the operation of the elevator platform for disables and that it they have been supplied exhausting instructions on its use sure.
- They take action that the machine comes taken in delivery from the Purchase.
- \_\_\_\_\_, the \_\_\_\_\_.

**The fitter**

**For the Purchase**

\_\_\_\_\_

\_\_\_\_\_

## ATTESTATION OF MARK



Machine: **ELEVATOR PLATFORM FOR DISABLES**

**Purchaser:** ZONE ASSEMBLY \_\_\_\_\_  
CUSTOMER \_\_\_\_\_  
ADDRESS \_\_\_\_\_  
CITY \_\_\_\_\_

**Producer:** **MORIS Italia s.r.l.**  
21023 MALGESSO (VA) - Via Mazzini, 14  
Tel. (0332) 78 70 11 - Fax (0332) 70 64 37

Order: \_\_\_\_\_

With the present action one attests that the described machine over is marked with the indicated nameplate under:

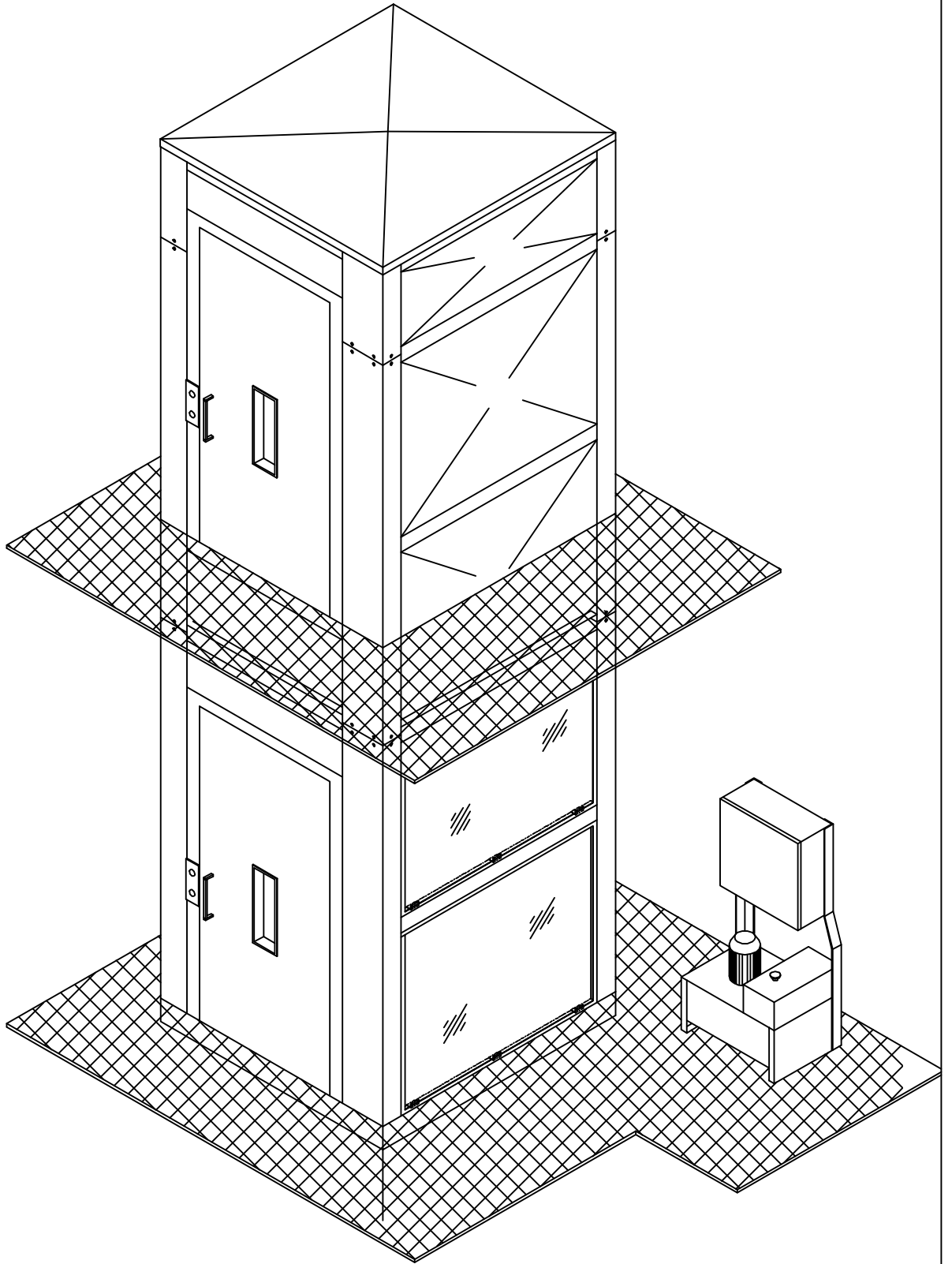
<b>MORIS</b>	Macchine Oleodinamiche Riduttori Impianti Speciali	<b>CE</b>
italia s.r.l.		
VIA MAZZINI, 14 - MALGESSO - VA - ITALY TEL. 0332 / 78 70 11 - FAX 0332 / 70 64 37		
MODELLO		
TIPO		
MATRICOLA		
ANNO DI COSTRUZIONE		

that it is located near the power pack.

The Responsible

---





UT

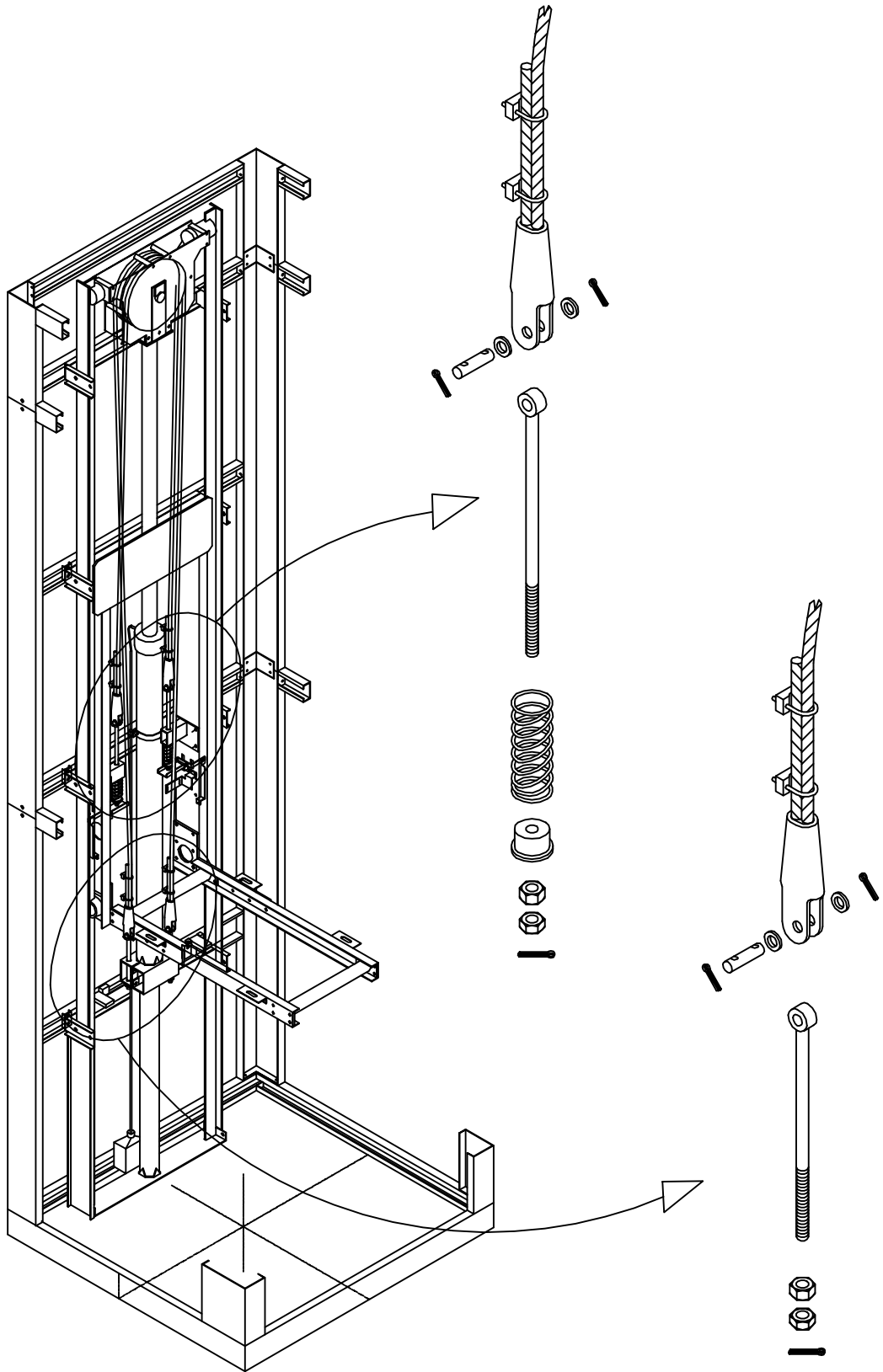
MYLIFT

DATE

07/99

DWG N.

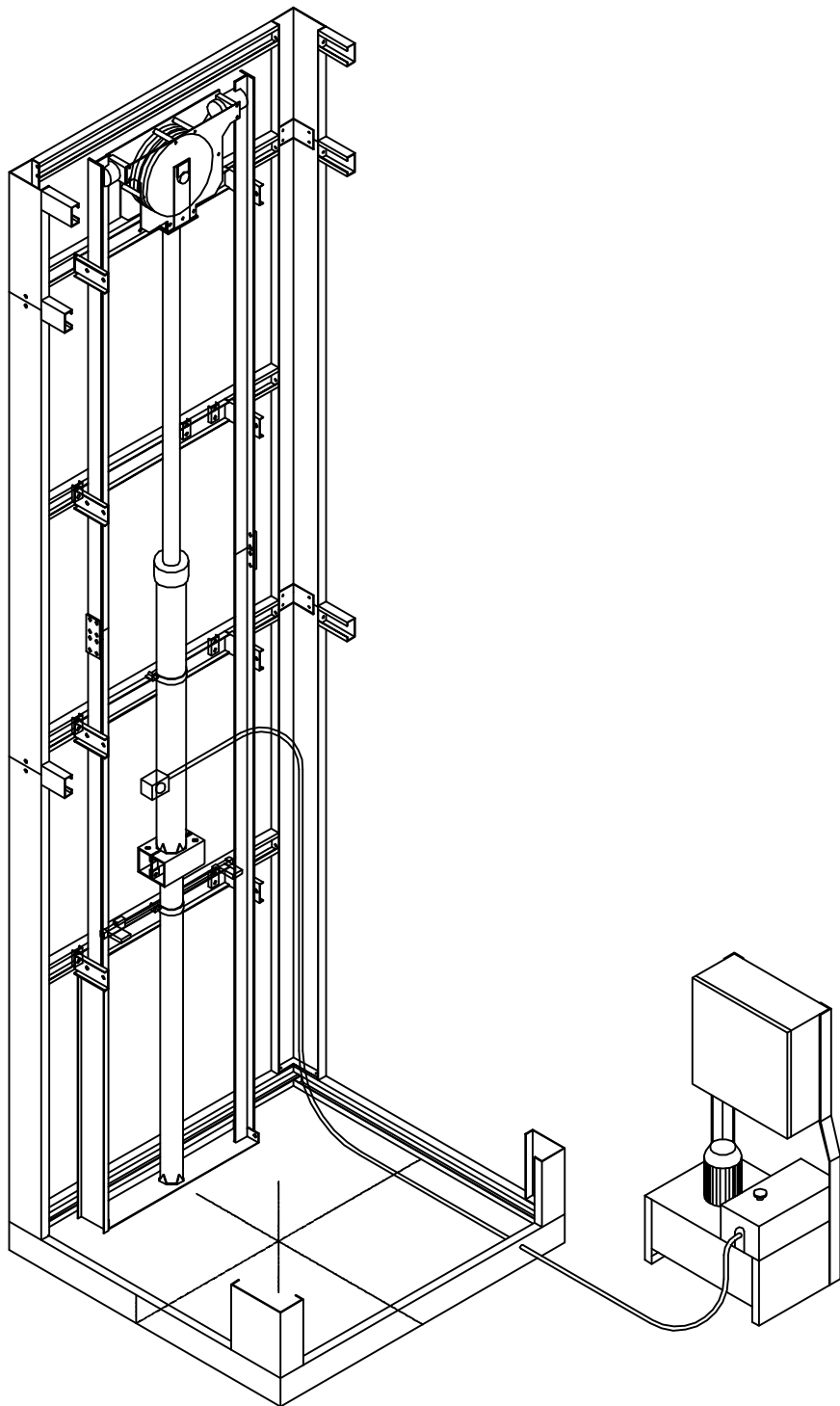
0894/01



UT	

MYLIFT

DATE	07/99
DWG N.	0894/05



UT

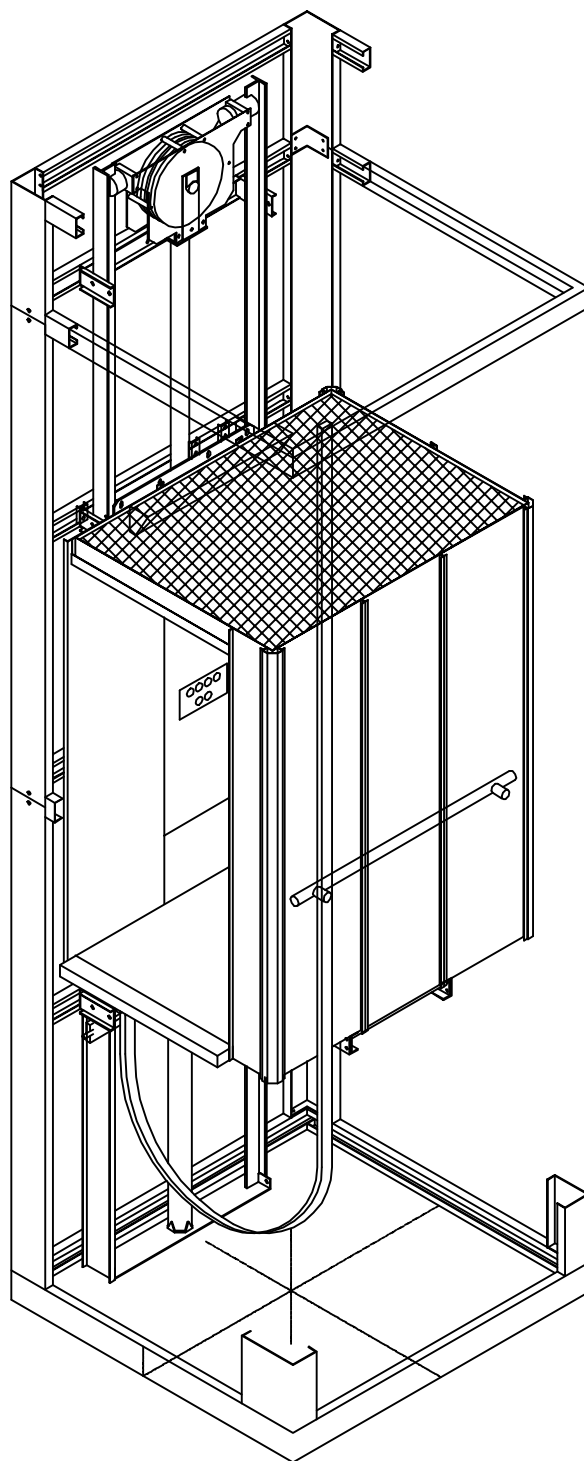
MYLIFT

DATE

07/99

DWG N.

0894/08



UT

MYLIFT

DATE 07/99

DWG N.  
0894/09