

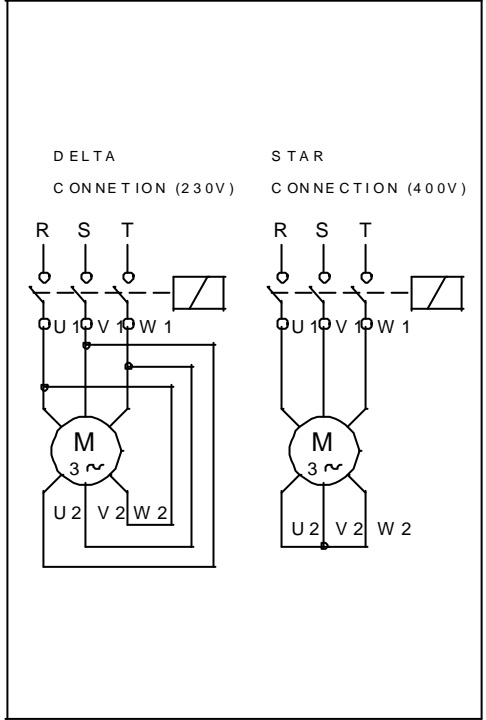
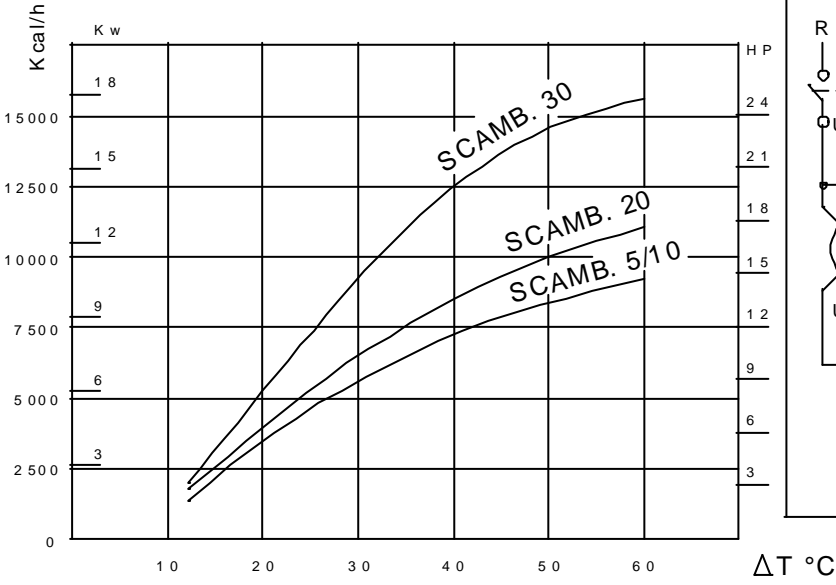
* SEE ON DWG. 9652/2

		SCAMB 5/10 (25)	SCAMB 20 (35)	SCAMB 30 (45)
ABSORBED POWER	HP	0.75	0.75	0.75
PUMPFLOW	lt/1'	3.0	3.0	3.0
AIR FLOW	mc/h	5.40	9.50	2.050
NOISE LEVEL AT 1m DISTANCE	MIN	6.7	7.1	7.5
	MAX	6.9	7.3	7.8
WEIGHT	Kg	3.5	4.0	5.0

TIPO	A	B	C	D	E	F	G	H
S C A M B 5/10	3.76	4.65	3.60	4.25	2.95	1.80	4.05	2.80
S C A M B 20	4.40	4.75	4.20	4.87	3.54	2.10	4.67	2.90
S C A M B 30	5.34	4.85	5.15	5.82	4.50	2.57	5.62	3.00

PERFORMANCE DIAGRAM

EFFICIENCY DIAGRAMS SHOW THE QUANTITY OF HEAT DISPERSED IN Kcal/h, AS FUNCTION OF THE OIL INGOING TEMPERATURE AND ROOM TEMPERATURE.



UT			DATE	09/03
HEAT EXCHANGER			DWG N.	9652/1

- IMPORTANT NOTES

- CHECK IF FEEDING VOLTAGE AND FREQUENCY ARE THE SAME AS INDICATED ON DATA PLATE,
(230/400V-50Hz-THREE-PHASE)
- BY SETTING AT WORK IT IS NECESSARY TO CHECK IF THE PUMP MOTOR WITH FAN HAS A CLOCKWISE ROTATION, AS INDICATED OF THE ARROW.
(SEE * ON DWG Nr. 9652/1)
- MORIS STANDARD:
EXCHANGER POSITIONING, ENTRANCE (b) WITH RESPECT TO THE APPARATUS,
EXIT (a), SEE DIAGRAM.
SERIES TUBES ARE 3 METER LONG.
(UP TO 7 mt MAX AS OPTION)
- - IN CASE OF OPERATING CONDITIONS OTHER THAN MORIS, USE A PUMP OUTSIDE THE EXCHANGER (OPTION).
WE SUGGEST THAT YOU CONTACT MORIS.
- TO START THE PUMP IT IS NECESSARY TO INSERT IN THE MAIN SWITCH-BOARD AN APPROPRIATE SOLENOID STARTER.

- CALCULATION

$$\text{Kcal/h} = 30 \times 60 \times 0.87 \times 0.5 \times \Delta T \text{ } ^\circ\text{C OIL}$$

$$\Delta T \text{ } ^\circ\text{C} = \frac{\text{Kcal/h}}{30 \times 60 \times 0.87 \times 0.5}$$

30 = PUMP FLOW RATE L/1'

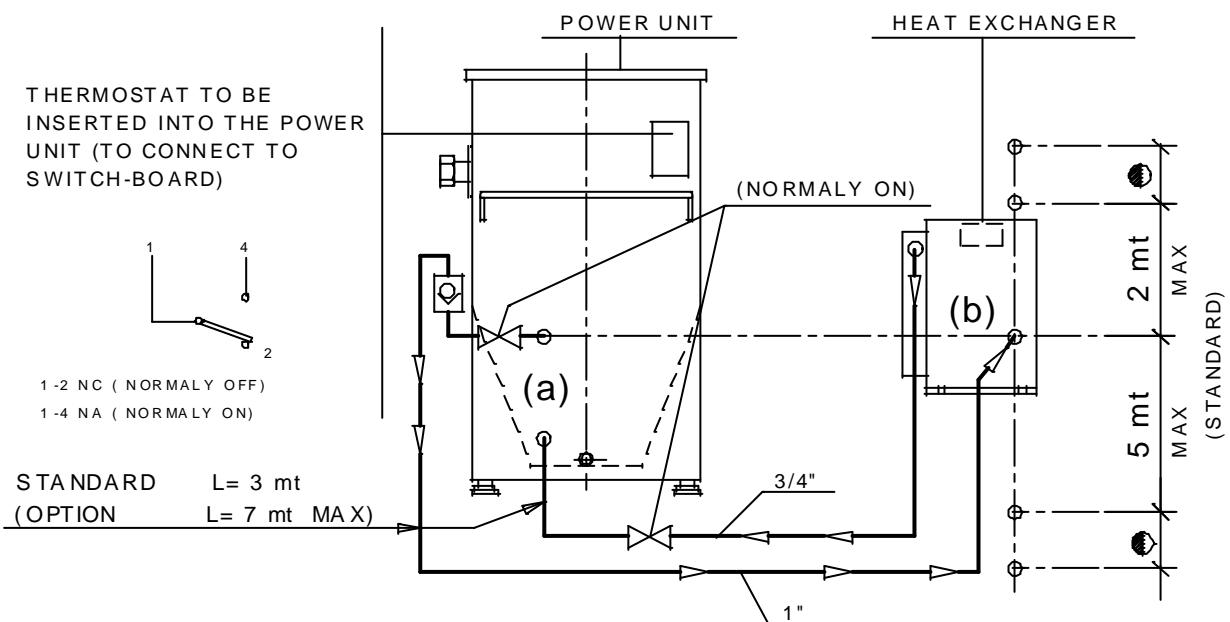
0.87 = OIL SPECIFIC GRAVITY (Kg/dm³)

0.5 = SPECIFIC HEAT [Kcal/(Kg \times $^\circ$ C)]

$\Delta T \text{ } ^\circ\text{C}$ = DELTA $^\circ$ t OIL BETWEEN POWER UNIT AND ROOM TEMPERATURE

60 = TRANSFORMATION FROM L/1' TO L/h

1HP = 632 Kcal/h 1kw = 860 Kcal/h 1Kw = 1.36HP



UT

HEAT EXCHANGER

DATE

09/03

DWG N.

9652/2